

SERVICE INFORMATION NO. SI 42-108

NOTE: SI's are used only:
1) To distribute information from DAI to our customers.
2) To distribute applicable information/documents from our suppliers to our customers with additional information.
Typically there is no revision service for SI's. Each new information or change of that will be sent along with a new SI.

I. TECHNICAL DETAILS

1.1 Airplanes affected:

All DA 42 and DA 42 M aircraft

1.2 Subject:

GARMIN Software Service Bulletin No. 0849 Revision C
ATA-Code: 34-00

1.3 Reason:

This GARMIN Software Service Bulletin provides instructions for the GARMIN G1000 System Software upgrade to version 0370.21.
In the GARMIN Software Service Bulletin No. 0849 Revision C the System Software Version has been changed to 0370.21.

1.4 Information:

For detailed technical information refer to the GARMIN Software Service Bulletin No. 0849, Revision C which is applicable without any further additions or restrictions.

II. OTHERS

The GARMIN Software Service Bulletin No. 0849 Revision C is attached to this SI.

In case of doubt contact Diamond Aircraft Industries GmbH.



SOFTWARE SERVICE BULLETIN

NO.: 0849, Revision C

TO: Diamond Aircraft, Inc.

DATE: 25 June 2009

SUBJECT: G1000 System Software Version 0370.21 Update for G1000-equipped
Diamond DA42 Aircraft

Revision C: Revised System Software Version

PURPOSE

This Software Service Bulletin provides instructions for the Garmin G1000 System Software upgrade to version 0370.21, for Diamond DA42 aircraft.

DESCRIPTION

Upgrading G1000 System Software to 0370.21 provides software enhancements including:

- Airways
- BARO-VNAV
- Garmin FliteChart (United States Only)*
- Jeppesen Chartview (optional)**
- SafeTaxi airport diagrams (United States Only)*
- MFD splash screen showing a picture of the Diamond DA42
- Addition of Endurance (END), Fuel On Board (FOB), and Fuel Over Destination (FOD) pilot selectable items in the MFD Navigation Status Box

*Requires a new obstacle/terrain data SD card (Garmin part number 010-00330-42)

**Requires a new obstacle/terrain data SD card (Garmin part number 010-00330-42), an additional unlock card, and database subscription.

© Copyright 2009
Garmin Ltd. or its subsidiaries
All Rights Reserved

Except as expressly provided herein, no part of this document may be reproduced, copied, transmitted, disseminated, downloaded or stored in any storage medium, for any purpose without the express prior written consent of Garmin. Garmin hereby grants permission to download a single copy of this document and of any revision to this document onto a hard drive or other electronic storage medium to be viewed and to print one copy of this document or of any revision hereto, provided that such electronic or printed copy of this document or revision must contain the complete text of this copyright notice and provided further that any unauthorized commercial distribution of this document or any revision hereto is strictly prohibited.

Upgrading from System Software version 0370.20 to System Software Version 0370.21 corrects the color of the airspeed pointer at the low end of the scale from red to black. Additionally, upgrading from System Software version 0370.20 to System Software Version 0370.21 allows pilot selection of the following items in any of the four fields of the MFD Navigation Status Box:

- Estimated Time of Arrival (ETA)*
- Minimum Safe Altitude (MSA)*
- Track Angle Error (TKE)*
- Vertical Speed Required (VSR)*
- Crosstrack Error (XTK)*
- Endurance (END)
- Fuel On Board (FOB)
- Fuel Over Destination (FOD)

*These items were selectable in system software versions previous to 0370.20.

NOTE

The airworthiness of System Software Version 0370.20 is not affected by this software service bulletin.

APPROVAL

The engineering data contained in this software service bulletin are FAA approved. This bulletin does not provide installation authorization.

For approved configurations refer to the Diamond Aircraft MSB 42-008, latest version.

AFMS AND PILOT'S GUIDE CONSIDERATIONS

Flight Manual documentation as required per Diamond Aircraft

The following documents describe operation of the Garmin G1000:

Garmin Part Number	Document Title
190-00406-06	G1000 Cockpit Reference Guide for the Diamond DA42
190-00649-02	G1000 Pilot's Guide for the Diamond DA42

PRODUCT AFFECTED

All Diamond DA42 aircraft equipped with a Garmin G1000 system and with system software version prior to 0370.21.

COMPLIANCE

OPTIONAL

REFERENCES

Garmin Part Number	Document Title
190-00907-00 Revision B or later	Garmin G1000 System Maintenance Manual
190-00406-06 Revision A or later	Garmin G1000 Cockpit Reference Guide for the DA42

The above referenced documents are available from www.garmin.com, within the Dealer section of the website.

MANPOWER

This Software Service Bulletin requires a maximum of one (1.0) hour labor including testing and return-to-service.

WARRANTY INFORMATION

This modification is not warranty reimbursable.

MODIFICATION INSTRUCTIONS

1. INTRODUCTION

1.1. Scope

These instructions present field upgrade procedures for G1000-equipped Diamond Model DA42 aircraft. These instructions must be followed step-by-step in order and completely, to upgrade an existing approved configuration of the system software to a newer approved configuration.

It is assumed that the person performing the upgrade is familiar with the aircraft and has a working knowledge of typical avionics systems.

NOTE

Instructions contained in this document are written specifically for upgrades to existing G1000 installations in Diamond Model DA42 aircraft.

- To identify what G1000 System Software version is installed, do the steps that follow:
 1. In the aircraft, turn the aircraft MASTER switch on.
 2. Look at the MFD power-up screen (see following figure). In the upper right corner, the display shows 'Diamond DA42 System XXXX.XX' .



3. This 'System' number is the System Software Version. It correlates to the G1000 SW Loader Card used to load the software to the system. For example:

EXAMPLE:

System Software Version '**0370.13**' = Loader Card P/N 010-00**370-13**

If the System Software Version is already at 0370.21, this Software Service Bulletin may have already been performed, proceed to the Testing Procedure section of this bulletin.

1.2. Required Materials and Equipment:

NOTE

Make sure that all of the required materials and equipment are on hand before you begin the upgrade procedure.

CAUTION

While performing this procedure ensure the aircraft is connected to and drawing power from a power cart. A loss of power during this procedure may result in a defective GIA.

- ❑ A ground power unit capable of supplying 28 VDC power to the aircraft systems and avionics
- ❑ Valid GPS Satellite signal sufficient to obtain a 3-dimensional GPS position (fix)
- ❑ G1000, DA42 Software Loader Card, P/N 010-00370-21
- ❑ GIA 6X SW Boot Block Loader Card, v4.01, P/N 010-00533-00 (Only required if Garmin Service Bulletin 0836 has **not** been complied with.)

2. G1000 Software Upgrade Procedure

NOTE

All G1000 screen shots used in this document are intended to provide visual reference only. All information depicted in screen shots, including software file names, versions and part numbers, is subject to change and may not be up to date. Please refer to the table in Section 5 Testing Procedure section of this document to verify the software part number and version for each LRU.

2.1. Boot Block Updates

2.1.1. Loading GIA Boot Block Version 4.01

Before beginning the system software update procedure, the GIA 63 Boot Block Software must be updated. Boot block version 4.01 is required for GIA Main Software Version 4.00 or later.

NOTE

If Garmin Software Service Bulletin 0836 has been complied with, proceed to Section 2.1.2 of this bulletin.

1. Ensure the G1000 is powered off.
2. Insert the GIA 63 boot block version 4.01 loader card into the top slot of the MFD.
3. While holding the ENT key on the MFD, restore power to the MFD.
4. When the words **INITIALIZING SYSTEM** appear in the upper left corner of the MFD, release the ENT key.
5. Repeat steps 3 and 4 for the PFD.
6. Use the FMS knob to turn to the Software Upload page on the PFD.
7. Verify 'GIA 6X Boot Block 4.01' appears in the File List.
8. Verify 'GIA 1' and 'GIA 2' appears in the LRU window.
9. Press the FMS knob to highlight 'GIA 6X Boot Block 4.01'.
10. Press the LOAD softkey.
11. Press the ENT key at the "BEGIN FILE UPLOAD?" prompt.

CAUTION

Do not turn power off or cancel the software upload while the boot block is loading.

12. Confirm update completion and press the ENT key.

13. On the MFD use the FMS knob to turn to the System Status page.
14. Highlight 'GIA 1'.
15. Verify 'G1000 GIA 6X SYS' is being reported in the description field.
16. Power down the G1000.
17. Remove the GIA 63 boot block version 4.01 loader card from the PFD.
18. Continue to Section 2.1.2.

2.1.2. Loading GDU Boot Block Version 2.03

Before beginning the system software update procedure, the GDU Boot Block Software must be updated.

1. Ensure the G1000 is powered off.
2. Insert the GDU boot block version 2.03 loader card into the top slot of the MFD.

NOTE

The GDU boot block loader image (006-B0874-00) is available to download from the dealer portion of the Garmin website (www.garmin.com). **The GDU boot block loader image contained on the G1000 Software Loader Card (010-00370-21) is not to be used.**

3. While holding the 2nd (from the left) softkey, restore power to the MFD.
4. Follow the onscreen prompts to update the GDU Boot Block Software.

```
INITIALIZING SYSTEM
DO YOU WANT TO UPDATE THE BOOT BLOCK FROM 2.02 TO 2.03?
NO WILL BE ASSUMED IN 28 SECONDS.
```

NOTE

If the GDU Boot Block is already 2.03 select "NO" to cancel the upload.

5. Repeat Steps 1 through 4 on the PFD.

2.2. MFD and PFD Software Load

1. Turn on the ground power unit, if used.
2. Turn on the Electric Master Switch.
3. Turn on the AVIONICS MASTER switch. At this moment, all G1000 equipment is receiving power.
4. Disengage the MFD and PFD circuit breakers.
5. Insert the correct G1000 Loader Card into the MFD top card slot (located on the MFD).
6. While holding the ENT key on the MFD, engage the MFD circuit breaker.
7. When the words **INITIALIZING SYSTEM** appear in the upper left corner of the MFD, release the ENT key.
8. Press the ENT key to acknowledge the following prompt (NOTE: A softkey labeled 'YES' appears in the lower right corner and may be used instead of the ENT key):

```
DO YOU WANT TO UPDATE SYSTEM FILES?  
PRESS CLR FOR NO AND ENT FOR YES  
YOU HAVE 30 SECONDS BEFORE NO IS RETURNED
```

9. The following screen is displayed.

```
DO YOU WANT TO UPDATE SYSTEM FILES?  
PRESS CLR FOR NO AND ENT FOR YES  
YOU HAVE 30 SECONDS BEFORE NO IS RETURNED  
UPDATING SYSTEM FILES. DO NOT TURN OFF POWER !!!  
THIS MAY TAKE UP TO 10 MINUTES
```

10. New software is loaded to the MFD. When complete, the MFD starts in configuration mode.
11. Remove the G1000 Loader Card from the MFD and insert it into the top card slot on the PFD.
12. While holding the ENT key on the PFD, engage the PFD circuit breaker.
13. When the words **INITIALIZING SYSTEM** appear in the upper left corner of the PFD, release the ENT key.
14. Press the ENT key to acknowledge the following prompt (NOTE: A softkey labeled 'YES' appears in the lower right corner and may be used in lieu of the ENT key):

```
DO YOU WANT TO UPDATE SYSTEM FILES?  
PRESS CLR FOR NO AND ENT FOR YES  
YOU HAVE 30 SECONDS BEFORE NO IS RETURNED
```

15. The following screen is displayed.

```
DO YOU WANT TO UPDATE SYSTEM FILES?  
PRESS CLR FOR NO AND ENT FOR YES  
YOU HAVE 30 SECONDS BEFORE NO IS RETURNED  
UPDATING SYSTEM FILES. DO NOT TURN OFF POWER !!!  
THIS MAY TAKE UP TO 10 MINUTES
```

16. New software is loaded to the PFD.
17. When PFD update is complete, it starts in the configuration mode. Do not remove power, proceed to Section 2.3.

NOTE

For the rest of the software/configuration procedure, do not operate the MFD while loading software or configuration files unless specifically instructed to do so. A failed or cancelled load may result.

2.3. Initial G1000 Software and Configuration Upload

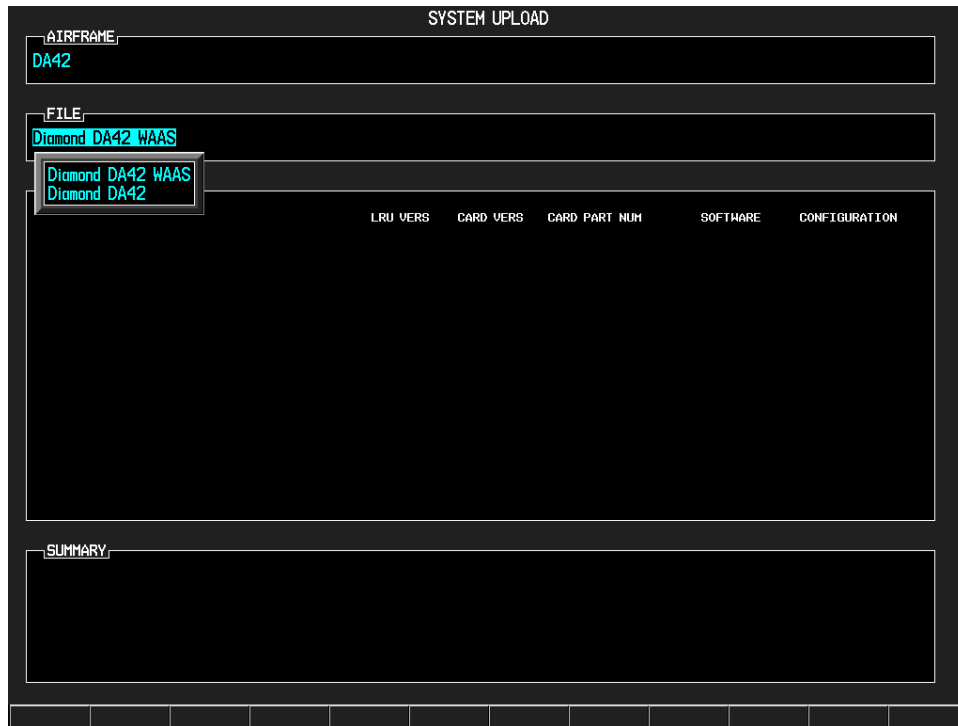
1. Go to the SYSTEM UPLOAD page using the FMS knob.
2. Activate the cursor and highlight the AIRFRAME field.
3. Using the FMS knob select DA42.



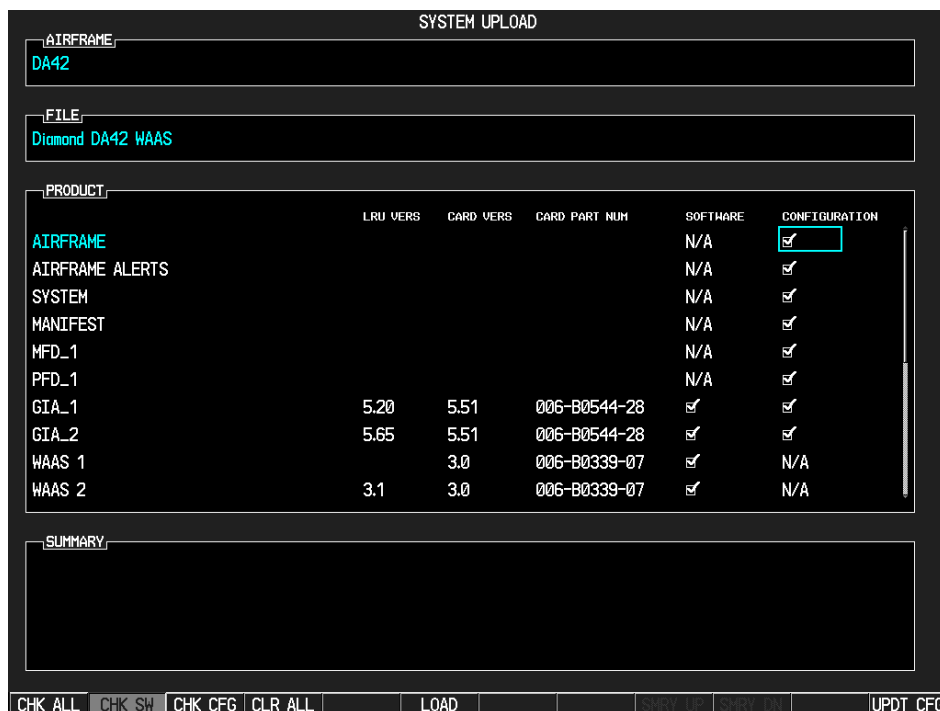
4. Press the ENT key.
5. Using the FMS knob select Diamond DA42 WAAS or Diamond DA42 in the FILE field, depending on your current system.

CAUTION

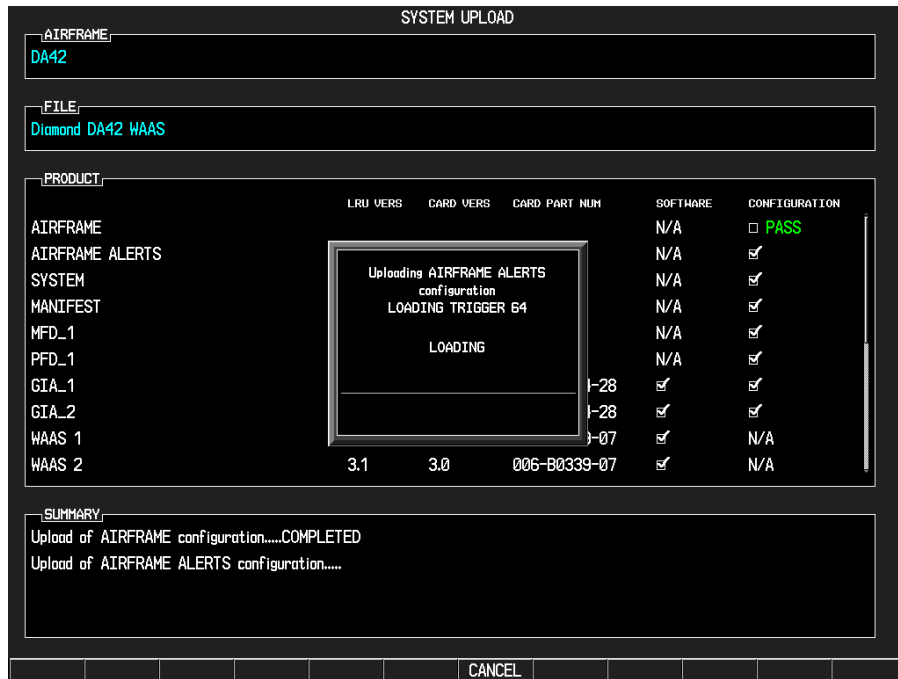
Loading non-WAAS software in a WAAS-equipped G1000 system, or loading WAAS software in a non-WAAS-equipped G1000 system, may result in a damaged GIA.



6. Once the correct file has been selected, press the ENT key.
7. Press the CHK ALL softkey.
8. Press the LOAD softkey to begin the software and configuration loading process.



9. Monitor the status of the upload process.



10. Once all files have been successfully loaded, press the ENT key to acknowledge the Upload Complete prompt.



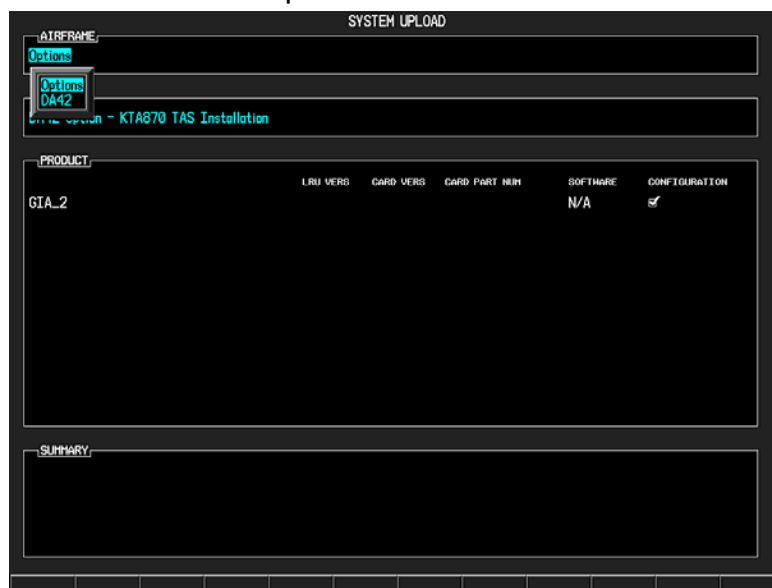
2.4. Optional Equipment

If the Diamond DA42 is equipped with any of the following optional equipment, perform the procedure below to load software and configuration files. If the DA42 is not equipped with any of the following options, proceed to Section 3 of this bulletin. For approved configurations refer to the Diamond Aircraft MSB 42-008, latest revision.

- DA42 Option – 1.7 Liter Engine
- DA42 Option – Weather Radar (NO GDL69)
- DA42 Option – Weather Radar
- DA42 Option – Stormscope
- DA42 Option – TAS600 Series Installation
- DA42 Option – Rudder Trim
- DA42 Option – KTA870 TAS Installation
- DA42 Option – GFC 700
- DA42 Option – GDL69
- DA42 Option – DME
- DA42 Option – Deicing
- DA42 Option – Aux Fuel Tanks
- DA42 Option – ADF

2.4.1. Loading Optional Equipment Software and Configuration Files

1. Go to the SYSTEM UPLOAD page using the FMS knob.
2. Activate the cursor and highlight the AIRFRAME field.
3. Using the FMS knob select Options.



4. Press the ENT key.
5. Using the FMS knob select the appropriate option and press the ENT key.



6. Press the CHK ALL softkey.
7. Press the LOAD softkey, to begin the software and configuration loading process.
8. Press the ENT key to acknowledge the Upload Complete prompt.



9. View the SUMMARY field and ensure that all items are "COMPLETED".
10. Repeat steps 5 through 8 to load any other equipped options. Once all software and configuration files have been loaded, proceed to Section 3 of this bulletin.

2.5. SafeTaxi, FliteChart, and/or Jeppesen ChartView

If the SafeTaxi, FliteChart, or Jeppesen ChartView features are utilized, remove the existing obstacle/terrain data SD (010-00330-41) cards from the bottom slot of both PFD and MFD units and discard. Replace with the new obstacle/terrain SD (010-00330-42) cards.

CAUTION

Do not insert the new obstacle/terrain data SD (010-00330-42) cards into the bottom slot of both the PFD and MFD until all software and configuration files have been loaded and all displays have been powered up in normal mode at least one time subsequent to loading software. Failure to do so may result in obstacles not displaying correctly.

2.5.1. Jeppesen ChartView Unlock

1. Remove power from the PFD and MFD.
2. Insert the Jeppesen ChartView Unlock Card (010-00330-50) in the upper slot of the PFD.

NOTE

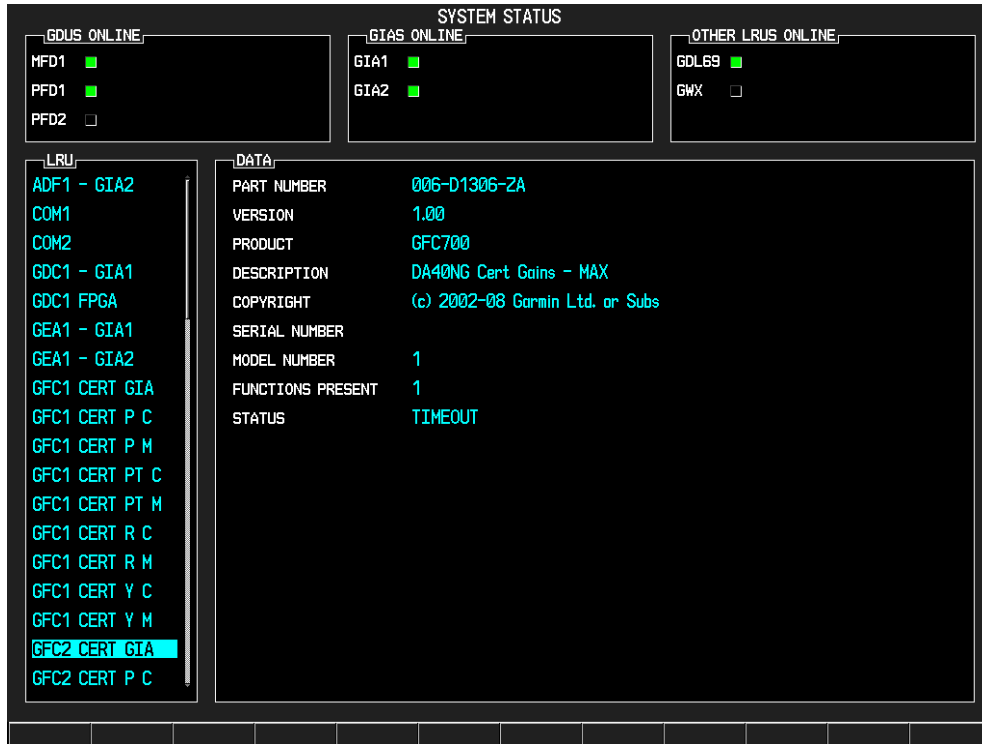
When the ChartView option is enabled for the first time, the G1000 writes its unique system ID to the physical card and locks the files to this unique ID. This prevents the unlock card from ever being used to activate the ChartView feature in other G1000 systems. The unlock card is forever tied to the specific aircraft in which it was used for the first time. For situations where ChartView must be re-activated, this card must be used.

3. While holding the ENT key on the PFD and MFD, restore power to both displays.
4. When the words **INITIALIZING SYSTEM** appear in the upper left corner of the displays, release the ENT key.
5. On the PFD, go to the System Upload page using the FMS knob.
6. Activate the cursor and use the FMS knob to select CONFIGURATION FILES in the AIRFRAME field and press the ENT key.
7. Highlight the FILE field and use the FMS knob to select the "Enable ChartView" option and press the ENT key. Once the option is selected the configuration files in the PRODUCT field will be displayed. All files should be checked. If not, press the CHK ALL softkey.

8. Press the LOAD softkey.
9. Monitor the status of the upload. When the upload is finished, press the ENT key to acknowledge the upload complete confirmation.
10. View the SUMMARY field and ensure the item is "COMPLETE".
11. Deactivate the cursor.
12. Remove the ChartView Unlock Card from the PFD.

3. TESTING PROCEDURE

3.1. Software Load Confirmation



1. Go to the System Status page using the small FMS knob. Activate the cursor and toggle to the LRU window.
2. In the LRU window, highlight each of the items listed in the following table and verify that the software part number and version displayed on the System Status page matches those listed in the table.

DA42 G1000 System Software Version 0370.20 (WAAS-Equipped)

LRU	SOFTWARE PART NUMBER	SOFTWARE VERSION
GDC1	006-B0261-12	3.02
GDC1 FPGA	006-C0055-00	1.05
GEA1	006-B0193-05	2.07
GFC CERT (GIA1, GIA2, P C, P M, PT C, PT M, R C, R M, Y C, Y M)	006-D0744-02	2.00
GIA1	006-B0544-28	5.51
GIA1 AUDIO	006-D0425-03	2.03
GIA2	006-B0544-28	5.51
GIA2 AUDIO	006-D0425-03	2.03
GMA1	006-B0203-33	3.03
GMU1	006-B0224-00	2.01
GMU1 FPGA	006-C0048-00	2.00
GPS1	006-B0339-07	3.0
GPS2	006-B0339-07	3.0
GRS1	006-B0223-09	2.11
GRS1 FPGA	006-C0049-00	02.00
GS1	006-B0083-XX	4.00
GS2	006-B0083-XX	4.00
GSA (PITCH CTL, PITCH MON, PITCH TRM C, PITCH TRIM M, ROLL CTL, ROLL MON, YAW CTL, YAW MON)	006-B0398-20	2.13
GTX1	006-B0172-01	4.06
MFD1	006-B0319-6A	8.20
MFD1 FPGA	006-C0036-04	1.04
PFD1	006-B0319-6A	8.20
PFD1 FPGA	006-C0036-04	1.04

DA42 G1000 System Software Version 0370.20 (Non-WAAS)

LRU	SOFTWARE PART NUMBER	SOFTWARE VERSION
GDC1	006-B0261-12	3.02
GDC1 FPGA	006-C0055-00	1.05
GEA1	006-B0193-05	2.07
GFC CERT (GIA1, GIA2, P C, P M, PT C, PT M, R C, R M, Y C, Y M)	006-D0744-02	2.00
GIA1	006-B0190-46	5.51
GIA1 AUDIO	006-D0425-03	2.03
GIA2	006-B0190-46	5.51
GIA2 AUDIO	006-D0425-03	2.03
GMA1	006-B0203-33	3.03
GMU1	006-B0224-00	2.01
GMU1 FPGA	006-C0048-00	2.00
GPS1	006-B0093-XX	3.03
GPS2	006-B0093-XX	3.03
GRS1	006-B0223-09	2.11
GRS1 FPGA	006-C0049-00	02.00
GS1	006-B0083-XX	3.00
GS2	006-B0083-XX	3.00
GSA (PITCH CTL, PITCH MON, PITCH TRM C, PITCH TRIM M, ROLL CTL, ROLL MON, YAW CTL, YAW MON)	006-B0398-20	2.13
GTX1	006-B0172-01	4.06
MFD1	006-B0319-6A	8.20
MFD1 FPGA	006-C0036-04	1.04
PFD1	006-B0319-6A	8.20
PFD1 FPGA	006-C0036-04	1.04

NOTE

All G1000 system software versions correspond to their respective G1000 Loader Card part numbers (e.g. G1000 Software Loader Card part number 010-00370-21 contains G1000 system software version 0370.21). This number is shown on the G1000 on the start-up page of the MFD, in the upper right corner of the display.

3. De-activate the cursor.

NOTE

If any software version and/or part number does not match those specified by the table in the Additional Information section of this document, or if the software is not successfully loaded, DO NOT continue with post-installation procedures. Troubleshoot and resolve the issue (refer to the G1000 System Maintenance Manual P/N 190-00907-00) before continuing.

3.2. Software Operational Test

Remove the G1000 Loader Card from the PFD and set it aside.

The G1000 system is tested while operating in the normal mode. Restart the PFD by cycling the PFD circuit breaker to start the display in the normal mode. Cycle power to the MFD in the same manner.

1. Look at the MFD power-up screen. In the upper right corner, the display shows 'Diamond DA42 System XXXX.XX':



2. This 'System' number is the System Software Version. It correlates to the G1000 SW Loader Card used to load the software to the system:

EXAMPLE:

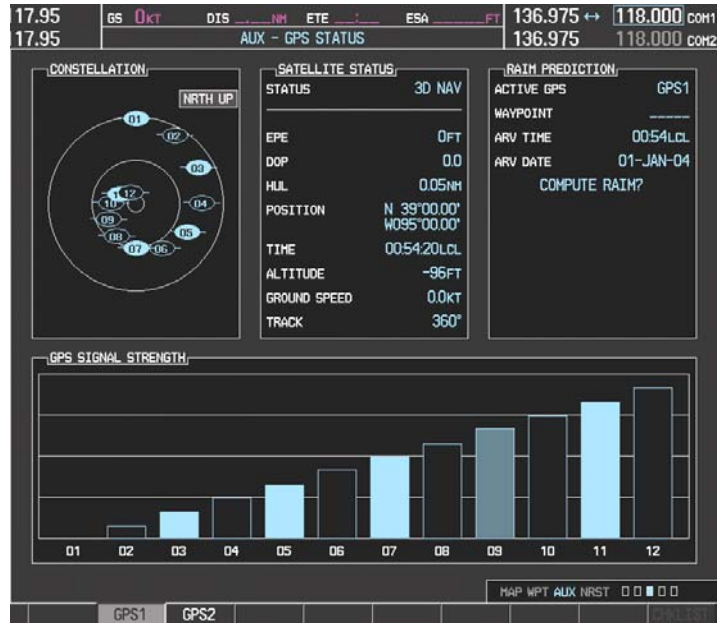
System Software Version '**0370.21**' = Loader Card P/N 010-**00370-21**

3. Verify that the System Software Version is correct.
4. Press the ENT key to acknowledge the agreement on the MFD (the rightmost softkey may also be used to acknowledge the agreement).

NOTE

In the normal operating mode, data fields that are invalid have large red X's through them. A valid field does not display a red X.

5. Allow the displays to initialize for approximately one minute. The GDC 74A and GRS 77/GMU 44 require a longer initialization period than do other LRUs. During normal operation, this causes the attitude, heading, airspeed, altitude, vertical speed, and OAT fields to be invalid during the first 40-60 seconds of PFD power-up.
6. Verify that no 'Manifest' errors appear when the ALERTS softkey is pressed.
7. Check that all COM/NAV fields are valid in the top corners of the PFD and MFD.
8. Check that attitude, heading, altitude, airspeed, vertical speed, TAS, and OAT fields are valid on the PFD.
9. Verify that there are no BACKUP PATH alerts on the PFD. If an LRU is not communicating over its primary path, the BACKUP PATH alert will identify which LRU is having the problem. Correct the problem before proceeding; refer to the G1000 System Maintenance Manual (190-00907-00) as needed.
10. Verify that engine and airframe instruments are valid on the MFD.
11. Push the red DISPLAY BACKUP button on the GMA 1347. Verify both displays enter reversion mode: both should have valid attitude, altitude, airspeed, vertical speed, and engine instruments.
12. De-activate reversion mode by pushing the DISPLAY BACKUP button again.



13. The GIA 63 units should normally acquire a 3D GPS navigation solution within 5 to 10 minutes of startup, provided the aircraft is outside (or indoors with a GPS repeater). Select the AUX – GPS STATUS Page on the MFD. Two softkeys on the bottom of the display allow the user to toggle between GPS 1 and GPS 2. Verify that both receivers show 3D Navigation on the MFD.

3.3. ADF Checkout (if applicable)

This check verifies that the ADF-to-G1000 interface operates correctly. This check is required for DA42 aircraft with the remote-mount Becker RA3502 ADF installed.

1. On the PFD, check to see if the ADF window(s) is displayed. If not, press the PFD softkey. Using either the BRG1 or BRG2 softkeys, toggle the softkey until the ADF bearing is shown. Press the BACK softkey.
2. Verify that the ADF window is not invalid (no red 'X').
3. Press the ADF/DME softkey and check to ensure the ADF tuning window displays correctly.

3.4. DME Checkout (if applicable)

This check verifies that the DME-to-G1000 interface operates correctly. This check is required for DA42 aircraft with the Honeywell remote mounted KN63 DME installed.

1. On the PFD, check to see if the DME window is displayed. If not, press the PFD softkey, then press the DME softkey to display the DME window next to the HSI.
2. Verify that the DME window is not invalid (no red 'X').
3. On the PFD, press the ADF/DME softkey. Verify that the ADF/DME TUNING screen is displayed correctly.

3.5. GDL Configuration Verification (if applicable)

This check verifies that the GDL69-to-G1000 interface operates correctly. This check is required for DA42 aircraft with the GDL 69 installed.

1. Using the small FMS knob, verify the Map – Weather Data Link page can be displayed on the MFD.



NOTE

If needed, refer to the document GDL 69/69A XM Satellite Radio Activation Instructions (190-00355-04).

3.6. Stormscope Configuration Verification (if applicable)

This check verifies that the L-3 Communications Stormscope interface operates correctly. This check is required for DA42 aircraft with the Stormscope installed.

1. Using the small FMS knob, verify the Map – Stormscope page can be displayed on the MFD.



3.7. TAS System Verification (KTA870 TAS or TAS600) if applicable

This check verifies that the KTA870 TAS-to-G1000 or TAS600-to-G1000 interface operates correctly. This check is required for DA42 aircraft with the KTA870 TAS or TAS600 installed.

1. Using the small FMS knob, verify that the upper left corner of the Map – Traffic Map page on the MFD displays “TAS OPERATING”.



3.8. GFC Autopilot Ground Checks (if applicable)

The following procedure will verify the proper operation of the GFC 700 AFCS. The technician performing these checks must be thoroughly familiar with the GFC 700 by studying the G1000 Cockpit Reference Guide for the DA42.

3.8.1. Autopilot Pre-Flight Test

NOTE

The autopilot pre-flight test will run on every full airplane power-on.

1. Open the AUTOPILOT circuit breaker and reset. The AFCS will re-initiate the pre-flight test.

NOTE

A red 'AFCS' (AFCS) annunciation will be displayed until both GIAs, the AHRS, and the autopilot servos are online. The red 'AFCS' annunciation will then be replaced by a white 'PFT' annunciation.

2. Verify that a white 'PFT' annunciation is displayed on the PFD, as shown in the following figure.



3. Upon successful completion of the pre-flight test, an aural alert will sound and the 'PFT' annunciation will clear. Continue to Step 3.8.2.

NOTE

If the 'PFT' annunciation turns red, the test has failed and additional troubleshooting will have to be performed prior to continuing with the test.

4. If the aural alert is not heard, but pre-flight testing passed, engage the Autopilot by pressing the AP key on the MFD and disengage the Autopilot by pressing the AP key again. Visual and aural disconnect alerting should occur. If no alert is heard, the audio interface between GIA No. 1 and the audio panel should be checked. If an alert is heard, the audio interface between GIA No. 2 and the audio panel should be checked.

3.8.2. AFCS Switch Checks

To verify that the AFCS system buttons and switches are operating correctly, perform the following checks:

1. Actuate the manual electric trim (MET) hat switch forward/aft on the pilot's control stick. The pitch trim should engage and the run in the selected direction. Check operation in both directions.
2. While actuating the MET switch in the pitch axis, press the A/P DISC button on the pilot's control stick and hold. The pitch trim should stop running and the pitch trim indication should stop moving. The pitch trim will not run for as long as the A/P DISC button is pressed.
3. Release the pilot's A/P DISC button. The trim should resume running. Release the MET switch.
4. While actuating the MET switch in the pitch axis, press the A/P DISC button on the copilot's control stick and hold. The pitch trim should stop running and the pitch trim indication should stop moving. The pitch trim will not run for as long as the A/P DISC button is pressed.
5. Release the copilot's A/P DISC button. The trim should resume running. Release the MET switch.
6. Engage the Autopilot by pressing the AP key on the MFD. The pitch and roll clutches should engage, resisting movement of the control stick.
7. Press and hold the CWS switch on the pilot's control stick. CWS should be annunciated on the PFD and the control stick should now move freely when moved manually.
8. Release the CWS switch. CWS should be removed from the PFD and the autopilot should hold the control stick in its present attitude.
9. Press the A/P DISC switch. The Autopilot should command a normal disengagement. A single disconnect tone will be heard and a flashing amber "AP" will be visible on the PFD for approximately five seconds.
10. Verify that the control stick is free in pitch and roll axes.

11. Engage the Autopilot.
12. Pull the AUTOPILOT circuit breaker. The Autopilot should command an abnormal disconnect, consisting of a continuous disconnect tone and flashing red 'AP'. No AFCS annunciations (e.g. AFCS, PFT, Mistrim) should remain on the PFD.
13. Press the AP key on the MFD to silence the autopilot abnormal disconnect tone and then reset the AUTOPILOT breaker.
14. Wait for the pre-flight test sequence to successfully complete again.
15. Press the Go Around button on the LH power lever. 'GA' should be annunciated on the PFD for both pitch and roll modes and the command bars should indicate a wings-level climb to 4 degrees.
16. Press the FD key on the MFD twice to deactivate the Go Around mode and reset the Flight Director. Green 'PIT' and 'ROL' annunciations will be visible on the PFD.
17. Center the pitch trim.
18. Engage the Autopilot.
19. Press the CWS button and verify there is no residual force on the control stick for the pitch axis.
20. Disengage the Autopilot by pressing the A/P DISC switch.

3.8.3. Autopilot Operation Checks

1. Push the HDG knob in to synchronize the heading bug to the present aircraft heading on the HSI.
2. Engage the Autopilot.
3. Select Heading mode by pressing the HDG key on the MFD. The command bars should be level and the control stick should be stationary (very slow movement acceptable, due to the aircraft not being perfectly level).
4. Turn the HDG knob to the left and verify that the command bars move to the left and the control stick moves to the left.
5. Turn the HDG knob to the right and verify that the command bars move to the right and the control stick moves to the right.
6. Push the HDG knob in to synchronize the heading bug to the present aircraft heading on the HSI
7. Push the CWS button and pull the control stick to the middle of the pitch control range.
8. Release the CWS button. Verify that the Autopilot clutches re-engage and hold the wheel stationary.
9. Holding the control stick lightly, press the NOSE UP key on the MFD twice, to increase the pitch reference. Verify that the command bars move up approximately one degree and the control stick begins moving aft.

10. Hold the control stick and press the CWS button, re-synchronizing the pitch reference and re-centering the control stick.
11. Release the CWS button and verify that servo clutches re-engage before releasing the control stick.
12. Press the NOSE DN key on the MFD twice. Verify that the command bars command down and the control stick begins moving forward.
13. Hold the controls and press CWS to re-center the command bars and stop control stick movement.
14. With the Autopilot still engaged and the CWS button pressed, move the control stick to its aft limit.
15. Release the CWS button and apply continuous forward pressure, slowly moving the control stick. After 1 or 2 seconds, the trim should begin moving in a trim up direction.
16. Grip the control stick and press the CWS button. Trim motion should stop.
17. Move the control stick to the forward limit and release the CWS button.
18. Slowly pull back on the control stick. After a similar delay, the trim should begin to trim down.
19. Relieve pressure on the control stick and the trim motion should stop.
20. Hold the control stick and press the A/P DISC switch to disconnect the Autopilot.
21. Engage VS mode by pressing the VS key on the MFD. Verify the PFD displays 'VS' in green and indicates a pitch reference of '0 FPM'.

NOTE

An altitude must be selected prior to pressing the FLC key.

22. Press the FLC key on the MFD and verify that 'FLC' is annunciated on the PFD in green with a reference of 90 KTS (NOTE: This is the minimum speed reference for this airplane).
23. Press the ALT key on the MFD and verify that the 'ALT' annunciation is displayed in green on the PFD with an altitude reference equal to the aircraft altitude.
24. Press the FD key and verify that the mode annunciations and command bars are removed from the display.

3.9. Deicing System Verification (if applicable)

This check verifies that the Deicing system interfaces operate correctly. This check is required for DA42 aircraft with the Deicing option installed.

1. For aircraft with the Deicing system installed, verify that the lower left corner of the System Display on the PFD displays "DEICE FLUID".



3.10. Final Checks

Before returning the aircraft to service:

- Make appropriate entry in the aircraft's maintenance records, noting that the instructions in this Software Service Bulletin have been performed
- Record the G1000, DA42 Loader Card part number in the maintenance records
- Make sure that any required documentation is delivered to the aircraft owner/operator

End of Testing Procedure

Successful completion of the preceding Testing Procedure section of this bulletin is adequate to ensure proper load and configuration of the new software covered by this bulletin. This test procedure is intended to verify the serviceability of the appliance only and does not verify or otherwise validate the airworthiness of the installation.

MATERIAL INFORMATION

GDU Boot Block Software v2.03

To accomplish this update, the technician will need a GDU Boot Block SW v2.03 Loader Image, Garmin P/N 006-B0874-00. The loader image is available for download from the Dealer portion of the Garmin website (www.garmin.com). **The GDU boot block loader image contained on the G1000 Software Loader Card (010-00370-21) is not to be used.**

GIA 6X Boot Block Software v4.01

NOTE

Only required if Garmin Service Bulletin 0836 has **not** been complied with.

To accomplish this update, the technician might need a GIA 6X Boot Block SW v4.01 Loader Card, Garmin P/N 010-00533-00 or the Boot Block SW v4.01 Loader Image, Garmin P/N 006-B0538-00. The loader image is available for download from the Dealer portion of the Garmin website (www.garmin.com). A Diamond supplied SD card containing GIA Boot Block SW v4.01 may be used as an equivalent means of obtaining the required Software Loader Image.

G1000, DA42 Software

To accomplish this update, the technician must have a G1000, DA42 Loader Card, Garmin P/N 010-00370-21 or the G1000, DA42 Software Loader Image, Garmin P/N 006-B0322-21. The loader image is available for download from the Dealer portion of the Garmin website (www.garmin.com). A Diamond supplied SD card containing G1000 System Software version 0370.21 may be used as an equivalent means of obtaining the required Software Loader Image.

QTY	Part Number	Description
1	010-00533-00	GIA 6X SW Boot Block Loader Card, v4.01
1	006-B0874-00*	GDU 1XXX Boot Block, v2.03
1	010-00370-21	G1000 Software Loader Card (Diamond DA42)
2	010-00330-42**	Supplemental Datacard
1	010-00330-50***	Jeppesen ChartView Unlock Card

* Available on the Dealer portion of the Garmin website (www.garmin.com).

** Only required if Garmin SafeTaxi, FliteCharts, or Jeppesen Chartview features are utilized.

***Only required for Jeppesen ChartView.

Software Loader Image Download Instructions

1. From the Dealer Resource portion of the Garmin website (www.garmin.com), follow the instructions to save the file to the computer. It is recommended to create a folder 'C:/Garmin' as a target directory for the file.
2. Insert a blank SD card into your PC SD card reader. If the card needs to be formatted, format it in the FAT32 format.
3. Open the saved file (from Step 1) on your PC and follow the on-screen instructions to make the desired loader card.
4. When the program is complete, remove the SD card from your PC SD card reader.

ADDITIONAL INFORMATION

NA