

OPTIONAL SERVICE BULLETIN

OSB 42-110

I TECHNICAL DETAILS

I.1 Category

Optional.

I.2 Airplanes affected

Type: DA 42 and DA42 M with TAE 125-01 or TAE 125-02-99 engines.

Serial numbers: 42.004 and subsequent
42.AC001 and subsequent
42.M001 and subsequent

I.3 Date of effectivity

01-Sep-2015

I.4 Time of Compliance

At owner's discretion.

I.5 Subject

Installation of a heating improvement – Winter Kit

I.6 Reason

Diamond Aircraft has developed a Winter Kit, to improve the cabin heating in cold weather conditions. With this Service Bulletin the Winter Kit is available for installation on airplanes in the field.

I.7 Concurrent Documents

None.

I.8 Approval

The technical information or instructions contained in this document relate to the Design Change Advisory No. OÄM 42-280, which has been approved by EASA.

The technical content of this document has been approved under the authority of DOA ref. EASA.21J.052.

I.9 Accomplishments / Instructions

See WI-OSB 42-110, latest effective issue.

I.10 Mass (Weight) and CG

No Change.

II PLANNING INFORMATION**II.1 Material and Availability**

See WI-OSB 42-110, latest effective issue.

II.2 Special Tools

None.

II.3 Labour Effort

Approx. 1 hours.

II.4 Credit

None.

II.5 Reference Documents

DA 42 Series Airplane Maintenance Manual, Doc. No. 7.02.01, latest effective issue.

III REMARKS

1. All work must be done by a certified aircraft service station or a certified aircraft maintenance mechanic.
2. All work, in particular that which is not especially described in this Service Bulletin, must be done in accordance with the referenced Maintenance Manual.
3. Completion of all work must be recorded in the log book.
4. In case of doubt contact Diamond Aircraft Industries GmbH.

**EXECUTION REPORT TO
SERVICE BULLETIN
OSB 42-110**

AIRPLANE INFORMATION

Airplane Serial Number _____

Airplane Registration _____

Airplane Operator _____

Hours of operation of airplane _____

No. of landings _____

Hours of operation-engine LH _____

RH _____

Typical operation of airplane private, club, training, other _____

Date, Name, SignPlease fax the completed form to Fax No. +43-2622-26700-1369 or e-mail to
airworthiness@diamond-air.at

WORK INSTRUCTION

WI-OSB 42-110

I GENERAL INFORMATION

I.1 Subject

Installation of a heating improvement – Winter Kit

I.2 Reference Documents

DA 42 Series Airplane Maintenance Manual, Doc. No. 7.02.01, latest effective issue.

I.3 Remarks

- a) All work must be done by a certified aircraft service station or a certified aircraft maintenance mechanic.
- b) All work, in particular that which is not especially described in this work instruction, must be done in accordance with the referenced maintenance manual.
- c) In case of doubt, contact Diamond Aircraft Industries GmbH.

II DRAWINGS, SPECIAL TOOLS & MATERIALS

II.1 Drawings

D60-2120-00-00X02

II.2 Special Tools

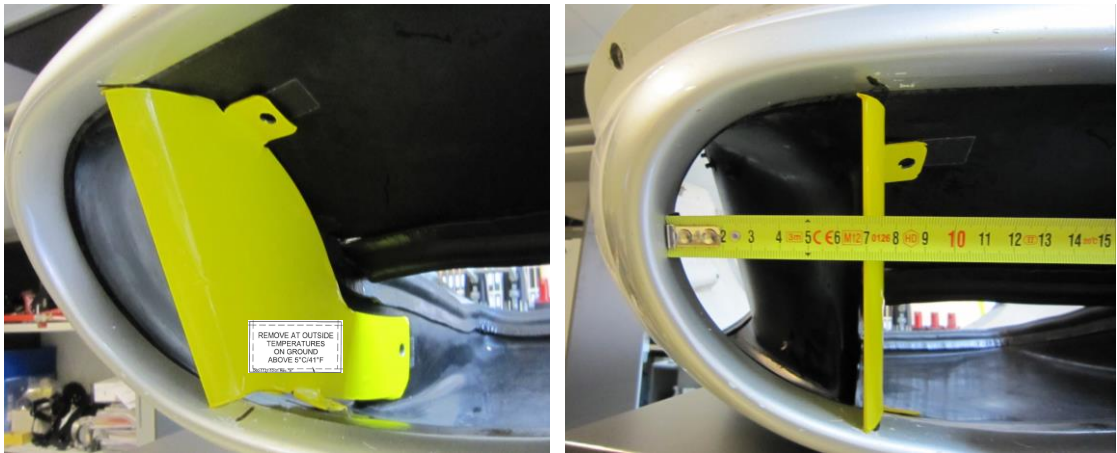
None.

II.3 Material

Quantity	Part No.	Description
1	D60-2120-11-00	Winter Kit cowling LH
1	D60-2120-12-00	Winter Kit cowling RH
2	99E10-01	camloc latches
4	V212-12-1FGV	camloc latches
8	DIN 7337-B2,4x8,5	blind rivet
6	V27W01-1AN	retaining washer
4	V27S02-5AGV	camloc with countersunk
2	V27S02-6AGV	camloc with countersunk

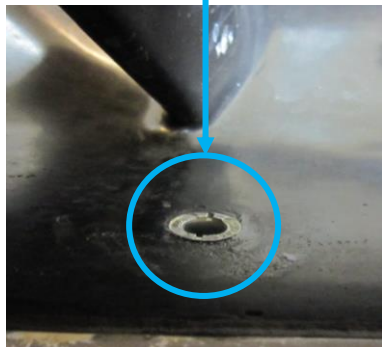
Material is available from Diamond Aircraft Industries.

III INSTRUCTIONS

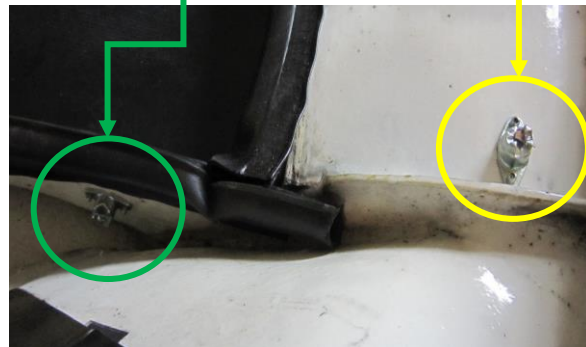
1	Remove the bottom cowlings i.a.w. AMM Section 71-10.
2	<p>Position the Winter Kit cowling LH D60-2120-11-00 and the Winter Kit cowling RH D60-2120-12-00 on the bottom cowlings i.a.w. picture below.</p> 
3	Mark the positioned sheets (refer to step above) on bottom cowlings.
4	Drill and countersink holes for the holder cams and for the rivets i.a.w. drawing D60-2120-00-00X02 (refer to picture in step 5)

Bond the camloc latches 99E10-01 with thickened resin i.a.w. AMM Chapter 51 into the bottom cowlings and rivet the 4 camloc latches V212-12-1FGV with 8 blind rivets DIN 7337-B2,4x8,5 into the bottom cowlings i.a.w. drawing D60-2120-00-00X02 (refer to picture below).


5



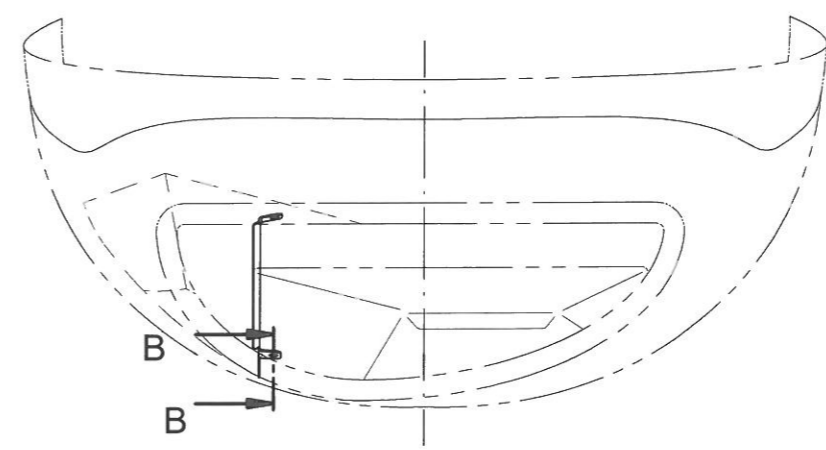
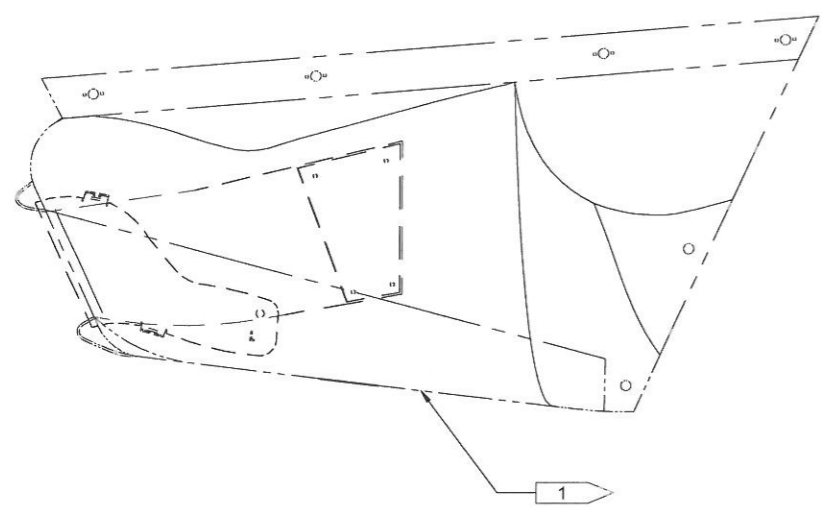
Detail 99E10-01



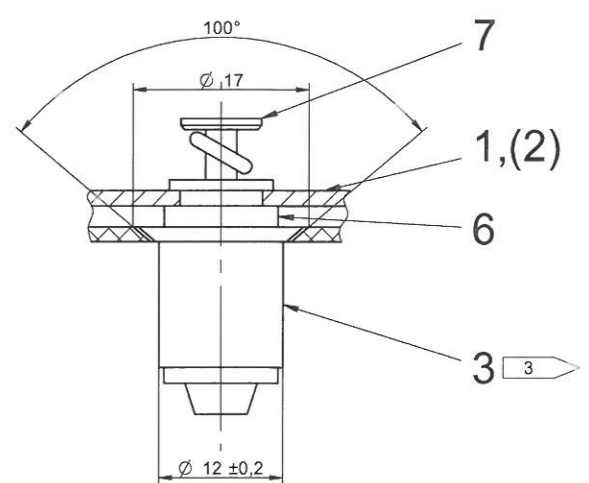
Detail V212-12-1FGV backside

6	<p>Mount the Winter Kit cowling LH and the Winter Kit cowling RH with retaining washer V27W01-1AN and with camlocs V27S02-5AGV (refer to step 5 green and yellow detail) and with camlocs V27S02-6AGV (refer to step 5 blue detail) and i.a.w. with drawing D60-2120-00-00X02 (refer to picture below).</p>  <p>Picture of RH cowling with heating improvement</p> <p>NOTE: It is required to remove the Winter Kit, when the outside air temperature exceeds 5°C!</p>
7	Install the cowlings i.a.w. AMM Section 71-10.
8	Clean working area, check for foreign objects.
9	Clean working area, check for foreign objects
10	Check all altered, replaced, repaired parts for proper function.
11	Test all systems in working area for function.
12	Insert TR-OAM-42-280 into the AFM or use a revision of the AFM in which the TR has been incorporated.
13	Insert AFM Supplement O09 into the AFM.
14	Make all necessary entries in the airplane logs.

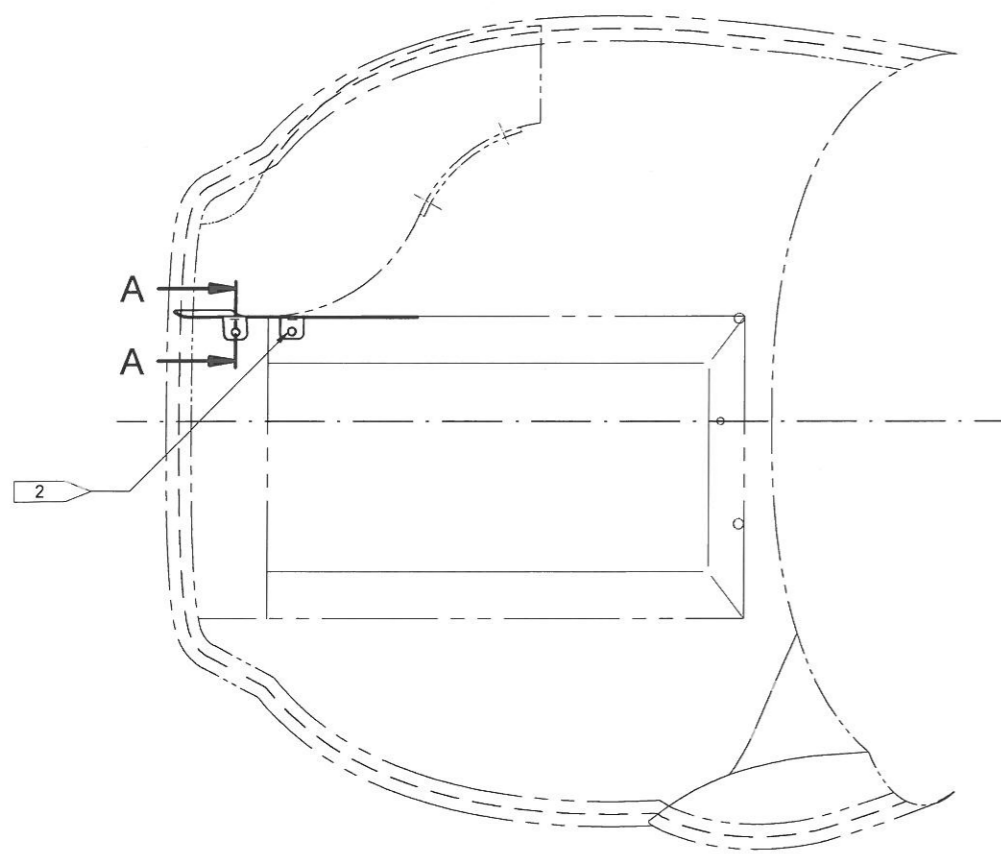
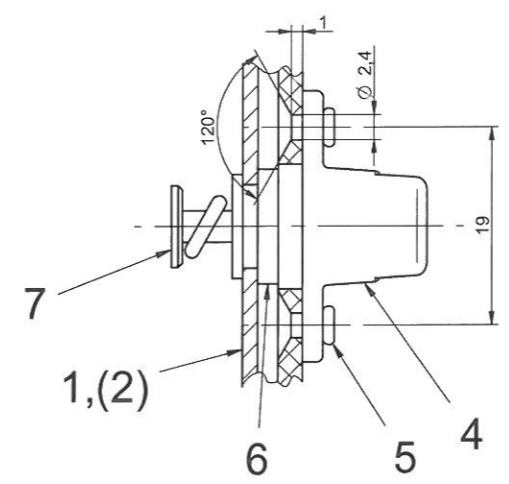
REVISION					
REV	SH	ZONE	DESCRIPTION	DATE	APPROVAL
-	01	ALL	NAD-DISTRUBED NEW DRAWING, DOES NOT SUPERSEDE ANOTHER DRAWING.	04.12.2014	SCHEIKL
A	01	ALL	OAM 42-280 IN PARTLIST ITEM 6 1 PIECE LHRH CHANGED TO 3 PIECES LHRH.	17.12.2014	SEE TB



SECTION B-B
2:1



SECTION A-A
2:1



FLAG NOTES

- 1 D60-7116-03-00 COWLING ASSY C LH AND D60-7116-07-00 COWLING ASSY C RH.
- 2 DRILLING ALL HOLES ACCORDING TO CONTOUR OF D60-2120-11-01 LH / D60-2120-12-01 RH.
- 3 PASTE IN ITEM 3 WITH THICKENED RESIN.

ITEM	QTYL	QTYR	PART NUMBER	DESCRIPTION	MATERIAL TYPE	H.T.	MATERIAL SIZE	SPECIFICATION
7	3	3	V27S02-AGV	CAMLOCK WITH COUNTERSUNK				Fa. Alcoa Fastening System
6	3	3	V27W01-1AN	HOLDER WASHER				Fa. Alcoa Fastening System
5	4	4	DIN 7337-B2,4x8,5	COUNTERSUNK BLIND RIVET				
4	2	2	V212-12-1FGV	HOLDER CAM				Fa. Alcoa Fastening System
3	1	1	99E10-01	HOLDER CAM				Fa. Alcoa Fastening System
2	-	1	D60-2120-12-00	WINTER KIT COWLING RH				
1	1	-	D60-2120-11-00	WINTER KIT COWLING LH				

DIMENSIONS METRIC FIRST ANGLE PROJECTION UNLESS OTHERWISE SPECIFIED DIMENSIONS ARE IN MM DIMENSION TOLERANCES 2 DECIMAL ±0,25 1 DECIMAL ±0,5 DECIMAL ±1 ANGLE ±1° RAD ±0,5		IDENTIFICATION MARKINGS DP-S-17-00001 CLASSIFICATION: NONE INTERCHANGEABLE PART NO THIS DRAWING WAS PRODUCED USING SOFTWARE: SOLID EDGE ST6 FILENAME D60-2120-00-00X02a.dft		Diamond Aircraft Industries N. A. Otto-Straße 5 A-2700 Wiener Neustadt	
DEPARTMENT: Schuster DRAWN: Scheikl CHECKED: Scheikl QA: N/A STRESS: N/A MANUF.: N/A SYSTEM: Volck APPROVED: Scheikl		SIGN: [Signature] DATE: 17.12.2014 PROJECT: DA 42 TITLE: WINTER KIT INSTALLATION COWLING TAE DWG. ORIG.: DAIA DWG. NO.: D60-2120-00-00X02 CODE: 710197 SCALE: 1:5 SH: 01 OF 01		FINISH IN MICROMETER APPROVED: [Signature] 2015	

ALL RIGHTS RESERVED FOR THIS DOCUMENT WHICH MAY NOT BE REPRODUCED OR TRANSMITTED IN ANY FORM OR BY ANY MEANS WITHOUT THE PRIOR WRITTEN CONSENT OF DIAMOND AIRCRAFT INDUSTRIES