

# MANDATORY SERVICE BULLETIN

## NO. MSB-42-006/1

SUPERSEDES MSB-42-005

SUPERSEDES MSB-42-006

### I TECHNICAL DETAILS

#### I.1 Category

Mandatory

#### I.2 Airplanes affected

Type: DA 42

Serial Numbers: 42.004 through 42.035, 42.037 (Action 1 & Action 2)

42.036, 42.038 through 42.064,  
42.107, 42.109, 42.110, 42.177 (Action 3)

#### I.3 Time of Compliance

Action 1  
Upon receiving of this Service Bulletin

Action 2 and 3  
During next scheduled inspection, not later than 31-Dec-2005

#### I.4 Subject

Exchange of the Safety Walk on the Wing Stubs.

Issuance of a Temporary Revision to the AFM to amend the one engine inoperative climb/decent performance data.

#### I.5 Reason

It has been found that the airplane fails to reach the one engine inoperative climb/descent data shown in the Airplane Flight Manual. In this context it has been determined, that the Safety Walk - 300 Series, color grey –coarse surface, has an adverse influence to the rate of climb – single engine operation. Replacement is necessary. In addition to that a Temporary Revision to the Airplane Flight Manual is

issued in which the one engine inoperative performance values are reduced to a conservative level.

The normal climb rate (both engines operative) is not affected.

## **I.6 Concurrent Documents**

none

## **I.7 Approval**

The technical information or instructions contained in this document relate to the Design Change Advisory No. MÄM 42-107, which has been approved under the authority of EASA Design Organization Approval No. EASA.21J.052 and MÄM 42-111/b which has been approved by EASA.

The technical content of this document has been approved und the authority of DOA No. EASA.21J.052.

## **I.8 Accomplishment/Instructions**

Action 1:

- a Check that MSB 42-005 is complied with.

Action 2:

- a Remove Safety Walk Series 300, color grey – coarse surface (surface roughness equal to sandpaper with grid 40). For replacement refer to AMM, Chapter 11-00.
- b Install new Safety Walk D60-1127-10-51 Rev. “a” or later issue (surface roughness equal or finer than sandpaper grid 100) according to drawing D60-1120-20-00SB, latest effective revision. For replacement refer to AMM, Chapter 11-00.
- c Remove AFM-TR-MÄM-42-070, page 5-18a, and AFM-TR-MÄM-42-103, page 5-18b.
- d Mark AFM page 5-18 as superseded.
- e Incorporate Temporary Revision TR-MÄM-42-111/a into the AFM.
- f MSB 42-005 becomes obsolete with compliance to MSB 42-006/1 or later.

Action 3:

- a Remove AFM-TR-MÄM-42-070, page 5-18a, and AFM-TR-MÄM-42-103, page 5-18b.
- b Mark AFM page 5-18 as superseded.
- c Incorporate Temporary Revision TR-MÄM-42-111/a into the AFM.
- d MSB 42-005 becomes obsolete with compliance to MSB 42-006/1 or later.

## **I.9 Mass (Weight) and CG**

The change in mass and CG is negligible.

## **II PLANNING INFORMATION**

### **II.1 Material & Availability**

2 x D60-1127-10-51 Rev. "a" or later issue.  
Temporary Revision TR-MÄM-42-111/a is attached to this Service Bulletin.  
D60-1120-20-00SB is attached to this Service Bulletin.

### **II.2 Special Tools**

None

### **II.3 Credit**

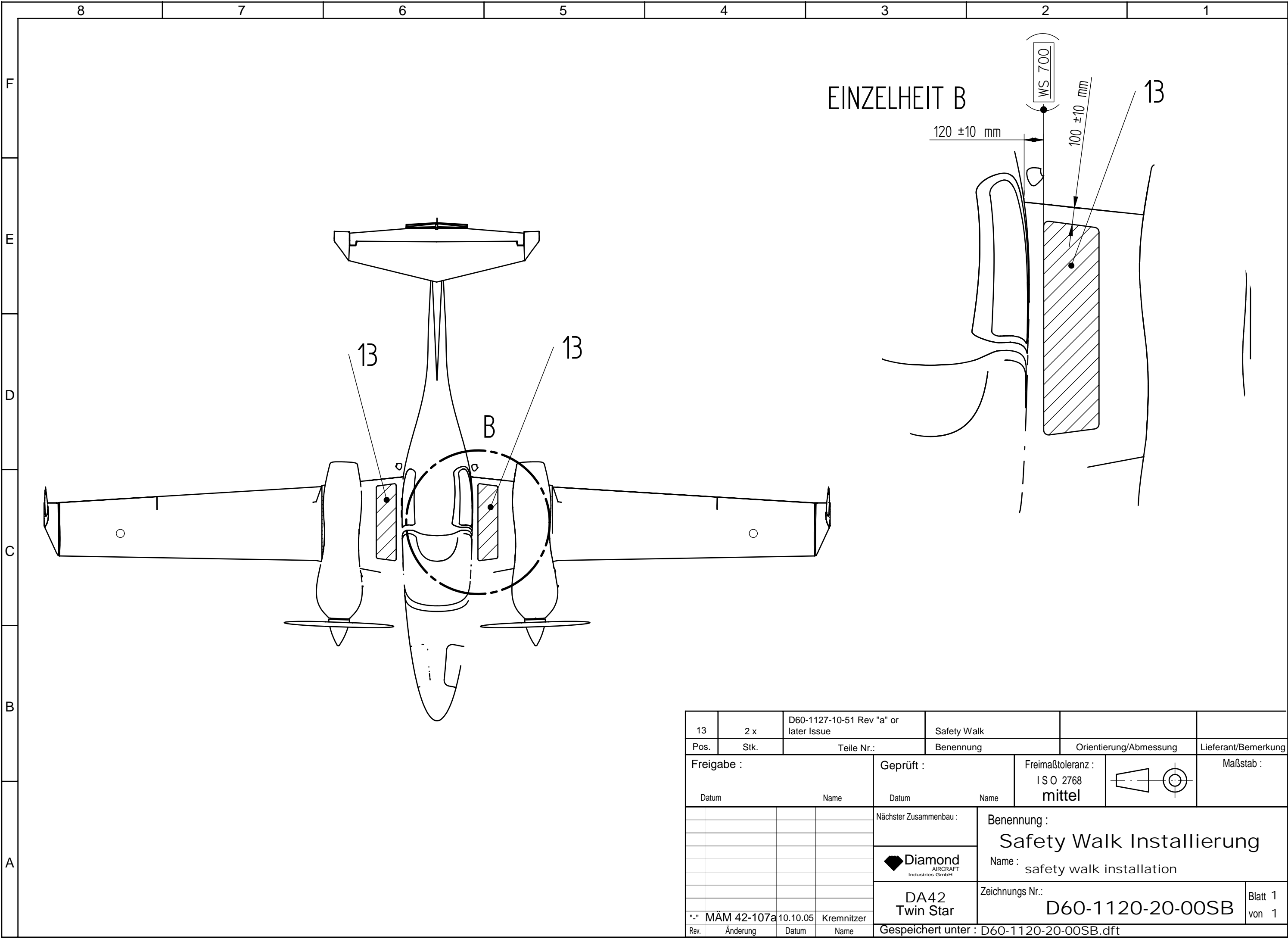
Material (Safety Walk D60-1127-10-51 Rev. "a" or later issue)  
1 man hour of work

### **II.4 Reference Documents**

DA42 Series Airplane Maintenance Manual, Doc. No. 7.02.01, always latest revision.  
TR-MÄM-42-111/a

## **III REMARKS**

1. All measures must be carried out by the manufacturer, a certified repair aircraft station or a certified aircraft mechanic
2. Accomplishment of the measures must be confirmed in the log book.
3. In case of any doubt, contact Diamond Aircraft Industries.



13		2 x		D60-1127-10-51 Rev "a" or later Issue		Safety Walk					
Pos.		Stk.		Teile Nr.:		Benennung		Orientierung/Abmessung		Lieferant/Bemerkung	
Freigabe :				Geprüft :				Freimaßtoleranz :			
Datum				Name		Datum		Name			