

TEMPORARY REVISION

AMM-TR-MÄM 42-1314

Wiring Schematic Update

This Temporary Revision AMM-TR-MÄM 42-1314 is approved in conjunction with the Mandatory Design Change Advisory MÄM 42-1314 and is valid in conjunction with the Airplane Maintenance Manual (AMM) until this Temporary Revision has been incorporated into the AMM.

The limitations and information contained herein either supplement or, in the case of conflict, override those in the AMM.

The technical information contained in this document has been approved under the authority of DOA Ref. EASA.21J.052.

Doc. No.	Section	Affected Pages
7.02.01	92-00-00	2a, 2aa

Instruction

- Print this document on yellow paper (double-sided).
- Insert this cover page as the first page of the AMM.
- Insert the other pages of this Temporary Revision adjacent to or in front of the corresponding AMM pages.

Intentionally left blank

AFFECTED CHAPTER:

CHAPTER 92
WIRING DIAGRAMS

1. General

The following items are amended to read:

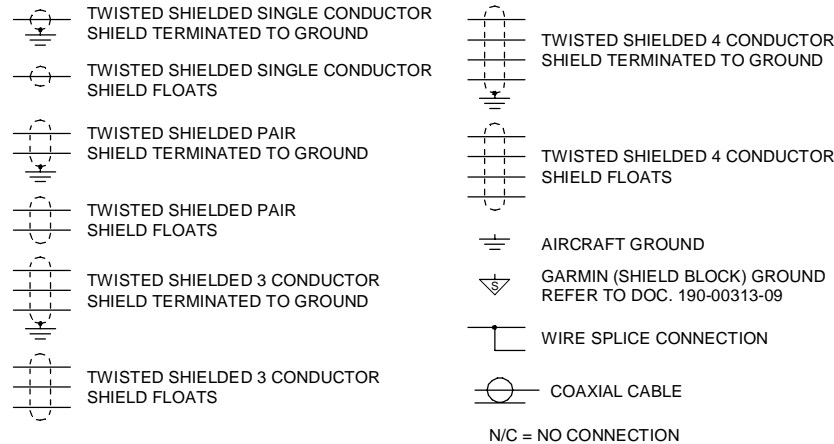
Title	Drawing No.	Rev. No.	No. of Sheets
G1000	D60-9231-60-01_01	A	6
G1000, Optional GDL 69	D60-9231-60-02_01	A	6
G1000, GFC700	D60-9231-60-03_01	A	6
Landing Gear Wiring	D60-9232-00-01	P	1

Intentionally left blank

REVISION				
REV	SH	ZONE	DESCRIPTION	DATE
-	ALL	ALL	MAM 42-587 New drawing, supersedes D60-9231-60-01.	17.11.2011
A	04	ALL	MAM 42-1314 In Sector C3/D3 pin numbers corrected.	14.03.2024

NOTES:

1. SYMBOL DESIGNATIONS



2. NOTE THE FOLLOWING PIN DIFFERENCES IN REV 2 AND REV 3 GIA P603:

PIN NAME	REV 2 PIN	REV 3 PIN
CAN BUS 1 TERMINATION	35	34
CAN BUS 2 HI	29	32

REV 2 UNITS HAVE SERIAL NUMBERS LESS THAN 46901600
REV 3 UNITS HAVE SERIAL NUMBERS OF 46901600 OR GREATER

IDENTIFICATION MARKINGS DP-S-17-00001		FIRST ANGLE PROJECTION		DIMENSIONS METRIC / mm		PROJECT DA 42		Diamond Aircraft Industries GmbH	
CLASSIFICATION: NONE		NAME / SIGN / DATE		WEIGHT: N/A		INTERCHANGEABLE PART NO			
IF NOT OTHERWISE SPECIFIED GEOMETRIC DIMENSIONING AND TOLERANCING ACC. TO ISO 2768-mK		DRAWN:		TITLE SCHEMATIC, G1000		DWG. NO. D60-9231-60-01_01		REV A	
SCALE NTS		CHECKED:		NEXT HIGHER ASSY		FILENAME D60-9231-60-01_01a.dft		SH 01 OF 06	
FORMAT A3		RELEASED:							
SOLID EDGE PDM NO									

F

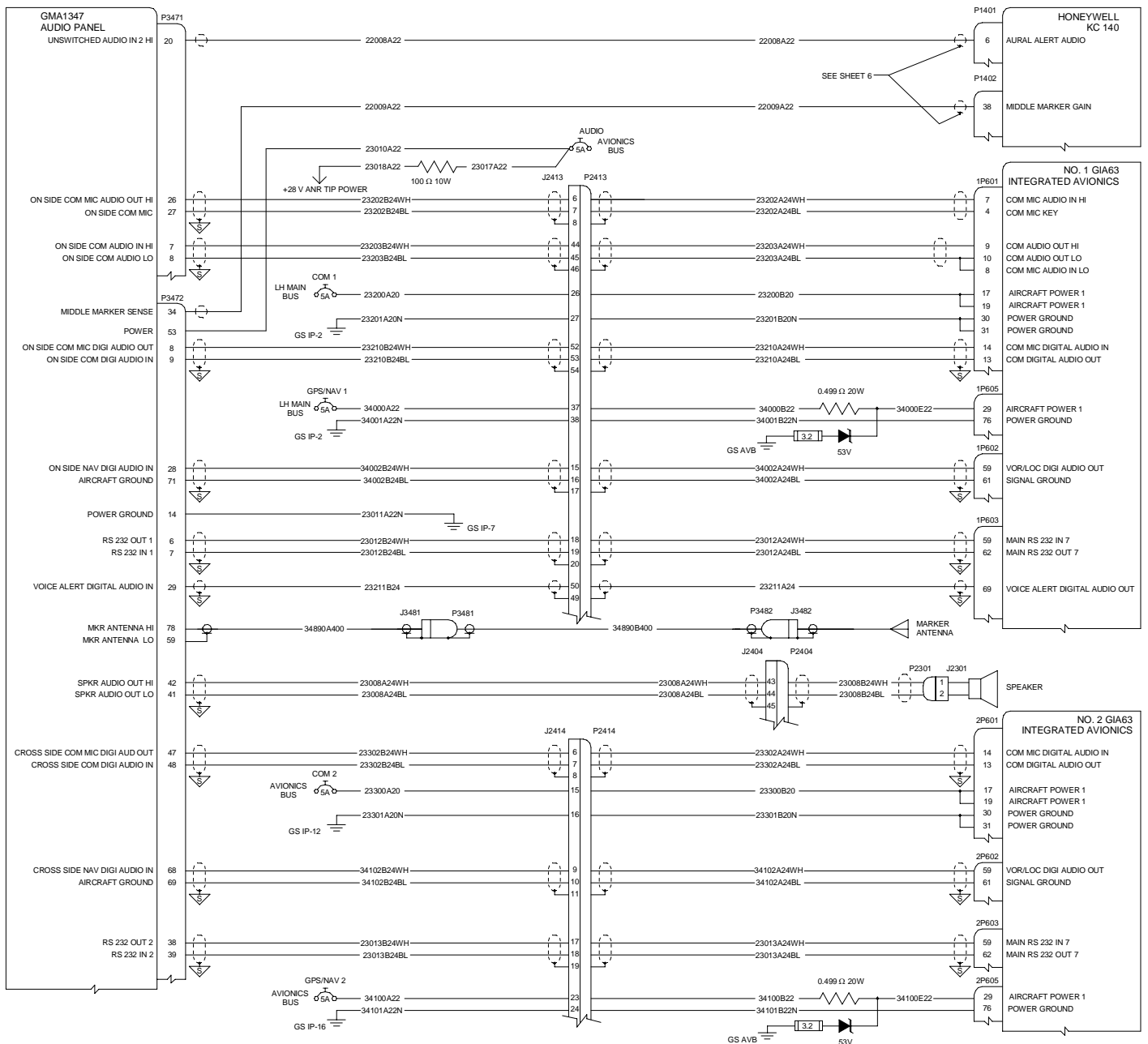
E

D

C

B

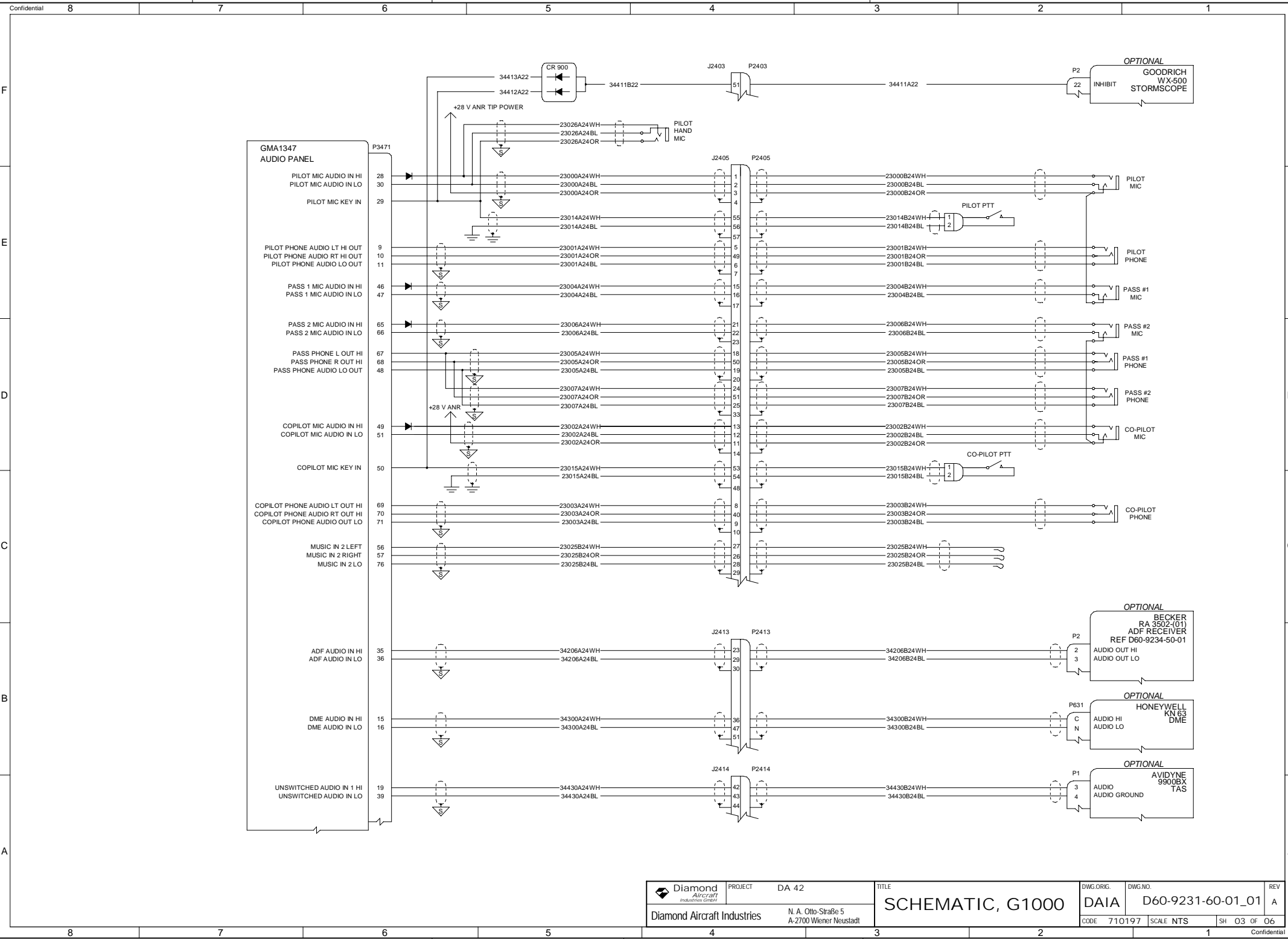
A



ALL INFORMATION CONTAINED HEREIN IS UNCLASSIFIED EXCEPT WHERE SHOWN OTHERWISE. IT IS THE PROPERTY OF DIAMOND AIRCRAFT INDUSTRIES.

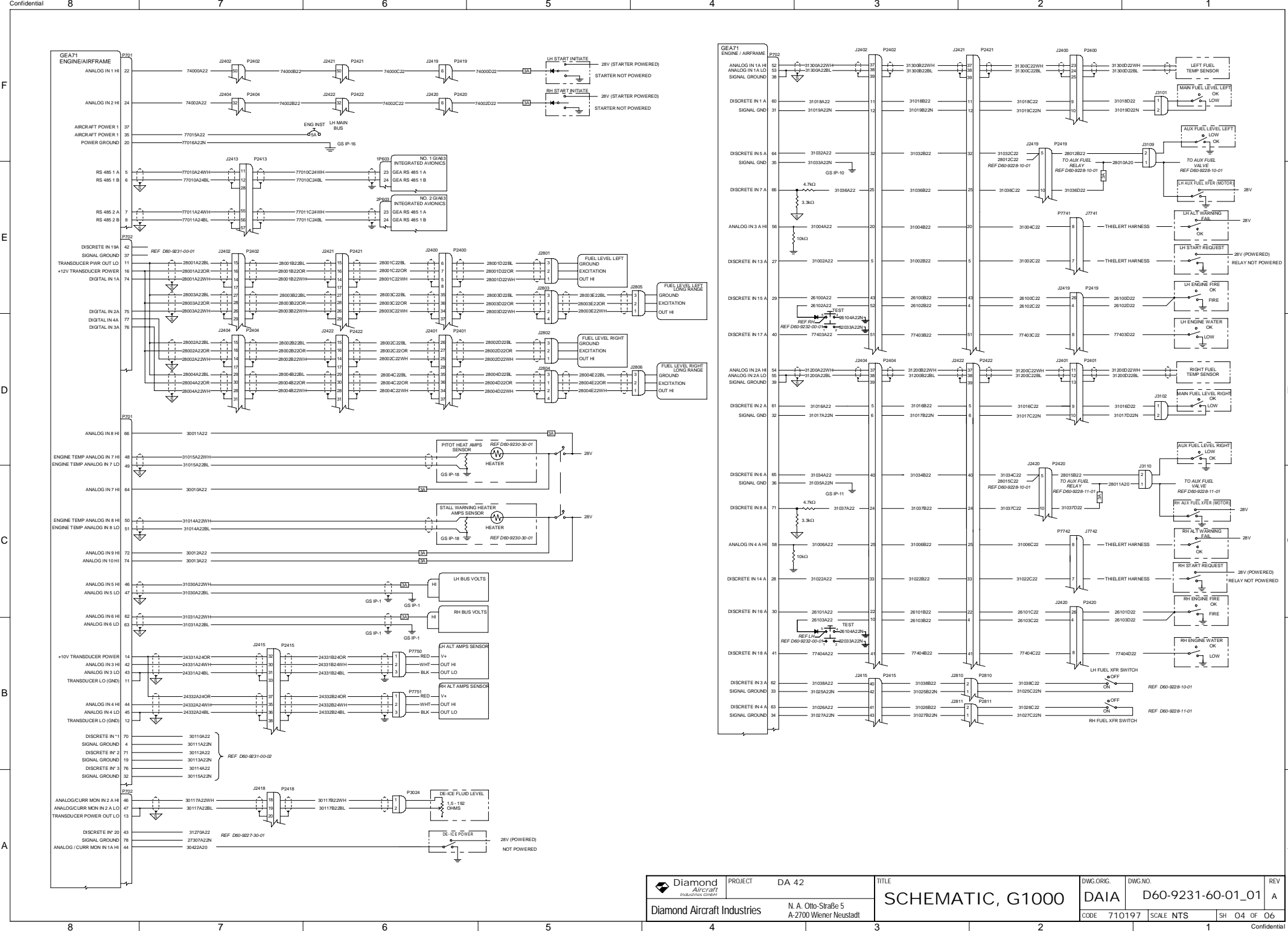
 Diamond Aircraft Industries	PROJECT	DA 42	TITLE	SCHEMATIC, G1000		DWG. ORIG.	DAIA	DWG. NO.	D60-9231-60-01_01	REV	A
	N. A. Otto-Strasse 5 A-2700 Wiener Neustadt				CODE	710197	SCALE	NTS	SH	02 OF 06	Confidential

ALL INFORMATION CONTAINED HEREIN IS UNCLASSIFIED EXCEPT WHERE SHOWN OTHERWISE. IT IS THE PROPERTY OF DIAMOND AIRCRAFT INDUSTRIES.



	PROJECT	DA 42	TITLE	SCHEMATIC, G1000		DWG. ORIG.	DAIA	DWG. NO.	D60-9231-60-01_01	REV	A
	Diamond Aircraft Industries N. A. Otto-Str. 5 A-2700 Wiener Neustadt				CODE	710197	SCALE	NTS	SH	03 OF 06	Confidential

ALL INFORMATION CONTAINED HEREIN IS UNCLASSIFIED EXCEPT WHERE SHOWN OTHERWISE. IT IS THE PROPERTY OF DIAMOND AIRCRAFT INDUSTRIES.



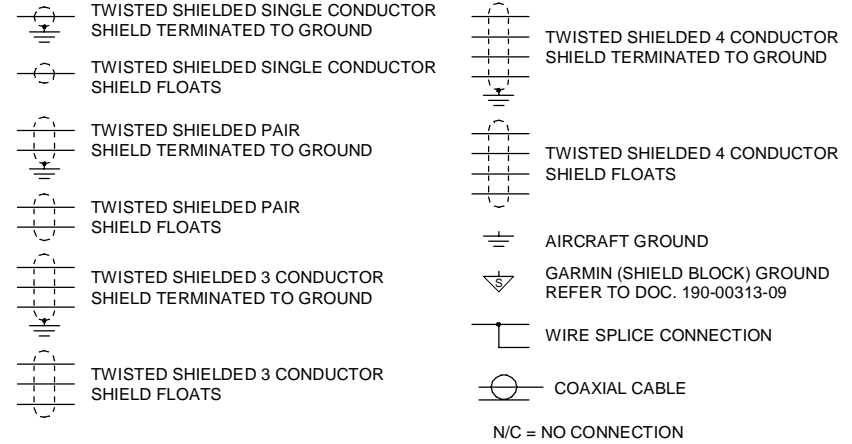
	PROJECT	DA 42	TITLE	SCHEMATIC, G1000		DWG. ORIG.	DWG. NO.	REV
	Diamond Aircraft Industries GmbH N. A. Otto-Strabe 5 A-2700 Wiener Neustadt				DAIA	D60-9231-60-01_01	A	
			CODE	710197	SCALE	NTS	SH	O4 OF O6

Confidential

REVISION				
REV	SH	ZONE	DESCRIPTION	DATE
-	ALL	ALL	MAM 42-587 New drawing, supersedes D60-9231-60-02.	17.11.2011
A	04	ALL	MAM 42-1314 In Sector B3/D3 pin numbers corrected.	14.03.2024

NOTES:

1. SYMBOL DESIGNATIONS



2. NOTE THE FOLLOWING PIN DIFFERENCES IN REV 2 AND REV 3 GIA P603:

PIN NAME	REV 2 PIN	REV 3 PIN
CAN BUS 1 TERMINATION	35	34
CAN BUS 2 HI	29	32

REV 2 UNITS HAVE SERIAL NUMBERS LESS THAN 46901600
REV 3 UNITS HAVE SERIAL NUMBERS OF 46901600 OR GREATER

IDENTIFICATION MARKINGS DP-S-17-00001	FIRST ANGLE PROJECTION	DIMENSIONS METRIC / mm	PROJECT DA 42	Diamond Aircraft Industries GmbH
CLASSIFICATION: NONE	NAME / SIGN / DATE	WEIGHT: N/A N/A	INTERCHANGEABLE PART NO	
IF NOT OTHERWISE SPECIFIED GEOMETRIC DIMENSIONING AND TOLERANCING ACC. TO ISO 2768-mK	DRAWN:	TITLE SCHEMATIC, G1000 OPTIONAL GDL69		
SCALE NTS	CHECKED:	DWG. NO. D60-9231-60-02_01	REV A	
FORMAT A3	RELEASED:	NEXT HIGHER ASSY		
SOLID EDGE PDM NO		FILENAME D60-9231-60-02_01a.dft	SH 01 OF 06	

F

E

D

C

B

A

F

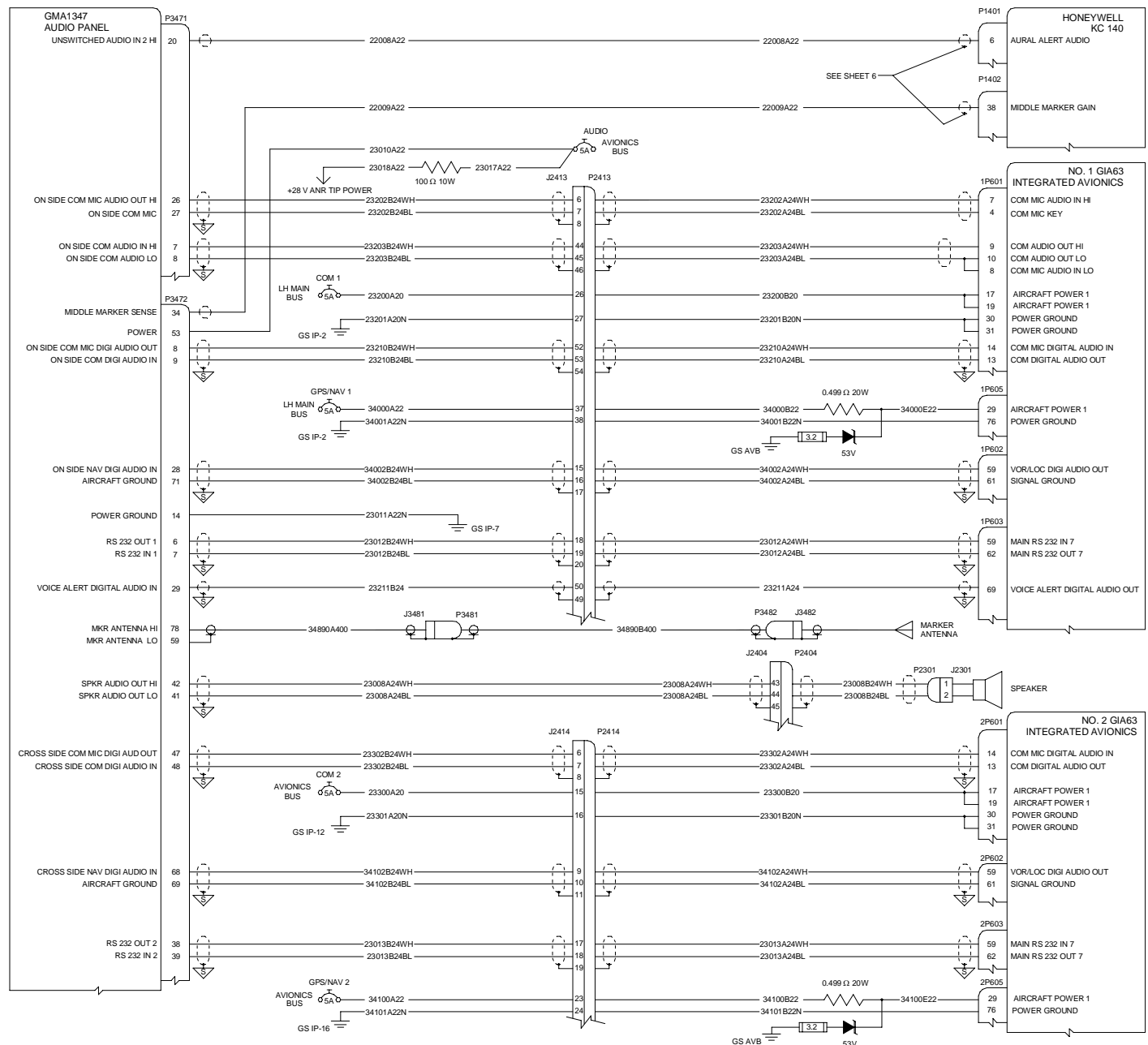
E

D

C

B

A



ALL INFORMATION CONTAINED HEREIN IS UNCLASSIFIED TO THE EXTENT PERMITTED BY THE APPLICABLE LAWS OF THE UNITED STATES OF AMERICA. DATE OF DECLASSIFICATION IS INDEFINITE. THIS DOCUMENT IS THE PROPERTY OF DIAMOND AIRCRAFT INDUSTRIES.

	PROJECT	DA 42	TITLE	DWG. ORG.	DWG. NO.	REV
	Diamond Aircraft Industries N. A. Otto-Strasse 5 A-2700 Wiener Neustadt			SCHEMATIC, G1000 OPTIONAL GDL69	DAIA	D60-9231-60-02_01
				CODE 710197	SCALE NTS	SH 02 OF 06
						Confidential

F

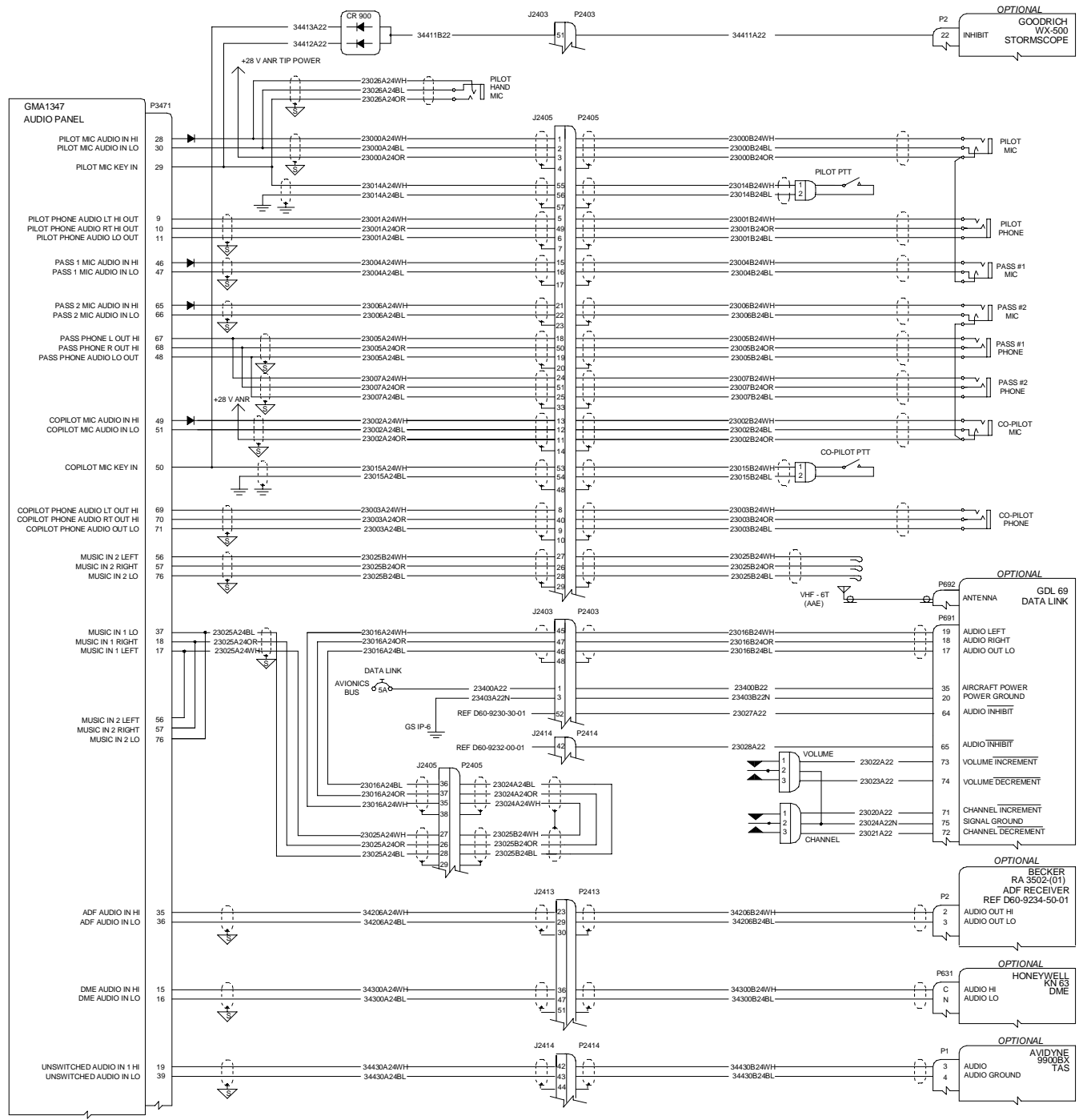
E

D

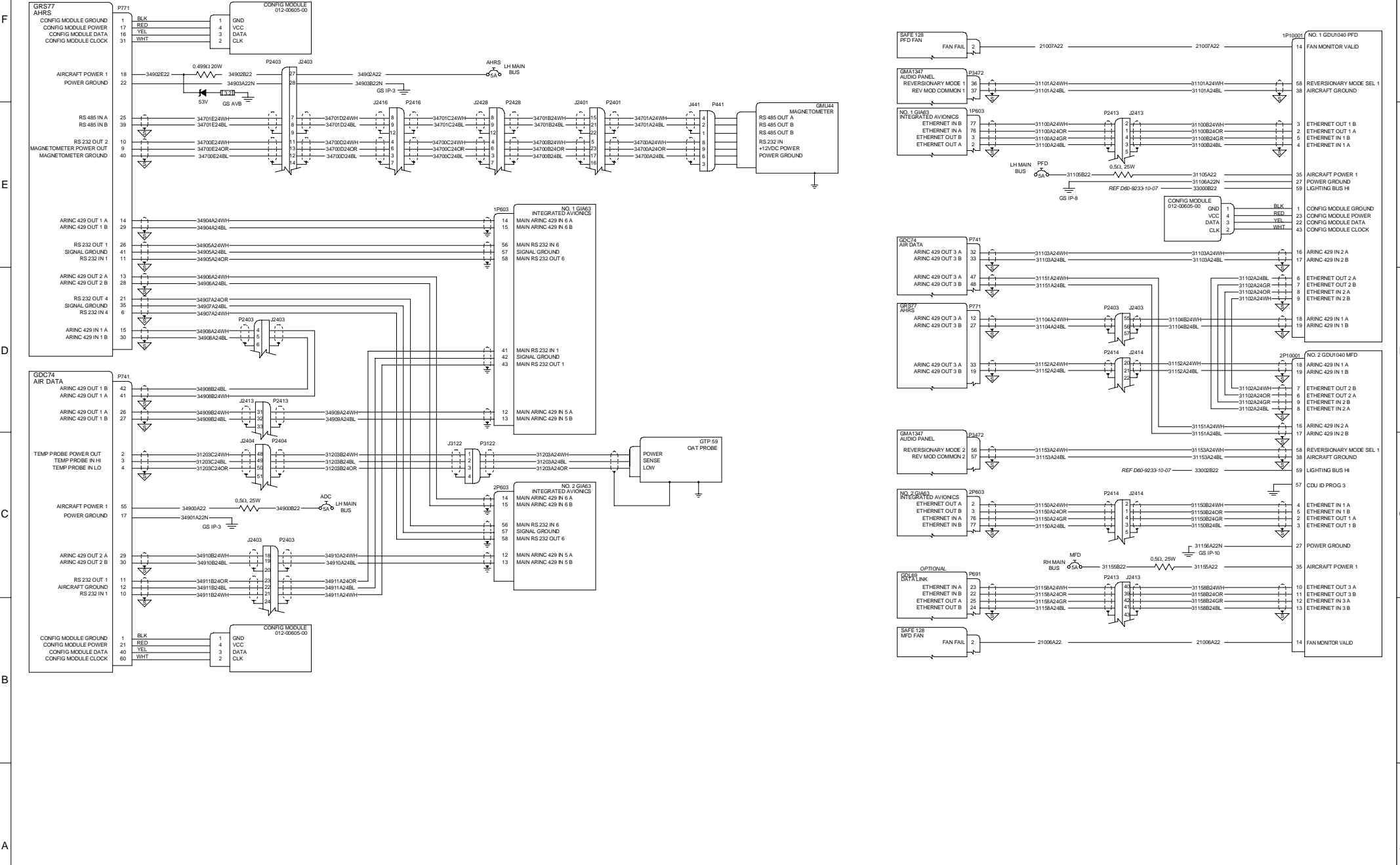
C

B

A



ALL INFORMATION CONTAINED HEREIN IS UNCLASSIFIED EXCEPT WHERE SHOWN OTHERWISE AND IS UNCLASSIFIED TO THE EXTENT PERMITTED BY THE APPLICABLE LAWS OF THE UNITED STATES OF AMERICA. DIAMOND AIRCRAFT INDUSTRIES

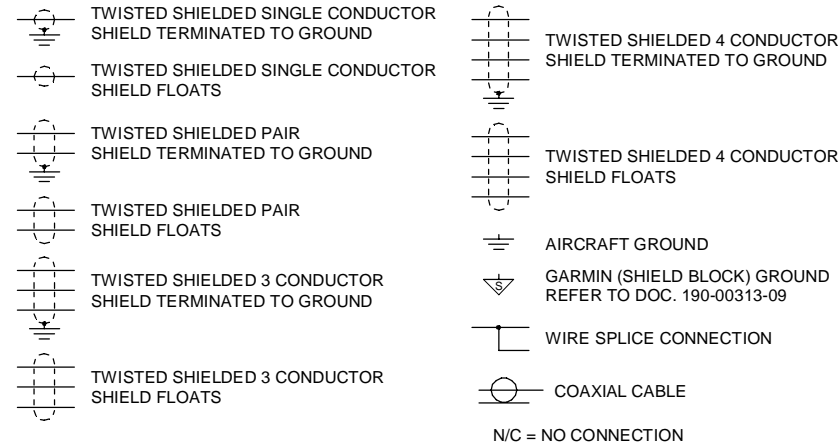


ALL INFORMATION CONTAINED HEREIN IS UNCLASSIFIED EXCEPT WHERE SHOWN OTHERWISE. IT IS THE PROPERTY OF DIAMOND AIRCRAFT INDUSTRIES.

REVISION				
REV	SH	ZONE	DESCRIPTION	DATE
-	ALL	ALL	MAM 42-587 New drawing, supersedes D60-9231-60-03.	17.11.2011
A	04	ALL	MAM 42-1314 In Sector B3/D3 pin numbers corrected.	14.03.2024

NOTES:

1. SYMBOL DESIGNATIONS



2. NOTE THE FOLLOWING PIN DIFFERENCES IN REV 2 AND REV 3 GIA P603:

PIN NAME	REV 2 PIN	REV 3 PIN
CAN BUS 1 TERMINATION	35	34
CAN BUS 2 HI	29	32

REV 2 UNITS HAVE SERIAL NUMBERS LESS THAN 46901600
REV 3 UNITS HAVE SERIAL NUMBERS OF 46901600 OR GREATER

3. USE DOUBLE-SHIELDED WIRING: BOTH SHIELDS SHOULD BE GROUNDED ON THE RECEIVING SIDE; ON THE TRANSMITTING SIDE, ONLY THE OUTER SHIELD SHOULD BE GROUNDED, WHILE THE INNER SHIELD SHOULD FLOAT.

IDENTIFICATION MARKINGS DP-S-17-00001		FIRST ANGLE PROJECTION	DIMENSIONS METRIC / mm		PROJECT DA 42		Diamond Aircraft Industries GmbH	
CLASSIFICATION: NONE			NAME / SIGN / DATE		WEIGHT: N/A N/A		INTERCHANGEABLE PART NO	
IF NOT OTHERWISE SPECIFIED GEOMETRIC DIMENSIONING AND TOLERANCING ACC. TO ISO 2768-mK		DRAWN:	TITLE SCHEMATIC, G1000, GFC700					
SCALE NTS			CHECKED:	DWG. NO. D60-9231-60-03_01		REV A		
FORMAT A3		RELEASED:		NEXT HIGHER ASSY				
SOLID EDGE PDM NO			FILENAME D60-9231-60-03_01a.dft		SH 01 OF 06			

F

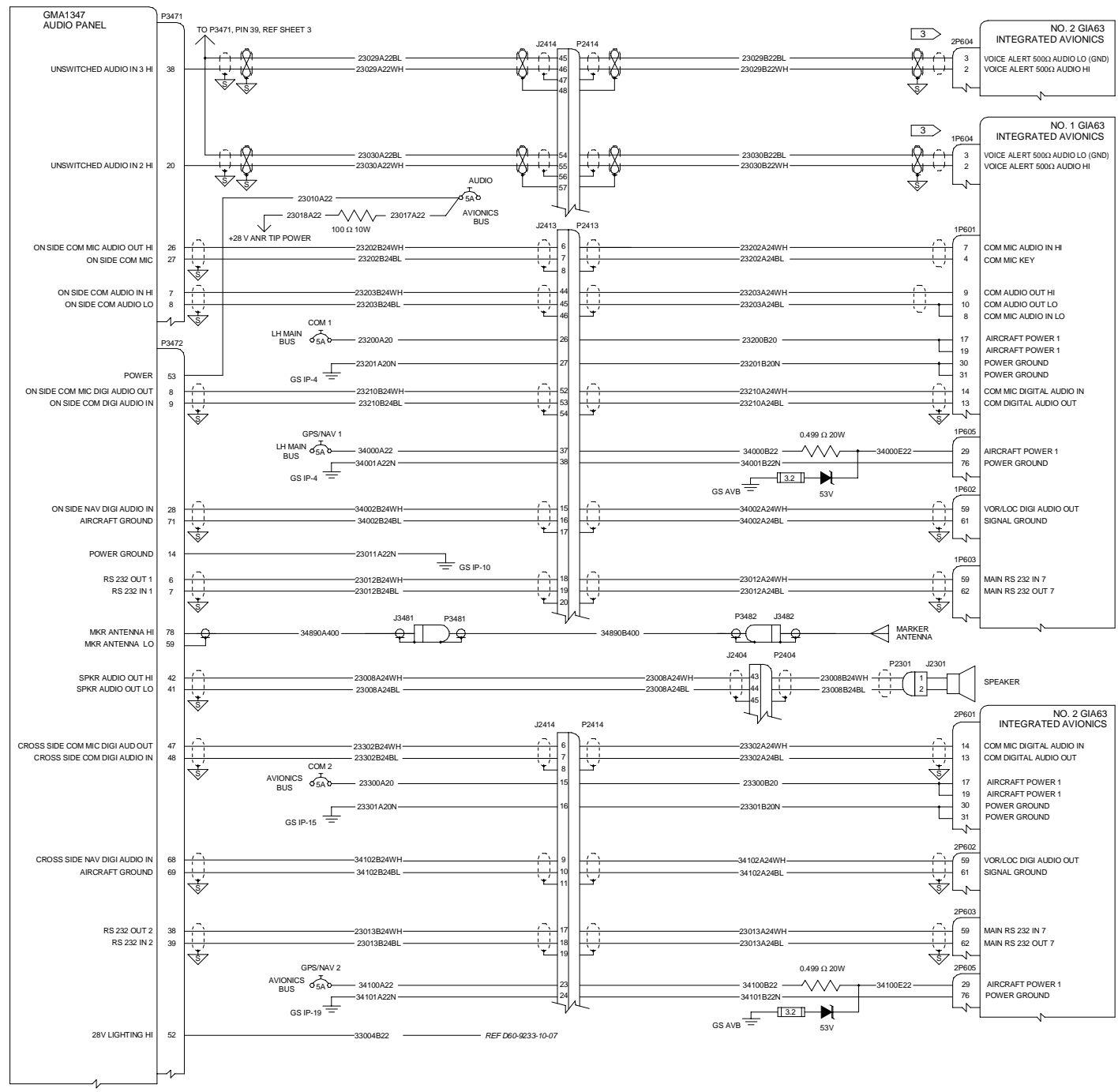
E

D

C

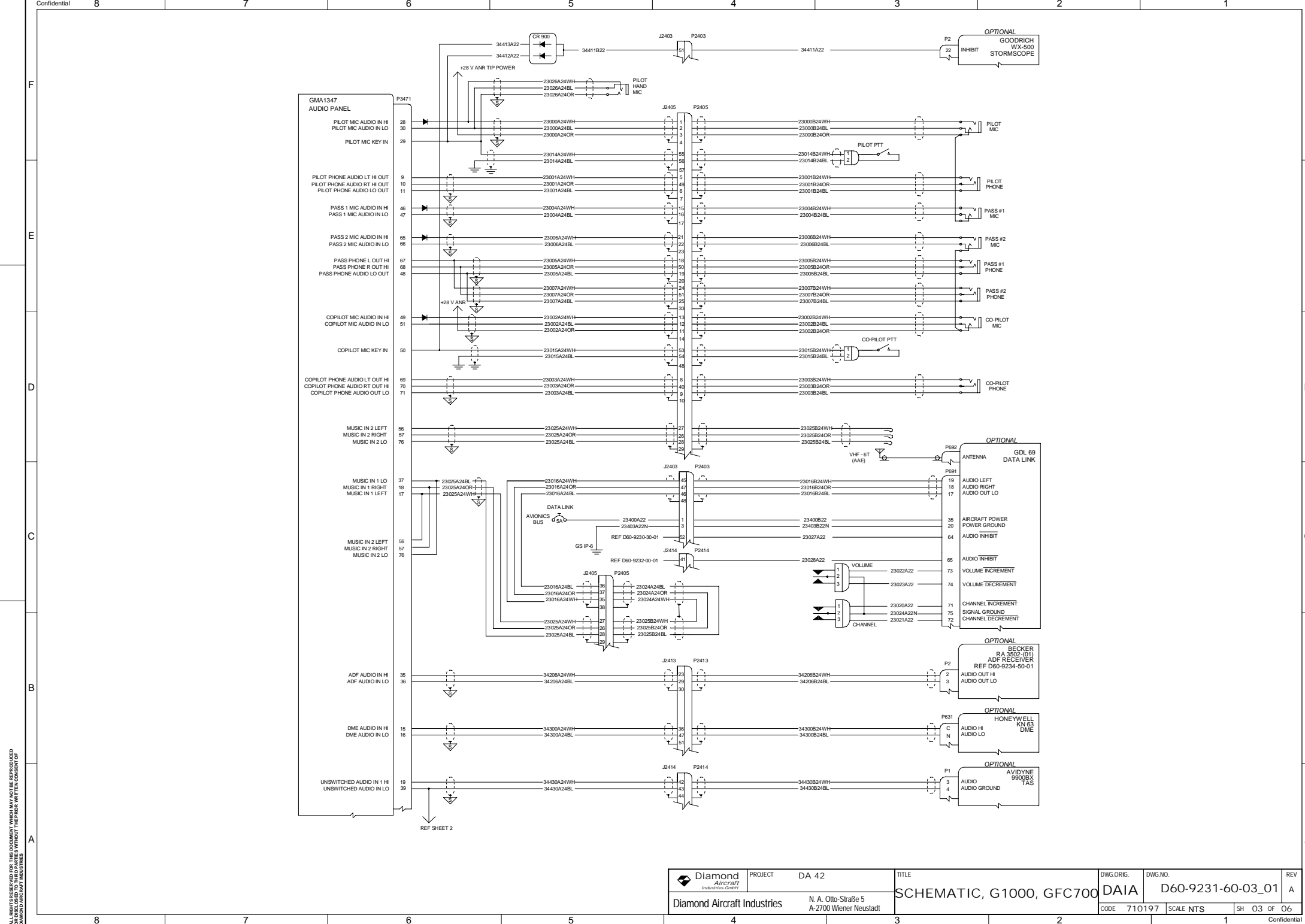
B

A



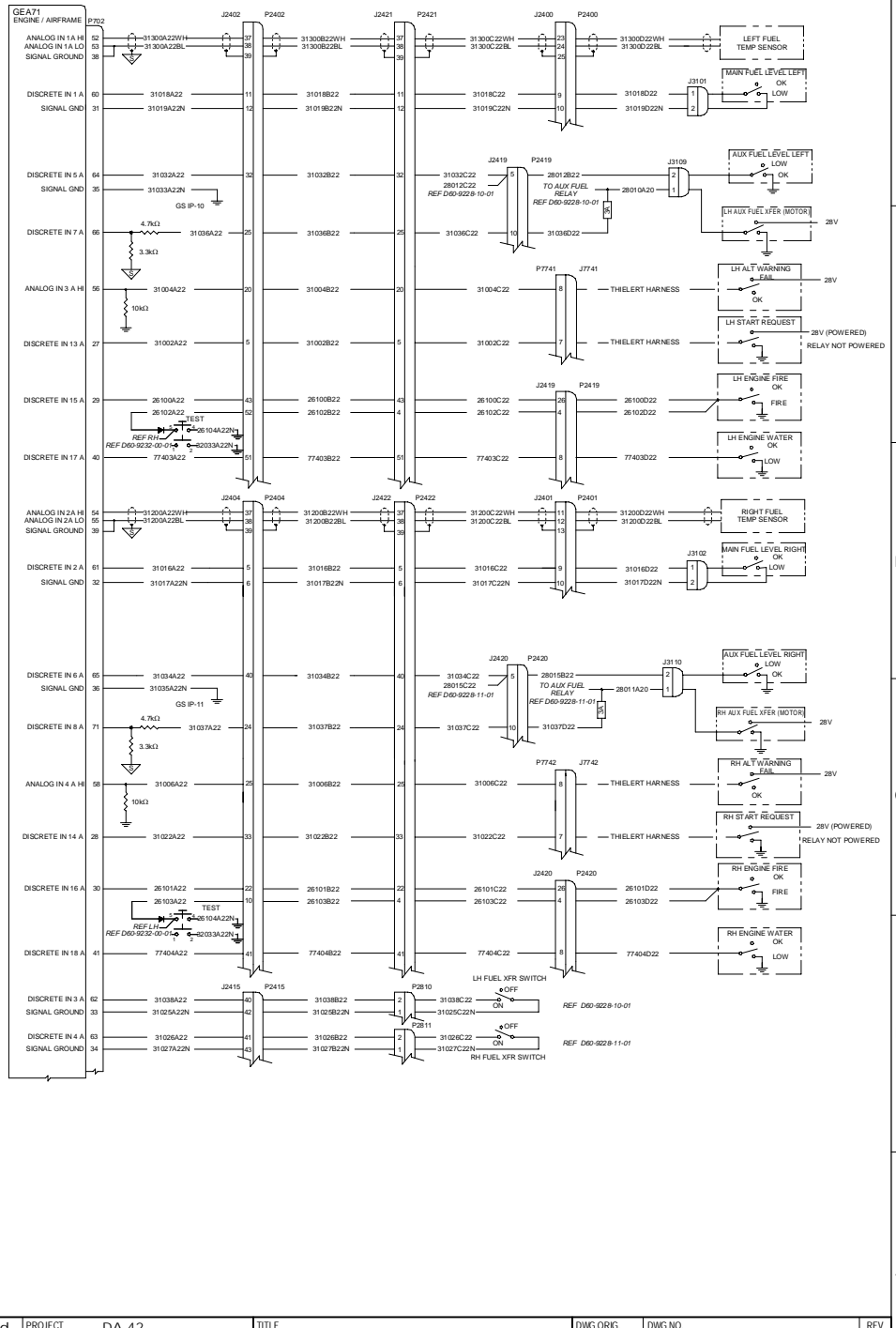
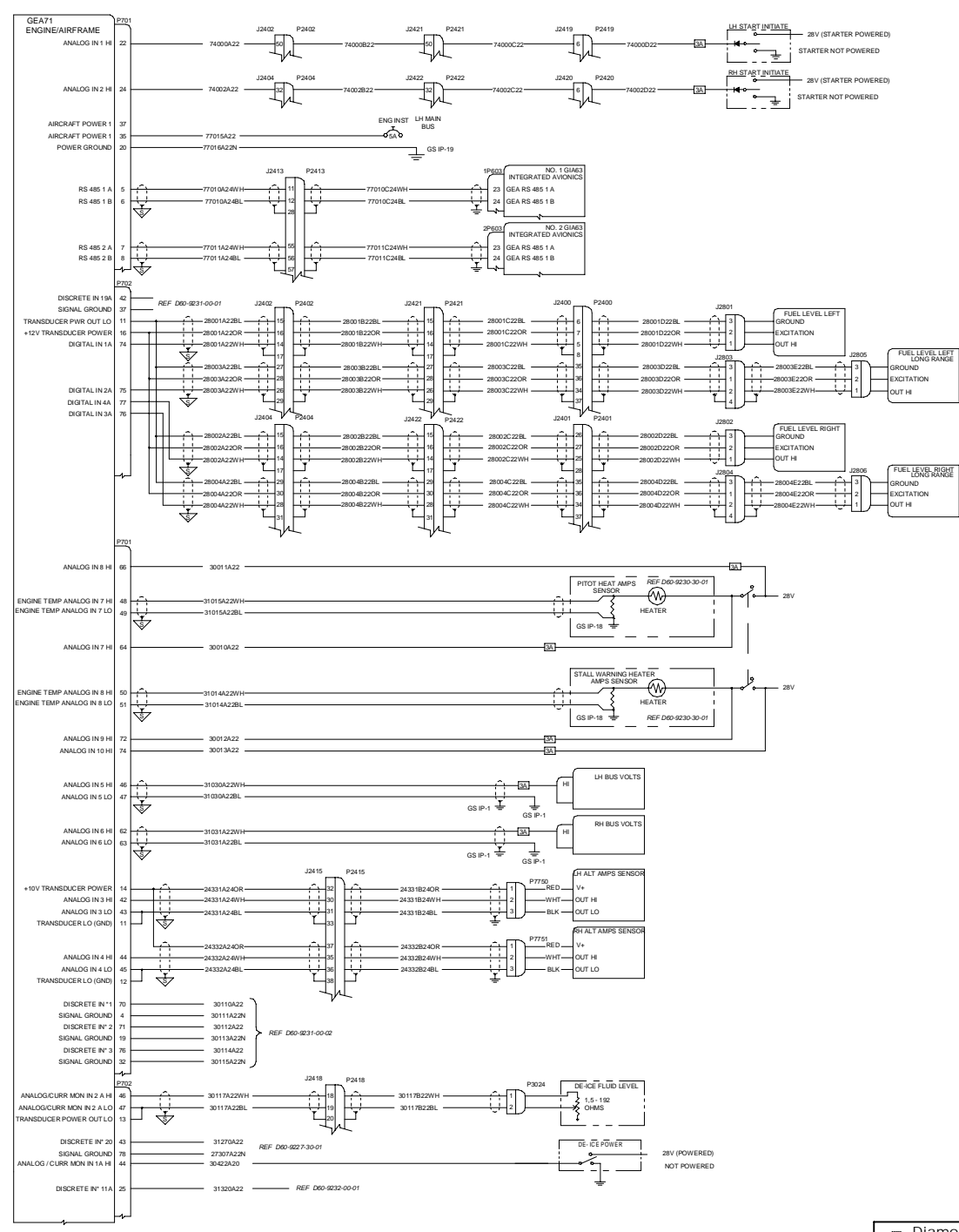
ALL INFORMATION CONTAINED HEREIN IS UNCLASSIFIED TO THE EXTENT POSSIBLE WITHOUT INFRINGING ON PATENT RIGHTS OR TRADE SECRET RIGHTS OF DIAMOND AIRCRAFT INDUSTRIES.

	PROJECT	DA 42	TITLE	SCHEMATIC, G1000, GFC700		DWG. ORG.	DAIA	DWG. NO.	D60-9231-60-03_01	REV	A
	Diamond Aircraft Industries N. A. Otto-Straße 5 A-2700 Wiener Neustadt				CODE	710197	SCALE	NTS	SH	02 OF 06	Confidential



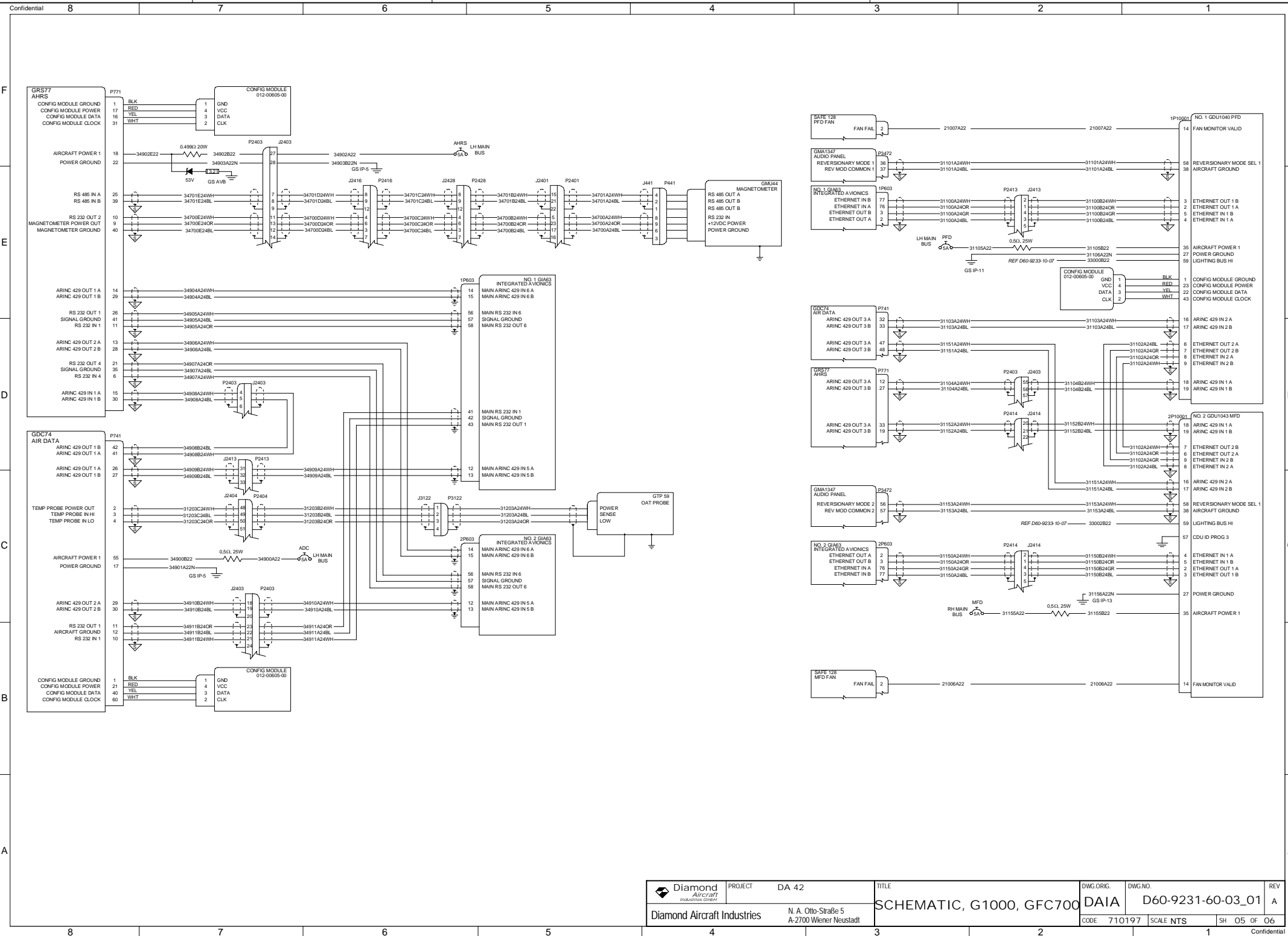
ALL INFORMATION CONTAINED HEREIN IS UNCLASSIFIED EXCEPT WHERE SHOWN OTHERWISE AND IS NOT TO BE REPRODUCED OR DISCLOSED TO THE PUBLIC WITHOUT THE WRITTEN CONSENT OF DIAMOND AIRCRAFT INDUSTRIES.

	PROJECT	DA 42	TITLE	SCHEMATIC, G1000, GFC700		DWG. ORIG.	DWG. NO.	REV
	N. A. Otto-Strasse 5 A-2700 Wiener Neustadt				DAIA	D60-9231-60-03_01	A	
			CODE	710197	SCALE	NTS	SH	03 OF 06



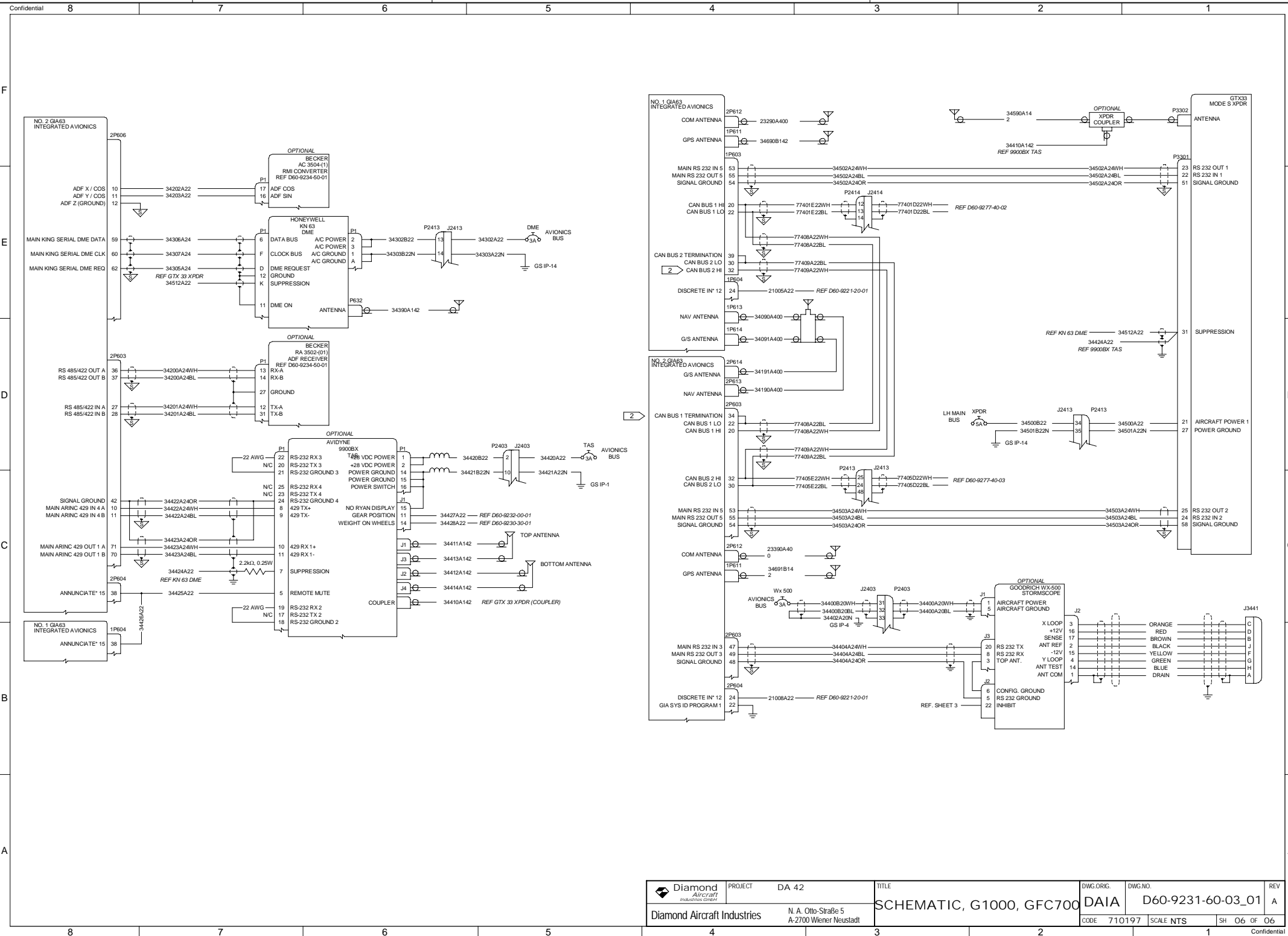
ALL INFORMATION ON THIS DOCUMENT IS UNCLASSIFIED UNLESS INDICATED OTHERWISE. IT IS UNCLASSIFIED TO THE EXTENT POSSIBLE WITHOUT HINDERING THE PROTECTION OF CONFIDENTIALITY OF DIAMOND AIRCRAFT INDUSTRIES.

	PROJECT	DA 42	TITLE	SCHEMATIC, G1000, GFC700		DWG. ORG.	DAIA	DWG. NO.	D60-9231-60-03_01	REV	A
	Diamond Aircraft Industries GmbH N. A. Otto-Strabe 5 A-2700 Wiener Neustadt					CODE	710197	SCALE	NTS	SH	O4 OF O6



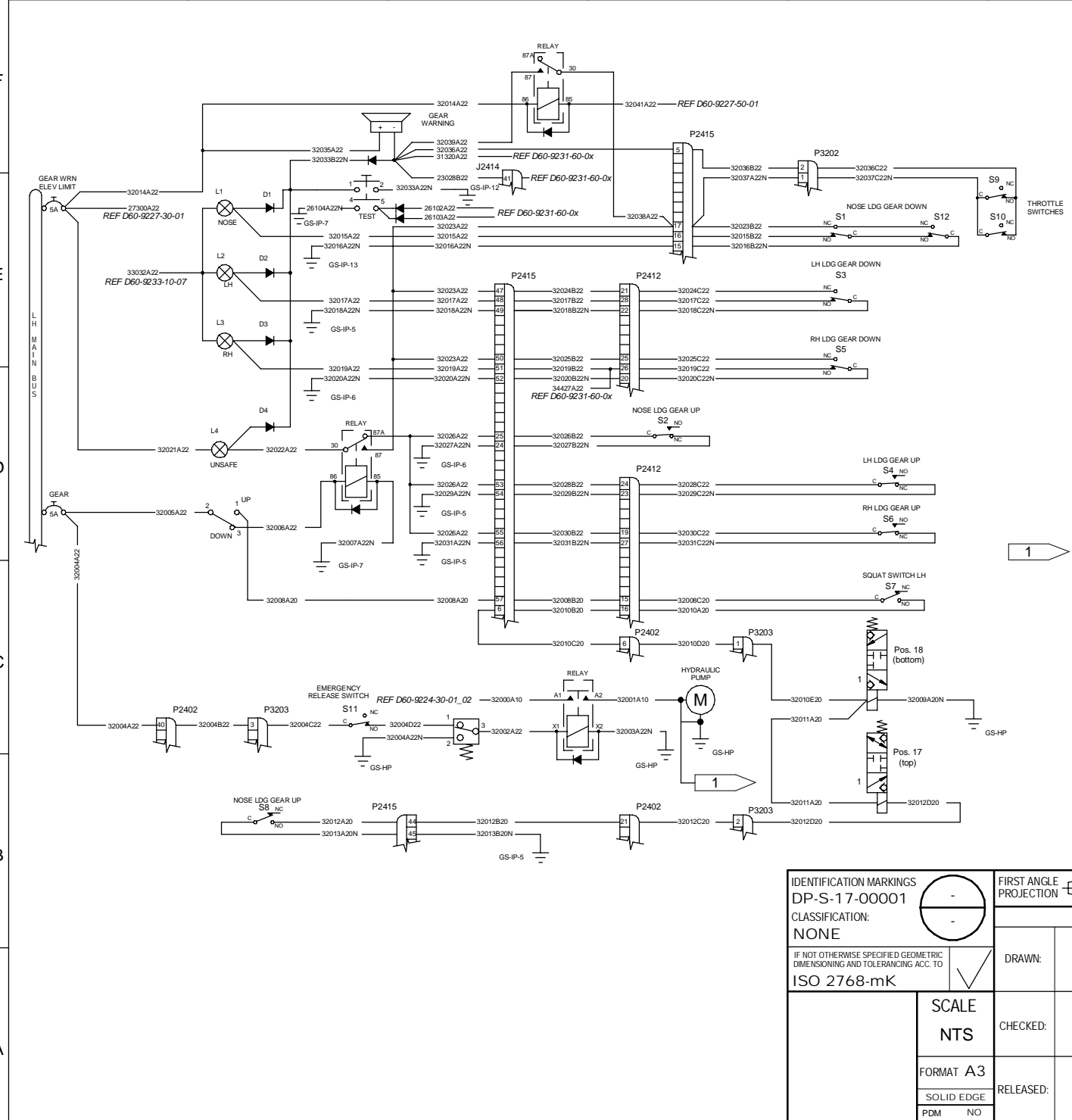
ALL INFORMATION CONTAINED HEREIN IS UNCLASSIFIED EXCEPT WHERE SHOWN OTHERWISE. IT IS THE PROPERTY OF DIAMOND AIRCRAFT INDUSTRIES.

	PROJECT	DA 42	TITLE	SCHEMATIC, G1000, GFC700		DWG. ORG.	DAIA	DWG. NO.	D60-9231-60-03_01	REV	A
	Diamond Aircraft Industries GmbH		N. A. Otto-Strabe 5 A-2700 Wiener Neustadt		CODE	710197	SCALE	NTS	SH	05 OF 06	Confidential



ALL DIMENSIONS AND TOLERANCES UNLESS OTHERWISE SPECIFIED ARE IN MILLIMETERS AND DECIMALS OF AN INCH. DIMENSIONS IN PARENTHESES ARE FOR REFERENCE ONLY. THIS DRAWING IS THE PROPERTY OF DIAMOND AIRCRAFT INDUSTRIES.

	PROJECT	DA 42	TITLE	SCHEMATIC, G1000, GFC700		DWG. ORIG.	DWG. NO.	REV
	N. A. Otto-Strasse 5 A-2700 Wiener Neustadt				DAIA	D60-9231-60-03_01	A	
CODE 710197 SCALE NTS SH 06 OF 06						CONFIDENTIAL		



REVISION				
REV	SH	ZONE	DESCRIPTION	DATE
N	01	ALL	MAM 42-775 Wire between S1 and S12 added, wire number 32020A20N corrected to 32020A22N. Drawing converted to new drawing standard.	23.07.2013
O	01	ALL	MAM 42-1126 Flag note 1 added. Drawing converted to new drawing standard.	25.03.2019
P	01	ALL	MAM 42-1314 In Sector F6 pin numbers corrected.	14.03.2024

FLAG NOTES



TIGHTEN CONNECTION BY HOLDING THE LOWER NUT AND APPLYING TORQUE TO THE UPPER NUT.
TORQUE: 9-11Nm

GENERAL NOTES

1. WIRING SHOWN WITH LANDING GEARS DOWN AND LOCKED, THROTTLE IN IDLE AND NOT POWERED.
2. S1, S3, S5, S12 CLOSED WHEN LANDING GEARS DOWN AND LOCKED, S7 OPENED WHEN AIRPLANE ON GROUND, S2, S4, S6 OPENED WHEN LANDING GEARS UP AND LOCKED, S7 CLOSED WHEN AIRPLANE AIRBORN. S8 OPENED WHEN NOSE LANDING GEAR DOWN, S8 CLOSED WHEN NOSE LANDING GEAR UP. S9 AND S10 CLOSED WHEN BOTH POWER LEVERS ARE IN IDLE POSITION.
3. TEST SWITCH WIRED NORMALLY OPEN.

ALL RIGHTS RESERVED FOR THIS DOCUMENT WHICH MAY NOT BE REPRODUCED OR DISCLOSED TO THIRD PARTIES WITHOUT THE PRIOR WRITTEN CONSENT OF DIAMOND AIRCRAFT INDUSTRIES

IDENTIFICATION MARKINGS DP-S-17-00001		FIRST ANGLE PROJECTION	DIMENSIONS METRIC / mm		PROJECT DA 42				
CLASSIFICATION: NONE			NAME / SIGN / DATE		WEIGHT: N/A N/A		INTERCHANGEABLE PART NO		
IF NOT OTHERWISE SPECIFIED GEOMETRIC DIMENSIONING AND TOLERANCING ACC. TO ISO 2768-mK		DRAWN:		TITLE SCHEMATIC, LANDING GEAR WIRING					
SCALE NTS		CHECKED:		DWG.NO. D60-9232-00-01		REV P			
FORMAT A3 SOLID EDGE PDM NO		RELEASED:		NEXT HIGHER ASSY					
				FILENAME D60-9232-00-01p.dft					
				SH 01 OF 01					