

# TEMPORARY REVISION

## AMM-TR-MÄM 42-1021

### Rudder Trim Tab Indication System

This Temporary Revision AMM-TR-MÄM 42-1021 is approved in conjunction with the Optional Design Change Advisory MÄM 42-1021 and is valid in conjunction with the Airplane Maintenance Manual (AMM) until this Temporary Revision has been incorporated into the AMM.

The limitations and information contained herein either supplement or, in the case of conflict, override those in the AMM.

The technical information contained in this document has been approved under the authority of DOA No. EASA.21J.052.

Doc. No.	Section	Affected Pages
7.02.01	27-21-00	207, 208, 209, 210

#### Instruction

- Print this document double-sided on yellow paper (odd pages and "a" pages on front sides, even pages and "aa" pages on reverse sides).
- Insert this cover page as the first page of the AMM.
- Insert the other pages of this Temporary Revision in front of the corresponding AMM pages.



Intentionally left blank

**AFFECTED CHAPTERS:**

**CHAPTER 27**  
**FLIGHT CONTROLS**  
**Section 27-21-00**  
**Flight Controls - Rudder Trim**  
**Maintenance Practices**

*The following procedure is added:*

**4. Adjust the Rudder Trim Tab Indication system (if MÄM 42-1021 is installed)**

If a rigging pin has been installed through the holes in the center console structure and the bellcrank and the rudder trim tab indicator does not indicate neutral, use this procedure to adjust the trim tab indicator.

**A. Equipment**

Item	Quantity	Part Number
Rigging pin (Ø 4 mm [0.16 in])	1	VR-D41-2757-3000.
Special tool Rudder Trim Indication	1	D64-7613-10-00-ST.

**B. Rudder Trim Tab Indication System Adjustment Procedure**

	Detail Steps/ Work Items	Key Item/References
(1)	Remove the access panel from the side of the center console: <ul style="list-style-type: none"> <li>– Remove the 3 screws that attach the access panel to the structure.</li> <li>– Move the access panel clear of the center console.</li> </ul>	
(2)	Install a rigging pin through the holes in the center console structure and the bellcrank.	The rudder trim tab indicator must indicate neutral.

	Detail Steps/ Work Items	Key Item/References
(3)	<p>Remove upper cover plate:</p> <ul style="list-style-type: none"> <li>– Remove set screw on rudder trim knob.</li> <li>– Unscrew rudder trim knob.</li> <li>– Remove torx countersunk on parking brake, defrost and cabin heat levers (3x).</li> <li>– Disassemble lever knobs (3x).</li> <li>– Remove torx countersunk screw (4x) on the upper cover plate.</li> <li>– Remove upper cover plate.</li> </ul>	<p>Refer to Figure 3.</p>
(4)	<p>Adjust drive coil position to set rudder trim indication to neutral position. The drive coil sits on the drive coil driver with pins and can be lifted to rotate the drive coil relative to the drive coil driver.</p> <ul style="list-style-type: none"> <li>– Attach special tool.</li> <li>– Rotate drive coil until the indicator of the special tool is centered above a groove in the drive coil.</li> <li>– Remove special tool.</li> <li>– Verify rudder trim indication by attaching the upper cover plate aligned with the screw holes.</li> </ul> <p>Make sure to manually set the red line of the indication to a centered position while placing the upper cover plate. The indication mechanism has play which should be equal in both directions from neutral position.</p> <ul style="list-style-type: none"> <li>– Repeat adjustment until neutral position is indicated correctly.</li> </ul>	<p>D64-7613-10-00-ST. Refer to Figure 3.</p>

	Detail Steps/ Work Items	Key Item/References
(5)	Install upper cover plate: <ul style="list-style-type: none"> <li>– Attach upper cover plate.</li> <li>– Fix upper cover plate in place with new screws (4x).</li> <li>– Assemble lever knobs and secure with the new screws (3x).</li> <li>– Attach rudder trim knob.</li> </ul> Screw the rudder trim knob onto the spindle until encountering first resistance. Turn the knob back again until the thread for the set screw is perpendicular to the flat (milled) part of the spindle's thread. Clean the set screw. Tighten the set screw and secure it with adhesive.	Secure with Loctite 262.
(6)	Remove the rigging pin from the center control console.	
(7)	Operate the rudder trim control knob fully clockwise, then counterclockwise, then set the control knob to the neutral position.	The system must operate smoothly throughout the full range of movement.
(8)	Install the access panel in the side of the center console that you removed: <ul style="list-style-type: none"> <li>– Make sure that there are no foreign objects in the center console.</li> <li>– Move the access panel into position at the center console.</li> <li>– Install the 3 screws that attach the access panel to the center console.</li> </ul>	

The following figure is added:

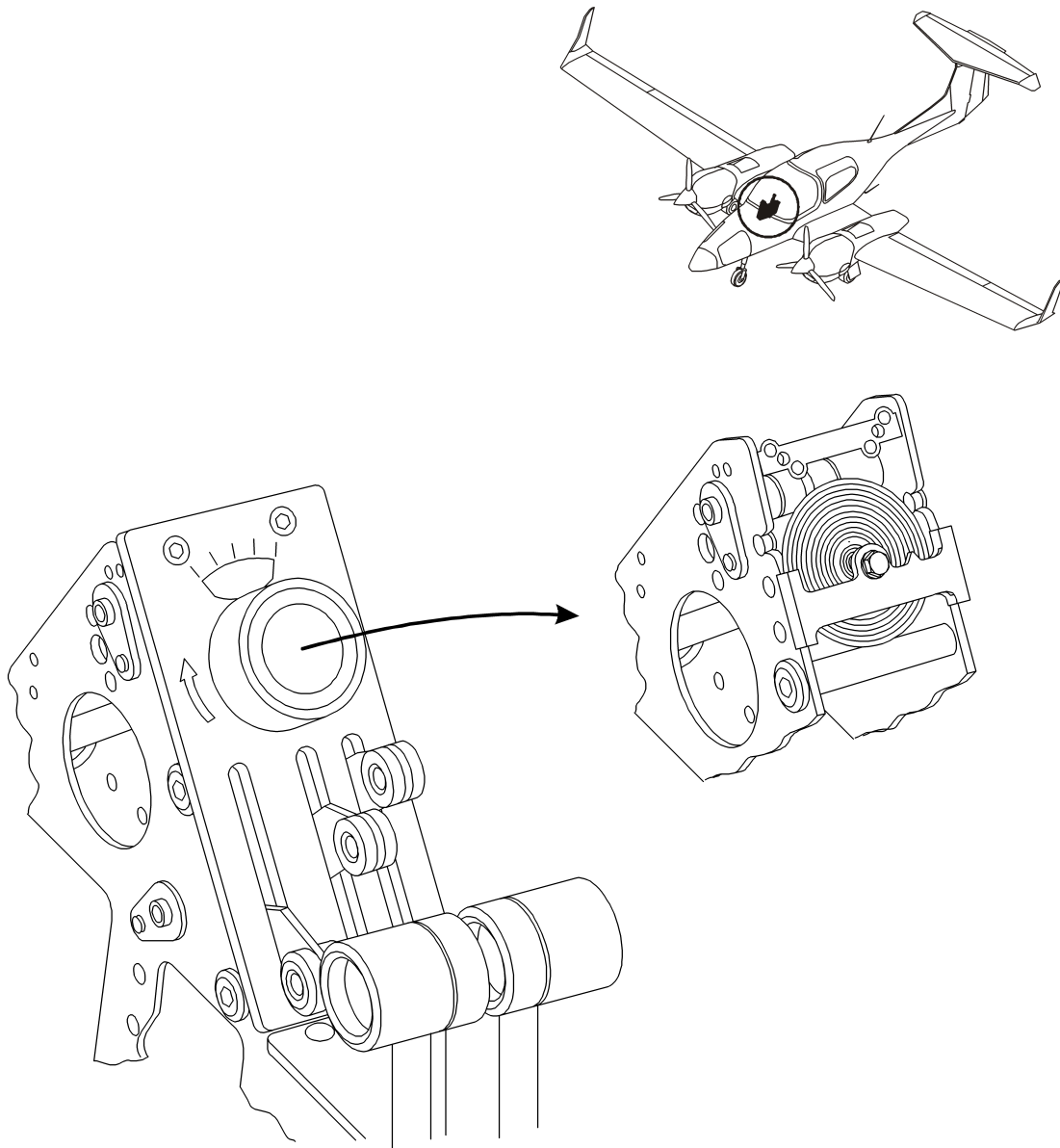


Figure 3: Adjust the Rudder Trim Tab Indication System