

OPTIONAL SERVICE BULLETIN

OSB 42-135/1

OSB 42NG-076/1

supersedes OSB 42-135 and OSB 42NG-076

I TECHNICAL DETAILS

I.1 Category

Optional.

I.2 Airplanes affected

Type: DA 42, DA 42 M, DA 42 NG, DA 42 M-NG

Serial numbers: 42.004 through 42.427
42.AC001 through 42.AC151
42.M001 through 42.M026
42.N001 through 42.N067
42.N100 through 42.N250
42.N300 through 42.N323
42.NC001 through 42.NC008
42.MN001 through 42.MN042
42.MN050 through 42.MN055
42.NW001 through 42.NW029
42.MNW001 through 42.MNW004

I.3 Date of effectivity

05-Jul-2018

I.4 Time of Compliance

At owner's discretion.

I.5 Subject

Installation of the New Map Lights and Map Light Sealing.

ATA-Code: 33-13

I.6 Reason

Diamond Aircraft has developed a redesigned Map Light with improved sealing. This Service Bulletin describes the retrofit installation on airplanes already in service.

I.7 Concurrent Documents

None.

I.8 Approval

The technical information or instructions contained in this document relate to the Design Change Advisories No. MÄM 42-1024/f and MÄM 42-1094/a, which have been approved under the authority of EASA Design Organization Approval ref. EASA.21J.052.

The technical content of this document has been approved under the authority of DOA ref. EASA.21J.052.

I.9 Accomplishments / Instructions

Comply with WI-OSB 42-135 / WI-OSB 42NG-076 latest effective issue.

I.10 Mass (Weight) and CG

Approximately 333 g weight increase.

II PLANNING INFORMATION**II.1 Material and Availability**

See WI-OSB 42-135, WI-OSB 42NG-076 latest effective issue.

II.2 Special Tools

None.

II.3 Labour Effort

Approx. 1.5 hours.

II.4 Credit

None.

II.5 Reference Documents

DA 42 Series Airplane Maintenance Manual, Doc. No. 7.02.01, latest effective issue.

DA 42 NG Airplane Maintenance Manual, Doc. No. 7.02.15, latest effective issue.

III REMARKS

1. All work must be done by a certified aircraft service station or a certified aircraft maintenance mechanic.
2. All work, particular that which is not especially described in this Service Bulletin, must be done in accordance with the referenced Maintenance Manual.
3. Completion of all work must be recorded in the log book.
4. In case of doubt contact Diamond Aircraft Industries GmbH.

**EXECUTION REPORT TO
SERVICE BULLETIN
OSB 42-135/1
OSB 42NG-076/1**

AIRPLANE INFORMATION

Airplane Serial Number _____

Airplane Registration _____

Airplane Operator _____

Hours of operation of airplane _____

No. of landings _____

Hours of operation-engine LH _____

RH _____

Typical operation of airplane private, club, training, other _____

Date, Name, SignPlease e-mail the completed form executionreports@diamondaircraft.com

WORK INSTRUCTION

WI-OSB 42-135

WI-OSB 42NG-076

I GENERAL INFORMATION

I.1 Subject

Installation of the new Map Light Assy or new Map Light Sealing.

I.2 Reference Documents

DA 42 Airplane Maintenance Manual, Doc. No. 7.02.01, latest effective issue
DA 42 NG Airplane Maintenance Manual, Doc. No. 7.02.15, latest effective issue.

I.3 Remarks

- a) All work must be done by a certified aircraft service station or a certified aircraft maintenance mechanic.
- b) All work, in particular if not described in this work instruction, must be done in accordance with the referenced maintenance manual.
- c) For conversion factors between SI units and US/Imperial units refer to AMM Chapter 02.
- d) In case of doubt, contact Diamond Aircraft Industries GmbH.

II DRAWINGS, SPECIAL TOOLS & MATERIALS

II.1 Drawings

None.

II.2 Special Tools

None.

II.3 Material

Set 1 if MÄM 42-1024 is **not** installed **without** OÄM 42-193 Air conditioning System

Quantity	Part Number	Description
3	D60-3313-11-00_01	Map Light Assy (MÄM 42-1024)
3	D60-3313-10-02_01	Map Light Seal (MÄM 42-1094)
1	D60-3313-10-01_01	Emergency Lever Seal (MÄM 42-1094)
1	D60-5200-71-00	Emergency Exit-Lever
1	1966-090	Lead Seal 8mm
0,5m	390-555	Copper Wire

Set 2 if MÄM 42-1024 is **not** installed **with** OÄM 42-193 Air conditioning System

Quantity	Part Number	Description
1	D60-3313-11-00_01	Map Light Assy (MÄM 42-1024)
1	D60-3313-10-02_01	Map Light Seal (MÄM 42-1094)
1	D60-3313-10-01_01	Emergency Lever Seal (MÄM 42-1094)
1	D60-5200-71-00X01	Emergency Exit-Lever(RACC)
1	1966-090	Lead Seal 8mm
0,5m	390-555	Copper Wire

Set 3 if MÄM 42-1024 **is** installed **with** OÄM 42-193 Air conditioning System


Quantity	Part Number	Description
1	D60-3313-10-02_01	Map Light Seal (MÄM 42-1094)
1	D60-3313-10-01_01	Emergency Lever Seal (MÄM 42-1094)
1	1966-090	Lead Seal 8mm
0,5m	390-555	Copper Wire

Set 4 if MÄM 42-1024 **is** installed **without** OÄM 42-193 Air conditioning System

Quantity	Part Number	Description
3	D60-3313-10-02_01	Map Light Seal (MÄM 42-1094)
1	D60-3313-10-01_01	Emergency Lever Seal (MÄM 42-1094)
1	1966-090	Lead Seal 8mm
0,5m	390-555	Copper Wire

Material is available from Diamond Aircraft Industries.

III INSTRUCTIONS

1	Pull the TAXI/MAP/ACL circuit breaker.
2	Remove the Map/Reading Light Assembly i.a.w AMM Section 33-10.
3	<p>Clean new Map Light Assy on sealing surface. Make sure to get no grease or silicone onto the bonding surfaces.</p> 

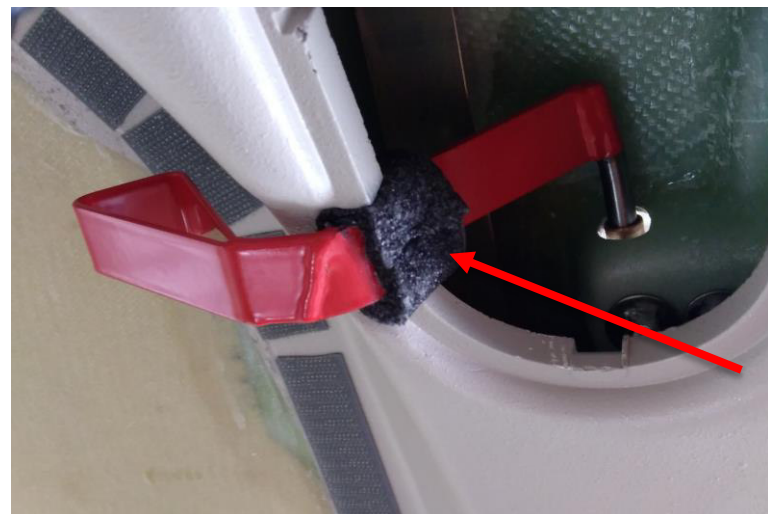
- 4 Remove the protective foil from the seal before installation on the new Map Light.
Install the Map Light Seal on the Map Light.



- 5 If MÄM 42-1024 was not installed, replace the Emergency Exit Lever.
Hold the pax door in closed position but not locked. Remove the Emergency Exit Lever.
Note: It is possible that the pax door hinge has shims installed.



- 6 Install the emergency lever seal on the emergency lever.
- Clean the emergency lever on sealing surface.
 - Make sure to get no grease or silicone on the bonding surfaces




- 7 Install the copper wire with lead seal on the emergency door lever.
Seal the wire holes in the fuselage from the inside with silicone or equivalent sealant.
Seal the cable grommet with silicone or equivalent sealant.



- 8 Position the mounting tabs inwards for installation.



9	Connect the electrical cables to the light assembly at the in-line connector.
10	<p>Position the Map light in to the fuselage and push up. Tighten the three bolts. Make sure not to lose any of the mounting tab in the fuselage frame.</p> 
11	Perform steps 2 to 4 and 8 to 10 for the other map lights if installed.
12	Reset the TAXI/MAP/ACL circuit breaker.
13	Clean working areas, check for foreign objects.
14	Check all altered, replaced, repaired parts for proper function.
15	Test all systems in working area for function.
16	Determine new empty weight and Center of Gravity.
17	Make all necessary entries in the airplane logs.