

SERVICE INFORMATION NO. SI 40-137/1

SUPERSEDES SERVICE INFORMATION SI 40-137

NOTE: SI's are used only:
1) To distribute information from DAI to our customers.
2) To distribute applicable information/documents from our suppliers to our customers with additional information.
Typically there is no revision service for SI's. Each new information or change of that will be sent along with a new SI.

I. TECHNICAL DETAILS

1.1 Airplanes affected:

All DA 40 aircraft equipped with GARMIN G1000 System, see also section 2.1.

All DA 40 F aircraft equipped with GARMIN G1000 System, see also section 2.1.

1.2 Subject:

GARMIN Terrain Data Alert No. 1351 Revision B

ATA-Code: 34-00

1.3 Reason:

GARMIN has issued Terrain Data Alert No 1351 Revision B describing anomalies when using Synthetic Vision Technology in Northwest Greenland. Terrain Data Alert No. 1351 Revision B includes the Terrain Data Base for 2015 (cycle 15T1).

1.4 Information:

For detailed technical information refer to GARMIN Terrain data Alert No. 1351 Revision B.

II. OTHERS

2.1 STC Information:

The GARMIN G1000 system and its associated systems, components and software are installed in the DA 40 and DA 40 F airplanes under one of the following known GARMIN STC:

- FAA STC No:
 - SA01254WI-D (G1000 System)
 - SA01444WI-D (G1000 System and GFC 700 A/P System with optional WAAS installation)
- EASA STC No.:
 - EASA.IM.A.S.01023 (G1000 System)

Additionally to the above mentioned STCs further GARMIN STCs may be approved.

The applicability of the attached GARMIN publication must be checked. For this purpose refer to the related airplane documentation, contact your responsible GARMIN Service Centre or your local authority.

2.2 Miscellaneous:

GARMIN Terrain Data Alert 1351 Revision B is attached to this Service Information.

In case of doubt contact GARMIN.

GARMIN[®]

Terrain Data Alert 1351

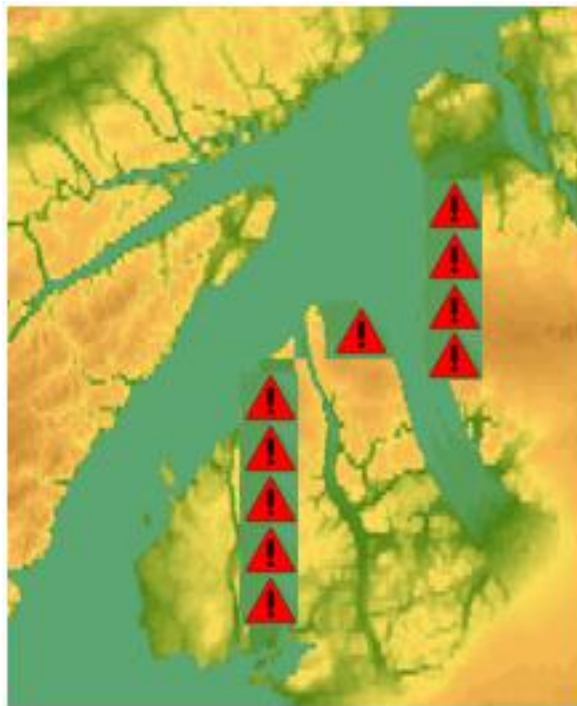
TO: Owners/Operators of all Garmin Aviation Products using a Terrain Database
DATE: 11 February 2015
SUBJECT: Anomalies in Northwest Greenland
REVISION B: Adjusted Affected Products

AFFECTED PRODUCTS

Terrain Database for 2015 (labeled cycle 15T1) and prior versions (cycles 11T1, 12T1, and 13T1).

AFFECTED AREAS

Refer to the figure below. The affected area is within a 55nm radius centered around N80° 50', W62° 30' located in the northwest region of Greenland.



 = Affected Area

The nearest airport (CYLT) is 60 nm north of the affected area.

Garmin requests that the flight crew report any observed discrepancies related to database information. These discrepancies could come in the form of an incorrect procedure, incorrectly identified terrain, obstacles, fixes, or any other displayed item used for navigation or communication in the air or on the ground. Go to FlyGarmin.com and select "[Aviation Data Error Report](#)."

DESCRIPTION

Anomalies may prevent TAWS/Terrain alerts and display an invalid terrain representation when using Synthetic Vision Technology (SVT) in the affected area.

PILOT ACTION

Pilots should utilize extra caution and maintain awareness of the surrounding terrain when flying in northwest Greenland.

RESOLUTION

This issue will be corrected in a future cycle release. Refer to the [Areas of Degraded Terrain Database Performance](#) on the Garmin website for a list of resolved Terrain Database issues.

WE STRONGLY URGE YOU TO MAKE THIS INFORMATION AVAILABLE TO APPROPRIATE CREW MEMBERS OR CUSTOMERS IMMEDIATELY!

Garmin requests that the flight crew report any observed discrepancies related to database information. These discrepancies could come in the form of an incorrect procedure, incorrectly identified terrain, obstacles, fixes, or any other displayed item used for navigation or communication in the air or on the ground. Go to FlyGarmin.com and select "[Aviation Data Error Report](#)."