

SERVICE INFORMATION NO. SI 40-089

NOTE: SI's are used only:
1) To distribute information from DAI to our customers.
2) To distribute applicable information/documents from our suppliers to our customers with additional information.
Typically there is no revision service for SI's. Each new information or change of that will be sent along with a new SI.

I. TECHNICAL DETAILS

1.1 Airplanes affected:

All DA 40 aircraft equipped with GARMIN G1000 System and SVT (Synthetic Vision Technology).

All DA 40 F aircraft equipped with GARMIN G1000 System and SVT (Synthetic Vision Technology).

1.2 Subject:

GARMIN: Service Advisory No. 0826 Rev. A
ATA-Code: 34-00

1.3 Reason:

GARMIN identified instances during which traffic symbols appear to be partially or fully obscured (or cropped) by other elements of the PFD display.

1.4 Information:

For detailed technical information see GARMIN Service Advisory No. 0826 Rev. A.

II. OTHERS

The GARMIN Service Advisory No. 0826 Rev. A is attached to this SI.

In case of doubt contact GARMIN.



SERVICE ADVISORY

NO.: 0826 Revision A

TO: All Garmin G1000 Customers

DATE: 01 August 2008

SUBJECT: Traffic Symbols on GDU Displays with SVT (Synthetic Vision Technology) may appear to be cropped.

AFFECTED PRODUCTS

All Garmin Integrated Flight Deck systems with Synthetic Vision Technology (SVT) installed are affected.

ISSUE

Garmin's Integrated Flight Deck Systems with SVT feature three-dimensional representations of traffic symbols which are shown on the PFD's main window. There are instances (described below) during which these traffic symbols appear to be partially or fully obscured (or cropped) by other elements of the PFD display.

DESCRIPTION

When SVT is enabled, the system displays three-dimensional representations of traffic symbols on the PFD's main window. Two cases where the traffic symbols are either partially or completely obscured by other display elements on the PFD are identified below:

- Case 1: Traffic symbols may appear partially or fully cropped when traffic is within 500 feet of the ground. This condition is more apparent when both host and target aircraft are in close proximity of each other.
- Case 2: Traffic symbols may appear partially or fully cropped when being displayed close to the upper-most (persistent sky) portion of the PFD.

© Copyright 2008
Garmin Ltd. or its subsidiaries
All Rights Reserved

Except as expressly provided herein, no part of this document may be reproduced, copied, transmitted, disseminated, downloaded or stored in any storage medium, for any purpose without the express prior written consent of Garmin. Garmin hereby grants permission to download a single copy of this document and of any revision to this document onto a hard drive or other electronic storage medium to be viewed and to print one copy of this document or of any revision hereto, provided that such electronic or printed copy of this document or revision must contain the complete text of this copyright notice and provided further that any unauthorized commercial distribution of this document or any revision hereto is strictly prohibited.

Case 1:

Garmin traffic symbols have a maximum edge-to-edge dimension of 500ft. The center of the symbol indicates the altitude of the corresponding aircraft, as shown in Figure 1 below.

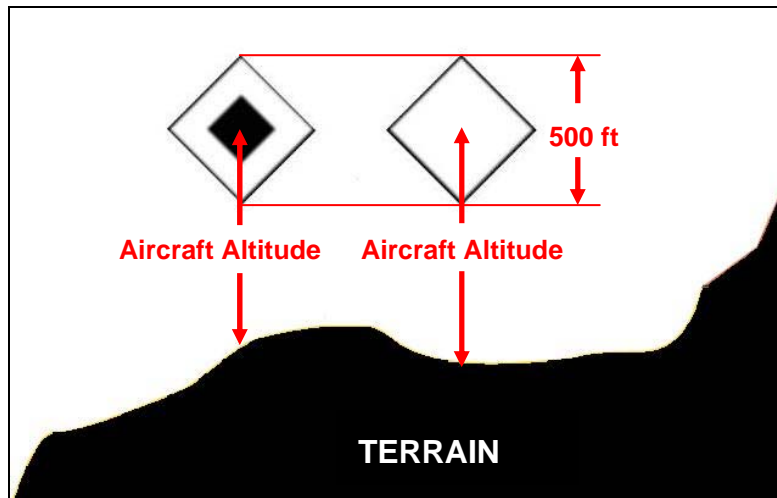


Figure 1 - SVT Traffic Symbol Size

Based on the depiction in Figure 1, it is apparent that the traffic symbol may be partially or completely cropped if the aircraft altitude is within approximately 500 feet of the ground. Examples of cropped traffic symbols are shown in Figure 2, below.



Figure 2 – Examples of Cropped Traffic Symbol

Case 2:

The upper portion of the PFD's main display window consists of a blue persistent sky band. This band is integrated as a safety feature to provide pilots with a clear visual reference to recover from extreme aircraft nose-down attitudes (see Figure 3). The band is displayed even when the aircraft is flying in non-extreme attitudes, including straight-and-level flight.

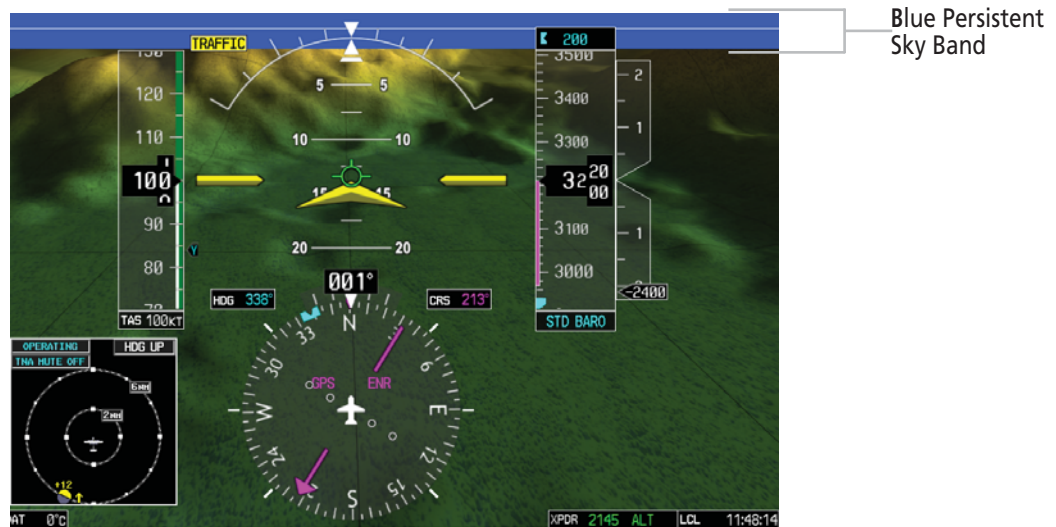


Figure 3 – Persistent Sky Band

If a traffic symbol (or a portion of it) is supposed to be displayed in the band reserved for persistent sky, it will appear to be partially or fully cropped, as shown in Figure 4.



Figure 4 – Traffic Symbol Cropped by Persistent Sky Band

Other points to consider regarding the appearance of Traffic symbols:

- Traffic symbols on the PFD are not depicted if the traffic is within 250 feet laterally of the aircraft's current location. This is to avoid depicting a symbol big enough to obscure a large portion of the display, and to limit screen clutter while flying in a traffic pattern.
- Traffic symbols displayed on the PFD are advisory only, and are provided to assist the pilot in visually acquiring the aircraft outside the cockpit. As such, the pilot should not maneuver the aircraft based solely on the PFD traffic display.
- Items depicted on the PFD that may obscure traffic symbols include: the selected altitude window, the baro setting window, the heading window, etc.
- Refer to the MFD traffic display for additional information and orientation regarding traffic.

RESOLUTION

Future software releases will further refine the SVT traffic symbols displayed on the PFD.