

OPTIONAL SERVICE BULLETIN NO. OSB 40-027 REV. 1
SUPERSEDES OSB 40-027 REV. 0

I TECHNICAL DETAILS

I.1 Category

Optional.

I.2 Airplanes Affected

Type: DA 40

S/N: 40.006 through 40.079, 40.081 through 40.083, and 40.201 and subsequent if the LASAR Ignition System is installed

I.3 Date of Effectivity

15 January 2021

I.4 Time of Compliance

At owner's discretion.

I.5 Subject

Installation of the Slick Start Ignition System.

I.6 Reason

The Slick Start Ignition System has been approved as an optional replacement of the LASAR system. This service bulletin describes the installation of the Slick Start Ignition System.

I.7 Concurrent Documents

None.

I.8 Approval

The technical information and instructions contained in this document relate to Design Change Advisory No. OAM 40-073, which has been approved as part of the type design.

I.9 Accomplishment/Instructions

See WI-OSB 40-027, latest effective issue.

I.10 Mass (Weight) and CG

The change in mass and CG is negligible.

II PLANNING INFORMATION

II.1 Material and Availability

See WI-OSB 40-027, latest effective issue.

II.2 Special Tools

None.

II.3 Labour Effort

Approximately 14 hours will be required to accomplish this service bulletin.

II.4 Credit

None.

II.5 Reference Documents

DA 40 Series Airplane Maintenance Manual, Doc. No. 6.02.01, latest effective issue.

III REMARKS

1. All work must be done by a certified aircraft service station or a certified aircraft maintenance mechanic.
2. All work, in particular which is not especially described in this service bulletin, must be done in accordance with the referenced maintenance manual.
3. Completion of all work must be recorded in the logbook.
4. In case of doubt, contact Diamond Aircraft Industries Inc.

**EXECUTION REPORT TO
SERVICE BULLETIN
OSB 40-027 REV. 1**

AIRPLANE INFORMATION

Airplane Serial Number	_____
Airplane Registration	_____
Airplane Operator	_____
Hours of Operation of Airplane	_____
No. of Landings	_____
Hours of Operation of Engine	_____
Typical Operation of Airplane	_____
	(private, club, training, other)

Date, Name, Signature

Please e-mail the completed form to Techpubs@diamondaircraft.com.

WORK INSTRUCTION WI-OSB 40-027 REV. 2
SUPERSEDES WI-OSB 40-027 REV. 1

I GENERAL INFORMATION

I.1 Subject

The optional replacement of the LASAR system with the Slick Start Ignition System.

I.2 Reference Documents

DA 40 Series Airplane Maintenance Manual, Doc. No. 6.02.01, latest effective issue.

I.3 Remarks

1. All work must be done by a certified aircraft service station or a certified aircraft maintenance mechanic.
2. All work, in particular which is not especially described in this work instruction, must be done in accordance with the referenced maintenance manual.
3. In case of doubt, contact Diamond Aircraft Industries Inc.

II DRAWINGS, SPECIAL TOOLS & MATERIALS

II.1 Drawings

DA4-9274-00-02, latest effective revision
DA4-9274-00-03, latest effective revision
DA4-9274-00-04, latest effective revision
D41-7406-00-00_02, latest effective revision

II.2 Special Tools

None.

II.3 Material

NOTE: When purchasing parts at Diamond Aircraft in Wiener Neustadt, order parts by the numbers given in parenthesis, if specified.

NOTE: Items 5, 6, and 7 are manufactured from 20 ft of M22759-16-22-9 cable.

Item	Part No.	Qty	Description
1	4370 (451030)	1	RH magneto
2	4347 (451020)	1	LH Magneto
3	68C19622 (L-68C19622)	1	Gear wheel
4	31C-12 (L-31C-12)	1	Stud
5	74101C22	1	Cable
6	74104A22	1	Cable
7	74105A22	1	Cable
8	2-520184-2	4	Faston
9	36160	2	Ring terminal
10	36154	4	Ring terminal
11	D02-08-RC54453	4	Solder sleeve

III INSTRUCTIONS

1. Check if the ignition key works properly before the installation of the Slick Start System.
2. Remove the engine cowlings. Refer to AMM Section 71-10.
3. Disconnect the main battery. Refer to AMM Section 24-31.
4. Remove the instrument panel cover. Refer to AMM Section 25-10.
5. Remove the ignition cables from the spark plugs and magnetos.
6. Remove the magnetos.
7. Remove the engine speed sensor from the RH magneto.
8. Remove the LASAR box.
9. Disconnect LASAR cables SP2, SP3, SP4, SP5, and SP6. Refer to Drawing DA4-9274-00-02.
10. Remove the gear wheel from the old RH magneto and install it on the new RH magneto (item 1) and secure it with a pin.
11. Install the new gear wheel (item 3) on the new LH magneto (item 2) and secure it with a pin.
12. Remove the connection flange and the stud from the LH magneto, and install the new stud (item 4).
13. Install the engine speed sensor in the RH magneto.
14. Install the magnetos, and adjust the timing.
15. Install the Slick Start unit. Refer to Drawing D41-7406-00-00_02.
16. Remove the T-piece from the MAP line, and install a straight piece.
17. Remove the IGNITION circuit breaker, and install a blind plug.
18. Remove cables 74102A16, 74102B16, 31001A22, and 31001B22. Refer to Drawing DA4-9274-00-02.
19. Install new cables (items 5 through 7). Refer to Drawing DA4-9274-00-03 or Drawing DA4-9274-00-04 (G1000 equipped aircraft).
20. Ensure a tight fit of all parts.
21. Remove the DPU.
22. Remove the lower cover of the DPU, and set the Jumper JP2 to position "A."
23. Reinstall the cover, and reinstall the DPU.
24. Remove the ignition switch. Refer to AMM Section 74-00.

25. Confirm the presence of a jumper (bus bar) between the GRD and R terminals on the ignition switch as shown in Figure 1, below.

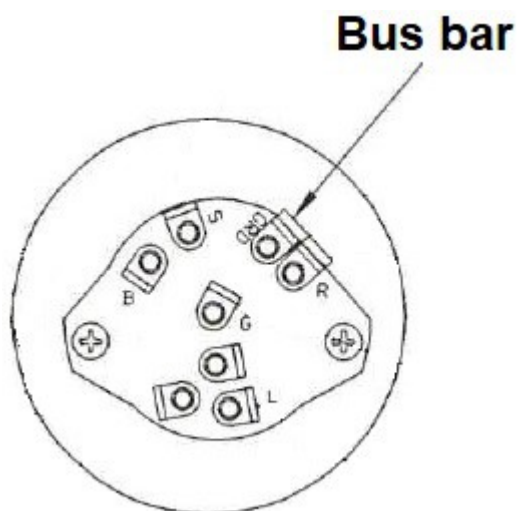


Figure 1. Required jumper (bus bar) on the reverse side of the ignition switch.

26. If there is no jumper (bus bar) as indicated in Figure 1, install a jumper wire between the upper two adjacent terminals (GRD and R).
27. Install the instrument panel cover. Refer to AMM Section 25-10.
28. Connect the main battery. Refer to AMM Section 24-31.
29. Install the engine cowlings. Refer to AMM Section 71-10.
30. Perform an engine ground run, and verify the proper operation of the ignition system and the RPM indicator.
31. Clean working areas, and check for foreign objects.
32. Make a logbook entry indicating that this service bulletin has been installed.
33. Submit the execution report to Techpubs@diamondaircraft.com.

Diamond Aircraft Industries
WORK INSTRUCTION
Model DA 40



To obtain satisfactory results, procedures specified in this service bulletin must be accomplished in accordance with accepted methods and current government regulations. Diamond Aircraft cannot be responsible for the quality of work performed in accomplishing the requirements of this service bulletin. Diamond Aircraft reserves the right to void continued warranty coverage in the area affected by this service bulletin if it is not incorporated.

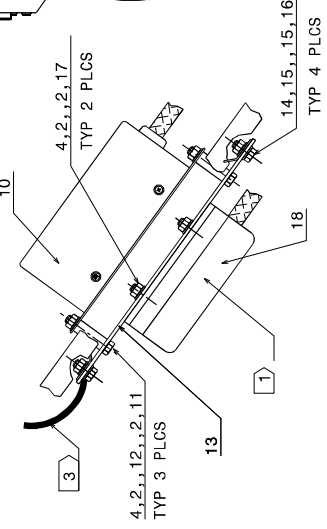
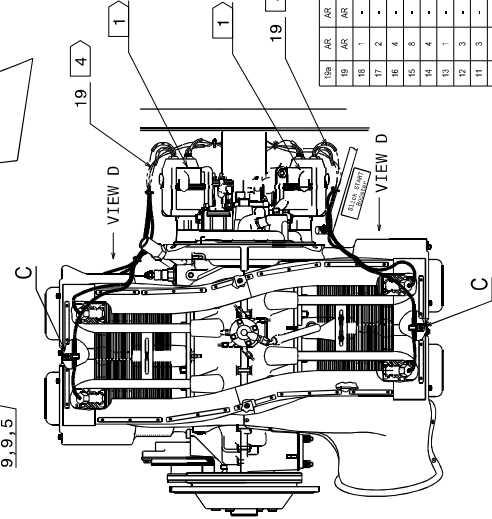
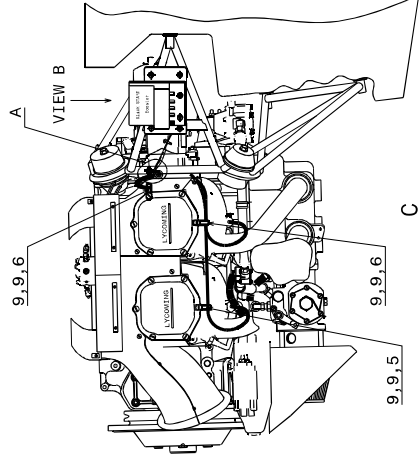
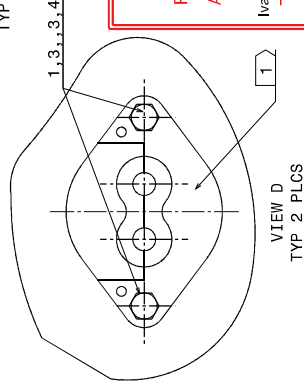
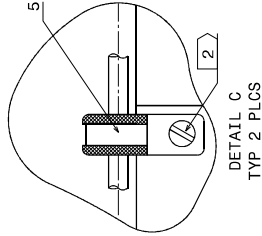
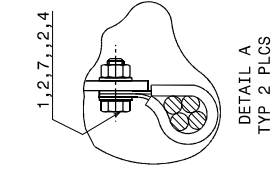
If you no longer own the aircraft to which this service bulletin applies, please forward it to the current owner, and send the name of the current owner to Diamond Aircraft at the address below.

Diamond Aircraft Industries Inc.
1560 Crumlin Sideroad, London, Ontario, Canada
N5V 1S2




Customer Support:
Phone: (519) 457-4041, Fax: (519) 457-4045
E-mail: support-canada@diamondaircraft.com

Technical Publications:
E-mail: Techpubs@diamondaircraft.com

REVISION			DATE
REV	SH	ZONE	DESCRIPTION
-	01	ALL	MANI 45-1072 NEW DRAWING, SUPERSEDES D41-7495-00-00_1



ITEM	QTY	QTR	PART NUMBER	DESCRIPTION	MATERIAL	TYPE	SIZE	SPECIFICATION
159	1	1	103737	HEXAGON HEAD BOLT	ALUMINUM	1/2"	1/2"	103737
160	1	1	103738	HEXAGON HEAD BOLT	ALUMINUM	1/2"	1/2"	103738
161	1	1	103739	HEXAGON HEAD BOLT	ALUMINUM	1/2"	1/2"	103739
162	1	1	103740	HEXAGON HEAD BOLT	ALUMINUM	1/2"	1/2"	103740
163	1	1	103741	HEXAGON HEAD BOLT	ALUMINUM	1/2"	1/2"	103741
164	1	1	103742	HEXAGON HEAD BOLT	ALUMINUM	1/2"	1/2"	103742
165	1	1	103743	HEXAGON HEAD BOLT	ALUMINUM	1/2"	1/2"	103743
166	1	1	103744	HEXAGON HEAD BOLT	ALUMINUM	1/2"	1/2"	103744
167	1	1	103745	HEXAGON HEAD BOLT	ALUMINUM	1/2"	1/2"	103745
168	1	1	103746	HEXAGON HEAD BOLT	ALUMINUM	1/2"	1/2"	103746
169	1	1	103747	HEXAGON HEAD BOLT	ALUMINUM	1/2"	1/2"	103747
170	1	1	103748	HEXAGON HEAD BOLT	ALUMINUM	1/2"	1/2"	103748
171	1	1	103749	HEXAGON HEAD BOLT	ALUMINUM	1/2"	1/2"	103749
172	1	1	103750	HEXAGON HEAD BOLT	ALUMINUM	1/2"	1/2"	103750
173	1	1	103751	HEXAGON HEAD BOLT	ALUMINUM	1/2"	1/2"	103751
174	1	1	103752	HEXAGON HEAD BOLT	ALUMINUM	1/2"	1/2"	103752
175	1	1	103753	HEXAGON HEAD BOLT	ALUMINUM	1/2"	1/2"	103753
176	1	1	103754	HEXAGON HEAD BOLT	ALUMINUM	1/2"	1/2"	103754
177	1	1	103755	HEXAGON HEAD BOLT	ALUMINUM	1/2"	1/2"	103755
178	1	1	103756	HEXAGON HEAD BOLT	ALUMINUM	1/2"	1/2"	103756
179	1	1	103757	HEXAGON HEAD BOLT	ALUMINUM	1/2"	1/2"	103757
180	1	1	103758	HEXAGON HEAD BOLT	ALUMINUM	1/2"	1/2"	103758
181	1	1	103759	HEXAGON HEAD BOLT	ALUMINUM	1/2"	1/2"	103759
182	1	1	103760	HEXAGON HEAD BOLT	ALUMINUM	1/2"	1/2"	103760
183	1	1	103761	HEXAGON HEAD BOLT	ALUMINUM	1/2"	1/2"	103761
184	1	1	103762	HEXAGON HEAD BOLT	ALUMINUM	1/2"	1/2"	103762
185	1	1	103763	HEXAGON HEAD BOLT	ALUMINUM	1/2"	1/2"	103763
186	1	1	103764	HEXAGON HEAD BOLT	ALUMINUM	1/2"	1/2"	103764
187	1	1	103765	HEXAGON HEAD BOLT	ALUMINUM	1/2"	1/2"	103765
188	1	1	103766	HEXAGON HEAD BOLT	ALUMINUM	1/2"	1/2"	103766
189	1	1	103767	HEXAGON HEAD BOLT	ALUMINUM	1/2"	1/2"	103767
190	1	1	103768	HEXAGON HEAD BOLT	ALUMINUM	1/2"	1/2"	103768
191	1	1	103769	HEXAGON HEAD BOLT	ALUMINUM	1/2"	1/2"	103769
192	1	1	103770	HEXAGON HEAD BOLT	ALUMINUM	1/2"	1/2"	103770
193	1	1	103771	HEXAGON HEAD BOLT	ALUMINUM	1/2"	1/2"	103771
194	1	1	103772	HEXAGON HEAD BOLT	ALUMINUM	1/2"	1/2"	103772
195	1	1	103773	HEXAGON HEAD BOLT	ALUMINUM	1/2"	1/2"	103773
196	1	1	103774	HEXAGON HEAD BOLT	ALUMINUM	1/2"	1/2"	103774
197	1	1	103775	HEXAGON HEAD BOLT	ALUMINUM	1/2"	1/2"	103775
198	1	1	103776	HEXAGON HEAD BOLT	ALUMINUM	1/2"	1/2"	103776
199	1	1	103777	HEXAGON HEAD BOLT	ALUMINUM	1/2"	1/2"	103777
200	1	1	103778	HEXAGON HEAD BOLT	ALUMINUM	1/2"	1/2"	103778
201	1	1	103779	HEXAGON HEAD BOLT	ALUMINUM	1/2"	1/2"	103779
202	1	1	103780	HEXAGON HEAD BOLT	ALUMINUM	1/2"	1/2"	103780
203	1	1	103781	HEXAGON HEAD BOLT	ALUMINUM	1/2"	1/2"	103781
204	1	1	103782	HEXAGON HEAD BOLT	ALUMINUM	1/2"	1/2"	103782
205	1	1	103783	HEXAGON HEAD BOLT	ALUMINUM	1/2"	1/2"	103783
206	1	1	103784	HEXAGON HEAD BOLT	ALUMINUM	1/2"	1/2"	103784
207	1	1	103785	HEXAGON HEAD BOLT	ALUMINUM	1/2"	1/2"	103785
208	1	1	103786	HEXAGON HEAD BOLT	ALUMINUM	1/2"	1/2"	103786
209	1	1	103787	HEXAGON HEAD BOLT	ALUMINUM	1/2"	1/2"	103787
210	1	1	103788	HEXAGON HEAD BOLT	ALUMINUM	1/2"	1/2"	103788
211	1	1	103789	HEXAGON HEAD BOLT	ALUMINUM	1/2"	1/2"	103789
212	1	1	103790	HEXAGON HEAD BOLT	ALUMINUM	1/2"	1/2"	103790
213	1	1	103791	HEXAGON HEAD BOLT	ALUMINUM	1/2"	1/2"	103791
214	1	1	103792	HEXAGON HEAD BOLT	ALUMINUM	1/2"	1/2"	103792
215	1	1	103793	HEXAGON HEAD BOLT	ALUMINUM	1/2"	1/2"	103793
216	1	1	103794	HEXAGON HEAD BOLT	ALUMINUM	1/2"	1/2"	103794
217	1	1	103795	HEXAGON HEAD BOLT	ALUMINUM	1/2"	1/2"	103795
218	1	1	103796	HEXAGON HEAD BOLT	ALUMINUM	1/2"	1/2"	103796
219	1	1	103797	HEXAGON HEAD BOLT	ALUMINUM	1/2"	1/2"	103797
220	1	1	103798	HEXAGON HEAD BOLT	ALUMINUM	1/2"	1/2"	103798
221	1	1	103799	HEXAGON HEAD BOLT	ALUMINUM	1/2"	1/2"	103799
222	1	1	103800	HEXAGON HEAD BOLT	ALUMINUM	1/2"	1/2"	103800
223	1	1	103801	HEXAGON HEAD BOLT	ALUMINUM	1/2"	1/2"	103801
224	1	1	103802	HEXAGON HEAD BOLT	ALUMINUM	1/2"	1/2"	103802
225	1	1	103803	HEXAGON HEAD BOLT	ALUMINUM	1/2"	1/2"	103803
226	1	1	103804	HEXAGON HEAD BOLT	ALUMINUM	1/2"	1/2"	103804
227	1	1	103805	HEXAGON HEAD BOLT	ALUMINUM	1/2"	1/2"	103805
228	1	1	103806	HEXAGON HEAD BOLT	ALUMINUM	1/2"	1/2"	103806
229	1	1	103807	HEXAGON HEAD BOLT	ALUMINUM	1/2"	1/2"	103807
230	1	1	103808	HEXAGON HEAD BOLT	ALUMINUM	1/2"	1/2"	103808
231	1	1	103809	HEXAGON HEAD BOLT	ALUMINUM	1/2"	1/2"	103809
232	1	1	103810	HEXAGON HEAD BOLT	ALUMINUM	1/2"	1/2"	103810
233	1	1	103811	HEXAGON HEAD BOLT	ALUMINUM	1/2"	1/2"	103811
234	1	1	103812	HEXAGON HEAD BOLT	ALUMINUM	1/2"	1/2"	103812
235	1	1	103813	HEXAGON HEAD BOLT	ALUMINUM	1/2"	1/2"	103813
236	1	1	103814	HEXAGON HEAD BOLT	ALUMINUM	1/2"	1/2"	103814
237	1	1	103815	HEXAGON HEAD BOLT	ALUMINUM	1/2"	1/2"	103815
238	1	1	103816	HEXAGON HEAD BOLT	ALUMINUM	1/2"	1/2"	103816
239	1	1	103817	HEXAGON HEAD BOLT	ALUMINUM	1/2"	1/2"	103817
240	1	1	103818	HEXAGON HEAD BOLT	ALUMINUM	1/2"	1/2"	103818
241	1	1	103819	HEXAGON HEAD BOLT	ALUMINUM	1/2"	1/2"	103819
242	1	1	103820	HEXAGON HEAD BOLT	ALUMINUM	1/2"	1/2"	103820
243	1	1	103821	HEXAGON HEAD BOLT	ALUMINUM	1/2"	1/2"	103821
244	1	1	103822	HEXAGON HEAD BOLT	ALUMINUM	1/2"	1/2"	103822
245	1	1	103823	HEXAGON HEAD BOLT	ALUMINUM	1/2"	1/2"	103823
246	1	1	103824	HEXAGON HEAD BOLT	ALUMINUM	1/2"	1/2"	103824
247	1	1	103825	HEXAGON HEAD BOLT	ALUMINUM	1/2"	1/2"	103825
248	1	1	103826	HEXAGON HEAD BOLT	ALUMINUM	1/2"	1/2"	103826
249	1	1	103827	HEXAGON HEAD BOLT	ALUMINUM	1/2"	1/2"	103827
250	1	1	103828	HEXAGON HEAD BOLT	ALUMINUM	1/2"	1/2"	103828
251	1	1	103829	HEXAGON HEAD BOLT	ALUMINUM	1/2"	1/2"	103829
252	1	1	103830	HEXAGON HEAD BOLT	ALUMINUM	1/2"	1/2"	103830
253	1	1	103831	HEXAGON HEAD BOLT	ALUMINUM	1/2"	1/2"	103831
254	1	1	103832	HEXAGON HEAD BOLT	ALUMINUM	1/2"	1/2"	103832
255	1	1	103833	HEXAGON HEAD BOLT	ALUMINUM	1/2"	1/2"	103833
256	1	1	103834	HEXAGON HEAD BOLT	ALUMINUM	1/2"	1/2"	103834
257	1	1	103835	HEXAGON HEAD BOLT	ALUMINUM	1/2"	1/2"	103835
258	1	1	103836	HEXAGON HEAD BOLT	ALUMINUM	1/2"	1/2"	103836
259	1	1	103837	HEXAGON HEAD BOLT	ALUMINUM	1/2"	1/2"	103837
260	1	1	103838	HEXAGON HEAD BOLT	ALUMINUM	1/2"	1/2"	103838
261	1	1	103839	HEXAGON HEAD BOLT	ALUMINUM	1/2"	1/2"	103839
262	1	1	103840	HEXAGON HEAD BOLT	ALUMINUM	1/2"	1/2"	103840
263	1	1	103841	HEXAGON HEAD BOLT	ALUMINUM	1/2"	1/2"	103841
264	1	1	103842	HEXAGON HEAD BOLT	ALUMINUM	1/2"	1/2"	103842
265	1	1	103843	HEXAGON HEAD BOLT	ALUMINUM	1/2"	1/2"	103843
266	1	1	103844	HEXAGON HEAD BOLT	ALUMINUM	1/2"	1/2"	103844
267	1	1	103845	HEXAGON HEAD BOLT	ALUMINUM	1/2"	1/2"	103845
268	1	1	103846	HEXAGON HEAD BOLT	ALUMINUM	1/2"	1/2"	103846
269	1	1	103847	HEXAGON HEAD BOLT	ALUMINUM	1/2"	1/2"	103847
270	1	1	103848	HEXAGON HEAD BOLT	ALUMINUM	1/2"	1/2"	103848
271	1	1	103849	HEXAGON HEAD BOLT	ALUMINUM	1/2"	1/2"	103849
272	1	1	103850	HEXAGON HEAD BOLT	ALUMINUM	1/2"	1/2"	103850
273	1	1	103851	HEXAGON HEAD BOLT	ALUMINUM	1/2"	1/2"	103851
274	1	1	103852	HEXAGON HEAD BOLT	ALUMINUM	1/2"	1/2"	103852
275	1	1	103853	HEXAGON HEAD BOLT	ALUMINUM	1/2"	1/2"	103853
276	1	1	103854	HEXAGON HEAD BOLT	ALUMINUM	1/2"	1/2"	103854
277	1	1	103855	HEXAGON HEAD BOLT	ALUMINUM	1/2"	1/2"	103855
278	1	1	103856	HEXAGON HEAD BOLT	ALUMINUM	1/2"	1/2"	103856
279	1	1	103857	HEXAGON HEAD BOLT	ALUMINUM	1/2"	1/2"	103857
280	1	1	103858	HEXAGON HEAD BOLT	ALUMINUM	1/2"	1/2"	103858
281	1	1	103859	HEXAGON HEAD BOLT	ALUMINUM	1/2"	1/2"	103859
282	1	1	103860	HEXAGON HEAD BOLT	ALUMINUM	1/2"	1/2"	103860
283	1	1	103861	HEXAGON HEAD BOLT	ALUMINUM	1/2"	1/2"	103861
284	1	1	103862	HEXAGON HEAD BOLT	ALUMINUM	1/2"	1/2"	103862
285	1	1	103863	HEXAGON HEAD BOLT	ALUMINUM	1/2"	1/2"	103863
286	1	1	103864	HEXAGON HEAD BOLT	ALUMINUM	1/2"	1/2"	103864
287	1	1	103865	HEXAGON HEAD BOLT	ALUMINUM	1/2"	1/2"	103865
288	1	1	103866	HEXAGON HEAD BOLT	ALUMINUM	1/2"	1/2"	103866
289	1	1	103867	HEXAGON HEAD BOLT	ALUMINUM	1/2"	1/2"	103867
290	1	1	103868	HEXAGON HEAD BOLT	ALUMINUM	1/2"	1/2"	103868
291	1	1	103869	HEXAGON HEAD BOLT	ALUMINUM	1/2"	1/2"	103869
292	1	1	103870	HEXAGON HEAD BOLT	ALUMINUM	1/2"	1/2"	103870
293	1	1	103871	HEXAGON HEAD BOLT	ALUMINUM	1/2"	1/2"	103871
294	1	1	103872	HEXAGON HEAD BOLT	ALUMINUM	1/2"	1/2"	103872
295	1	1	103873	HEXAGON HEAD BOLT	ALUMINUM	1/2"	1/2"	103873
296	1	1	103874	HEXAGON HEAD BOLT	ALUMINUM	1/2"	1/2"	103874
297	1	1	103875	HEXAGON HEAD BOLT	ALUMINUM	1/2"	1/2"	103875
298	1	1	103876	HEXAGON HEAD BOLT	ALUMINUM	1/2"	1/2"	103876
299	1	1	103877	HEXAGON HEAD BOLT	ALUMINUM	1/2"	1/2"	103877
300	1	1	103878	HEXAGON HEAD BOLT	ALUMINUM	1/2"	1/2"	103878
301	1	1	103879	HEXAGON HEAD BOLT	ALUMINUM	1/2"	1/2"	103879
302	1	1	103880	HEXAGON HEAD BOLT	ALUMINUM	1/2"	1/2"	103880
303	1	1	103881	HEXAGON HEAD BOLT	ALUMINUM	1/2"	1/2"	103881
304	1	1	103882	HEXAGON HEAD BOLT	ALUMINUM	1/2"	1/2"	103882
305	1	1	103883	HEXAGON HEAD BOLT	ALUMINUM	1/2"	1/2"	103883
306	1	1	103884	HEXAGON HEAD BOLT	ALUMINUM	1/2"	1/2"	103884
307	1	1	103885	HEXAGON HEAD BOLT	ALUMINUM	1/2"	1/2"	103885
308	1	1	103886	HEXAGON HEAD BOLT	ALUMINUM	1/2"	1/2"	103886
309	1	1</						

IDENTIFICATION MARKINGS 		NAME / SKETCH DATE Title: IGNITION START ASSIST INSTALLATION Date: 2013/03/20 By: Matt Gorkowski		PROJECT DA-40		Diamond Aircraft Industries 1550 Cumlin-Soleman, London Ontario, Canada, N5Y 1S2	
METRIC FIRST ANGLE PROJECTION 	UNIFORMITY CLASSIFICATION NONE	INTERCHANGEABLE PART YES <input checked="" type="checkbox"/> NO <input type="checkbox"/>	CHECKED: Date: 2013/03/20 By: Matt Gorkowski	DWG NO. DA1-7406-00-00_02	REV 01	1550 Cumlin-Soleman, London Ontario, Canada, N5Y 1S2	
IF NOT OTHERWISE SPECIFIED, THIS DRAWING IS PRODUCED USING SOFTWARE (DATE: 1992) ISO 278-smk	RELEASED Date: 2013/03/20 By: Matt Gorkowski	SCALE 1:1	DATE 2013/03/20	DWG NO. DA1-7406-00-00_02	REV 01	1550 Cumlin-Soleman, London Ontario, Canada, N5Y 1S2	
DIMENSIONS FIRST ANGLE PROJECTION 	UNIFORMITY CLASSIFICATION NONE	INTERCHANGEABLE PART YES <input checked="" type="checkbox"/> NO <input type="checkbox"/>	CHECKED: Date: 2013/03/20 By: Matt Gorkowski	DWG NO. DA1-7406-00-00_02	REV 01	1550 Cumlin-Soleman, London Ontario, Canada, N5Y 1S2	
IF NOT OTHERWISE SPECIFIED, THIS DRAWING IS PRODUCED USING SOFTWARE (DATE: 1992) ISO 278-smk	RELEASED Date: 2013/03/20 By: Matt Gorkowski	SCALE 1:1	DATE 2013/03/20	DWG NO. DA1-7406-00-00_02	REV 01	1550 Cumlin-Soleman, London Ontario, Canada, N5Y 1S2	

4	3	2	1	Confidential
---	---	---	---	--------------

FLAG NOTE:

- 1 COMPONENTS SUPPLIED WITH ENGINE.
- 2 HARDWARE FOUND ON BAFFLE INSTALLATION DRAWING.
- 3 REFER TO POWERPLANT CONSTRUCTION DRAWING FOR BONDING CABLE.
- 4 PROTECT IGNITION WIRES USING SPIRAL WRAP (ITEM 19) WHERE REQUIRED AND SECURE WITH CABLE TIES (ITEM 8) AS REQUIRED TO PREVENT CHAFING.

RED LINE CORRECTION

Revision: A

Approving Engineer:

Ivan Kubrak

Signature

Date

IGNITION START ASSIST INSTALLATION

DAIC	DAWG, NO.	D41-7406-00-00_02	REV	01
DAIC	DAWG, NO.	D41-7406-00-00_02	REV	01

	1	Confidential
--	---	--------------

F

E

D

C

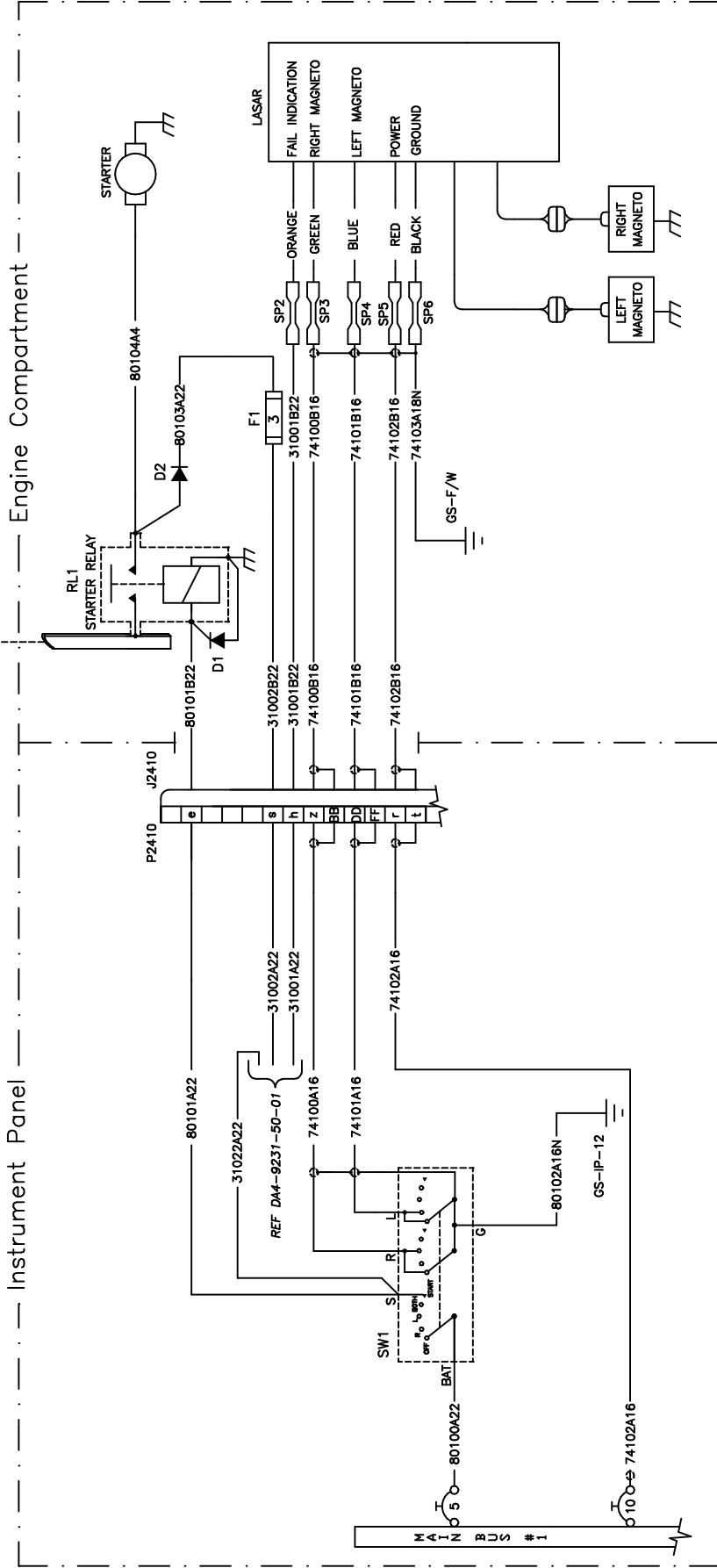
B

A

REF DA4-9224-30-01

Instrument Panel

Engine Compartment

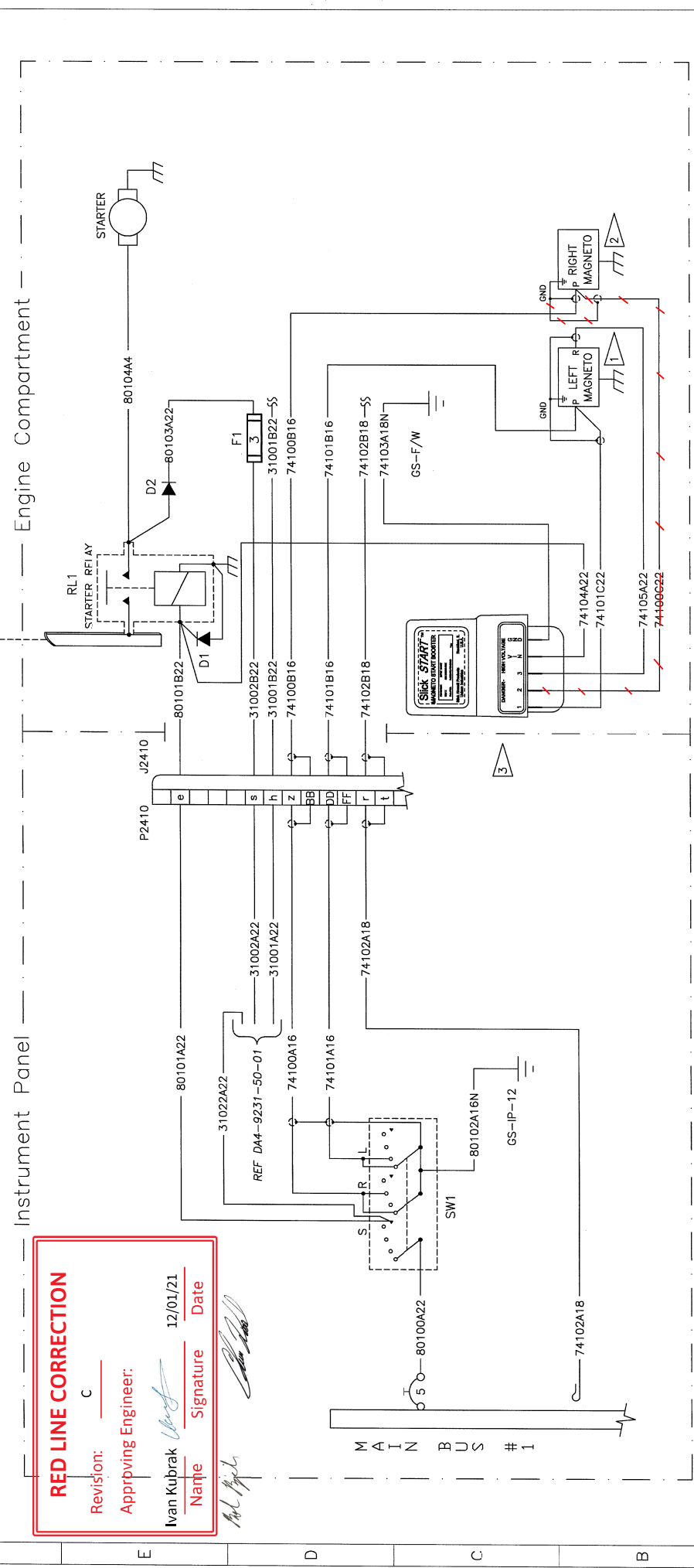


QTY	ITEM	PART NUMBER			DESCRIPTION	MATERIAL TYPE	H.T.			SPECIFICATION	SUPPLIER
		A	D	E			Size:	Scale:	First Angle		
REVISION											
REV#											
DATE		13.09.99	25.09.00	02.03.01							
DRAWN		P.KOPALA	KOWARSCH	STURGE							
CHECK											
CHECK DATE											
STRESS											
STRESS DATE											
APPROVAL											
APPROVAL DATE											

Diamond Aircraft		Do Not Scale Drawing	
This Drawing is the Property of Diamond Aircraft. Unauthorised Reproduction or Distribution is Strictly Prohibited.		NEXT ASSEMBLY:	
		DA4-9200-00-00	
		DA4-9274-00-02	
		1/1	
		N/A	

Rev	SH	Zone	Description	Date
C	01	B3	Removed wire 74100C22	05.01.2021

REF DA4-9224-30-01



RED LINE CORRECTION

Revision: C 12/01/21

Apprving Engineer: Ivan Kubrak Signature: [Signature] Date: 12/01/21

QTY	ITEM	PART NUMBER	DESCRIPTION	MATERIAL TYPE	H.T.	MATERIAL SIZE	SUPPLIER
REVISION	04M 40-073	04M 40-073	04M 40-073	04M 40-073	04M 40-073	04M 40-073	04M 40-073
DATE	05.02.01	20.06.01	12.07.01	05.02.01	20.06.01	12.07.01	05.02.01
DRAWN	KOWARSCHE	KOWARSCHE	KOWARSCHE	KOWARSCHE	KOWARSCHE	KOWARSCHE	KOWARSCHE
CHECK	CHECK DATE	CHECK DATE	CHECK DATE	CHECK DATE	CHECK DATE	CHECK DATE	CHECK DATE
STRESS	STRESS DATE	STRESS DATE	STRESS DATE	STRESS DATE	STRESS DATE	STRESS DATE	STRESS DATE
APPROVAL	APPROVAL DATE	APPROVAL DATE	APPROVAL DATE	APPROVAL DATE	APPROVAL DATE	APPROVAL DATE	APPROVAL DATE

- SS - INDICATES LASER WIRE CUT
- 1 LEFT MAGNETO W/ SLICKSTART - P/N 4347
- 2 RIGHT MAGNETO W/ SLICKSTART - P/N 4370
- 3 SS 1001 SLICK START, MAGNETO START BOOSTER



This Drawing is the Property of Diamond Aircraft. Unauthorized Reproduction or Disclosure to Third Parties is Prohibited.

DRAWING NUMBER: DA4-9200-00-00

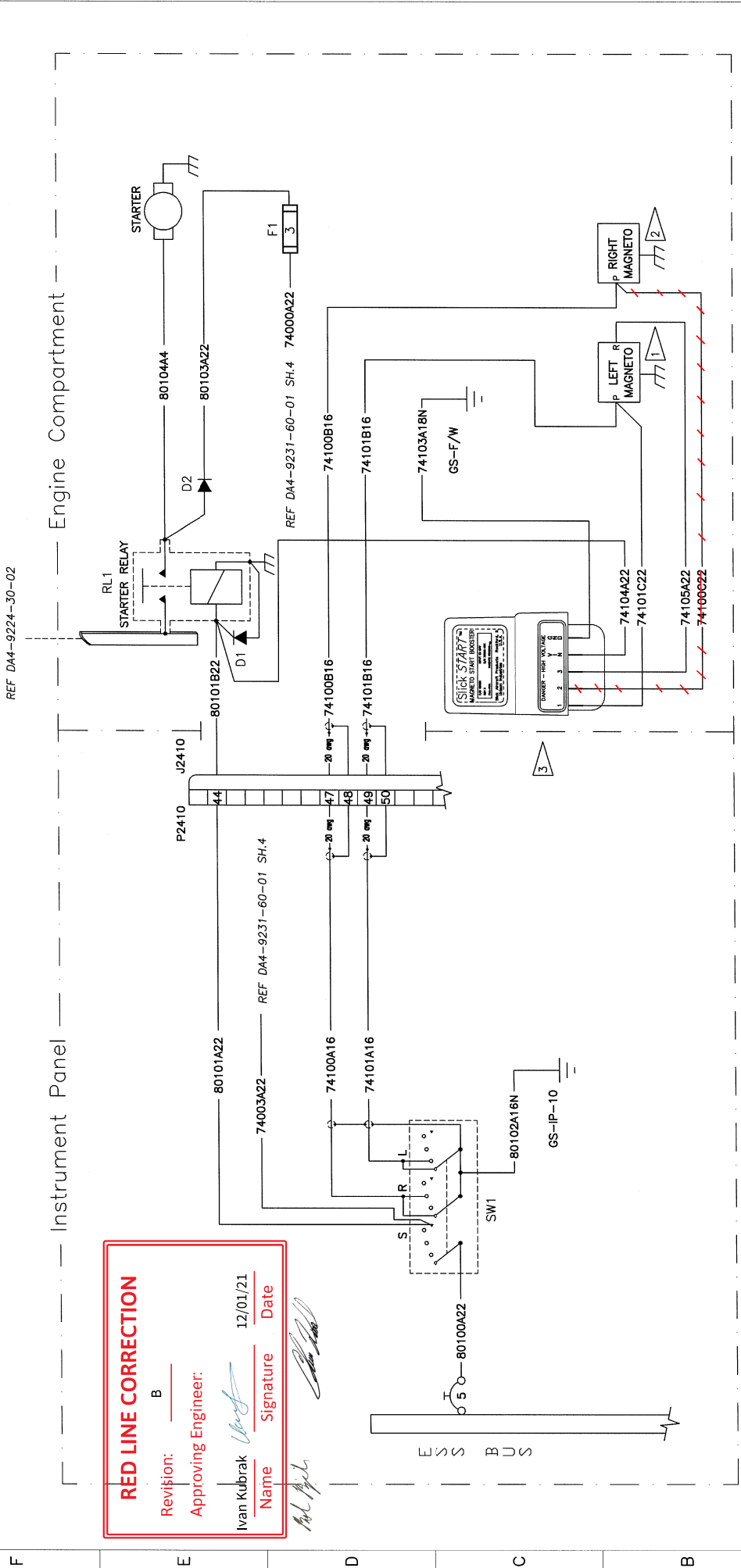
REPLACES DWG.# N/A

Do Not Scale Drawing

SHEET: 1/1

Rev	SH	Zone	Description	Date
B	01	B3	Removed wire 74100C22.	06.01.2021

8	7	6	5	4	3	2	1
---	---	---	---	---	---	---	---



RED LINE CORRECTION

Revision: B 12/01/21

Approving Engineer: Ivan Kubrak Signature: [Signature] Date: 12/01/21

QTY	ITEM	PART NUMBER	DESCRIPTION	MATERIAL TYPE	H.T.	MATERIAL SIZE	SPECIFICATION	SUPPLIER
1	LEFT MAGNETO W/ SLICKSTART - P/N 4347	QAM 40-431						
2	RIGHT MAGNETO W/ SLICKSTART - P/N 4370	QAM 40-431						
3	SS 1001 SLICK START, MAGNETO START BOOSTER	QAM 40-431						

REVISION	DATE	DRAWN	CHECK	CHECK DATE	STRESS DATE	APPROVAL	APPROVAL DATE
RN#	03.06.03	03.06.03	03.06.03	03.06.03	03.06.03	03.06.03	03.06.03
DATE	03.06.03	03.06.03	03.06.03	03.06.03	03.06.03	03.06.03	03.06.03
DRAWN	STURGE	STURGE	STURGE	STURGE	STURGE	STURGE	STURGE
CHECK	STURGE	STURGE	STURGE	STURGE	STURGE	STURGE	STURGE
CHECK DATE							
STRESS DATE							
APPROVAL							
APPROVAL DATE							

QTY	ITEM	PART NUMBER	DESCRIPTION	MATERIAL TYPE	H.T.	MATERIAL SIZE	SPECIFICATION	SUPPLIER
1	LEFT MAGNETO W/ SLICKSTART - P/N 4347	QAM 40-431						
2	RIGHT MAGNETO W/ SLICKSTART - P/N 4370	QAM 40-431						
3	SS 1001 SLICK START, MAGNETO START BOOSTER	QAM 40-431						

QTY	ITEM	PART NUMBER	DESCRIPTION	MATERIAL TYPE	H.T.	MATERIAL SIZE	SPECIFICATION	SUPPLIER
1	LEFT MAGNETO W/ SLICKSTART - P/N 4347	QAM 40-431						
2	RIGHT MAGNETO W/ SLICKSTART - P/N 4370	QAM 40-431						
3	SS 1001 SLICK START, MAGNETO START BOOSTER	QAM 40-431						