

SERVICE BULLETIN



Service Bulletin No.: DAC1-76-01 Rev 1

Date Issued: 29 January, 1999

Title: Mixture Cable Kinking

Page: 1 of 3

DIAMOND AIRCRAFT HIGHLY RECOMMENDS COMPLIANCE

- 1. ATA Code:** 7611
- 2. Effectivity:** DA20-C1 aircraft.
- 3. General:** This service bulletin addresses the installation of a mixture cable support to reduce the possibility of the mixture cable kinking
- 4. Compliance:** Compliance with this service bulletin is highly recommended.
- 5. Approval:** Engineering data referenced or contained in this service bulletin is approved as part of the type design.

- 6. Labour:** Approximately 3 hours will be required to accomplish this service bulletin.
This estimate is for direct labor performed by a technician and it does not include setup, planning, familiarization, cure time, part fabrication or tool acquisition.

7. Material:	Part Number	Description	Qty
	22-7611-21-01	Mixture control cable support	1
	503062-01	Mixture control cable core	1
	Materials required but not supplied: procure locally.		
	Loctite 242	Thread Locker	A/R

- 8. Special Tools:** N/A

- 9. References:** DA20 Maintenance Manual, Document number DA201-C1.

10. Accomplishment Instructions:

- 10.1** Disconnect the mixture control cable core from the mixture lever on the fuel injector by performing steps 1-4 in section 3 A, "Remove the Mixture Control Bowden Cable", chapter 76-00 of the maintenance manual.
- 10.2** Remove the control panel covers in the center console.

Refer to maintenance manual chapter 31-10 figure 2 and follow instructions in section 3 A, "Remove the Control Panels in the Center Console".
- 10.3** Move mixture control lever to Idle Cutoff position
- 10.4** Disconnect the cable core end of the mixture cable from the mixture lever by loosening the swivel attachment (see figure 1).

SERVICE BULLETIN



Service Bulletin No.: DAC1-76-01 Rev 1

Date Issued: 29 January, 1999

Title: Mixture Cable Kinking

Page: 2 of 3

- 10.5** Remove the old cable core from its sheath and install the new cable core in its place.
- 10.6** Install mixture control cable support over cable core end, threaded end first (see figure 1).
- 10.7** Apply Loctite 242 to control cable threads.
- 10.8** Screw the support onto the control cable threaded end. Tighten with 8mm open ended wrench.
- 10.9** Reconnect cable core end and tighten swivel attachment.
- 10.10** Reconnect cable core end at fuel injector.
- 10.11** Move lever to Full Rich and back to Idle Cutoff to ensure smoothness of operation. Check that mixture control lever does not contact support.
- 10.12** Check mixture cable rigging according to maintenance manual chapter 76-00 section 5 B, "Mixture Control Range of Movement Test".
- 10.13** Install the control panel covers in the center console.

Refer to maintenance manual chapter 31-10 figure 2 and follow instructions in section 3 B, "Install the Control Panels in the Center Console".
- 10.14** Perform steps 16-21 in section 3 B, "Install the Mixture Control Bowden Cable", chapter 76-00 of the maintenance manual.

11. Weight and Balance:

The weight and balance is not affected by this Service Bulletin.

12. Availability:

Contact Diamond Aircraft.

To obtain satisfactory results, procedures specified in this service bulletin must be accomplished in accordance with accepted methods and current government regulations. Diamond Aircraft Industries Inc. cannot be responsible for the quality of work performed in accomplishing the requirements of this service bulletin. Diamond Aircraft reserves the right to void continued warranty coverage in the area affected by this Service Bulletin if it is not incorporated. If you no longer own the aircraft to which this service bulletin applies, please forward it to the current owner and send the name of the current owner to Diamond Aircraft Industries, Inc., at the address below

Diamond Aircraft Industries Inc. 1560 Crumlin Sideroad, London, Ontario, Canada N5V 1S2
Phone: (519) 457-4041 Fax: (519) 457-4045

SERVICE BULLETIN



Service Bulletin No.: DAC1-76-01 Rev 1

Date Issued: 29 January, 1999

Title: Mixture Cable Kinking

Page: 3 of 3

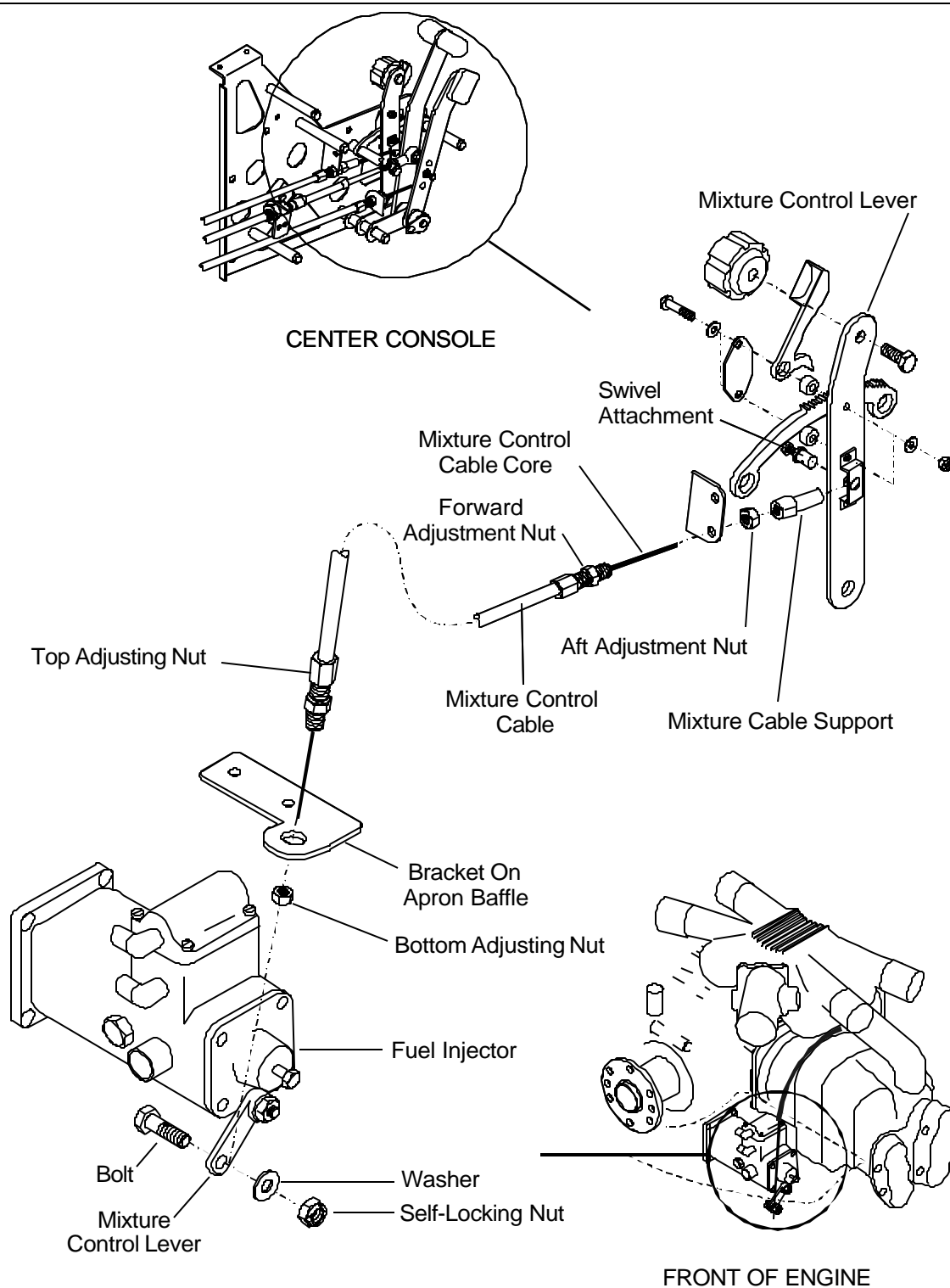


Figure 1