

# SERVICE BULLETIN



**Diamond**  
AIRCRAFT

Service Bulletin No.: DA20-77-01, Rev. 0

Date Issued: July 30, 1996

Title: Tachometer, Cable Assembly, Inspection.

Page: 1 of 3

1. ATA Code: 7710

## Planning Information:

2. Effectivity: All DA Katana's up to Serial Number 10174.

3. General: Excessive Tachometer failures such as; incorrect readings, sticking needle, and total instrument failure were primarily attributed to a manufacturing tolerance of the Tachometer Drive Cable.

4. Compliance: Diamond Aircraft Industries recommends compliance with this service bulletin if repetitive premature failures of the Tachometer have been experienced.

5. Approval: Not Applicable

6. Labor: Approximately 1 Man-hour will be required to accomplish this modification.

7. Material:	Description:	Part Number:	Qty:
	Identification Sleeve.	20-7100-05-02	1

8. Kit cost: The above material may be ordered as Kit DA20-77-01MK. Contact Diamond Aircraft for price and availability.

9. Special Tools: 3/4" Crowfoot Wrench.

10. References: DA 20 Katana Maintenance Manual.

## 11. Accomplishment Instructions:

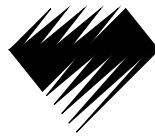
### 11.1 Fixed Provisions Installation

11.1.1 Remove the Engine Cowling and the Instrument Panel Cover.

11.1.2 Inspect the Tachometer Drive Cable Assembly for an identification sleeve stating part number, 20 7100-05-01. If this sleeve is installed then disregard the following procedure and reinstall the Cowling and the Instrument Panel Cover. If the sleeve is not installed follow the instructions below.

11.1.3 Disconnect the Cable from the Tachometer and from the Engine.

# SERVICE BULLETIN



**Diamond**  
AIRCRAFT

Service Bulletin No.: DA20-77-01, Rev. 0

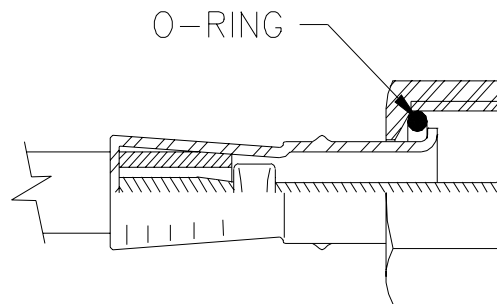
Date Issued: July 30, 1996

Title: Tachometer, Cable Assembly, Inspection.

Page: 2 of 3

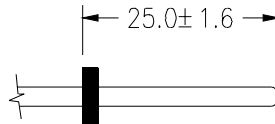
11.1.4 Ensure that the O-Ring is installed at the Engine end of the cable.

FIGURE 1.



11.1.5 Pull the Cable out and measure the distance from the engine end to the far side of the Ferrule.

FIGURE 2.



Replace the Cable Assembly if this is out of tolerance with Part No. 20-7100-05-01.

11.1.6 Reinstall the Cable Assembly at the Engine end. Just before doing this ensure that the instrument end of the drive Cable is sufficiently long enough to slide freely into the Tachometer and bottom out without running out of the square surface. This free play is very important.

11.1.7 With the Tach Cable re-installed at the Engine end, push inner cable towards the engine and the inner Cable should be flush with the swaged end  $\pm 1$ mm.

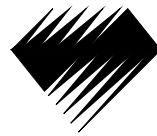
11.1.8 Pull the inner Cable and it should extend past the swaged end by  $16.0\text{mm} \pm 1\text{mm}$ .

11.1.9 If the above items are O.K., install an identification sleeve at the instrument end of the Cable. (See Figure 3).

11.1.10 **If the cable does not meet the inspection requirements, then replace the entire Cable Assembly with part No. 20-7100-05-01.**

11.1.11 Replace the Engine Cowling and the Instrument Panel Cover.

# SERVICE BULLETIN



# Diamond AIRCRAFT

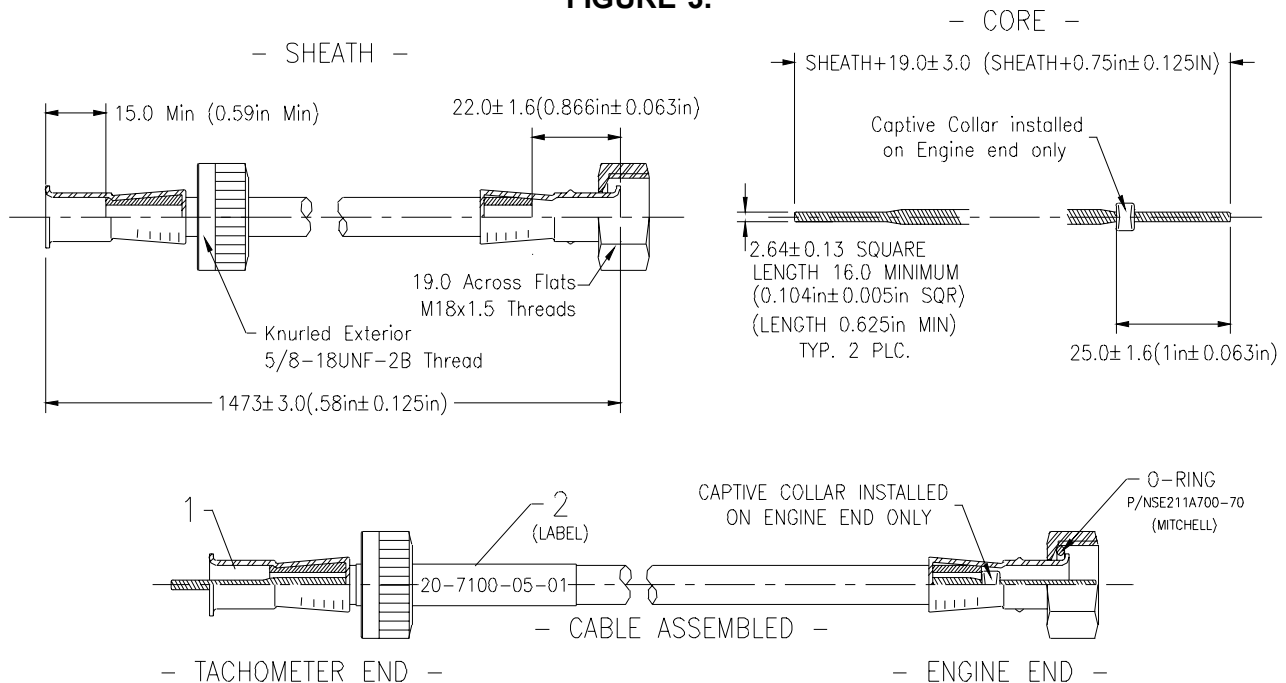
Service Bulletin No.: DA20-77-01, Rev. 0

Date Issued: July 30, 1996

Title: Tachometer, Cable Assembly, Inspection.

Page: 3 of 3

FIGURE 3.



Reference Drawing: 20-7100-05-01

12. Weight and Balance: Not Applicable.

13. Electrical Load Data: Not Affected.

14. Credit: Submit Warranty Application for Labor and/or Part credit if applicable.

14.1 Labor: 1 hour credit for Inspection and/or part replacement.

14.2 Part: If a new assembly is required, order P/N 20-7100-05-01 from Diamond Aircraft Customer Support and return a section of the old assembly including the engine attachment nut and the ferrule of the Drive Cable with a Warranty claim.

*To obtain satisfactory results, procedures specified in this service information letter must be accomplished in accordance with accepted methods and current government regulations. Diamond Aircraft Industries Inc. cannot be responsible for the quality of work performed in accomplishing the requirements of this service information letter.*

Diamond Aircraft Industries Inc. 1560 Crumlin Sideroad, London, Ontario, Canada N5V 1S2  
Phone: (519) 457-4041 Fax: (519) 457-4045

COPYRIGHT 1996