

SERVICE BULLETIN



Service Bulletin No.: DA20-31-02 Rev 1

Date Issued: 2 May, 2006

Title: Hourmeter, Engine Activated Installation

Page: 1 of 3

1. **ATA Code:** 3130

Planning Information:

2. **Effectivity:** All DA Katana's up to Serial Number 10190.

3. **General:** The existing Hourmeter is activated when electrical power is applied with the master switch. This new version is activated by the engine and cannot be switched off from the cockpit.

4. **Compliance:** Incorporation of this service bulletin may be accomplished at the operator's discretion.

5. **Approval:** Engineering data referenced or contained in this bulletin is Transport Canada approved.

6. **Labour:** Approximately 1 Man-hour will be required to accomplish this modification.

7. Material:	<u>Description:</u>	<u>Part Number:</u>	<u>Qty:</u>
	Hourmeter, Pigtail Assembly	20-2400-07-02	1
	Sockets	60617-1	2
	Connector Housing, plug	1-480318-0	1
	Connector Housing, receptacle	1-480319-0	1
	Fuse Holder	HHJ-A	1
	Pins	60618-1	2
	Fuse 1/16 AMP	27F650	1

8. **Kit Cost:** The above material may be ordered as Kit DA20-31-02MK. Contact Diamond Aircraft for price and availability.

9. **Special Tools:** #AMP Crimper 90123-2

10. **References:** DA20 Maintenance Manual, Document Number DA201

11. Accomplishment Instructions:

11.1 Fixed Provisions Installation

11.1.1 Remove (-) Battery Cable.

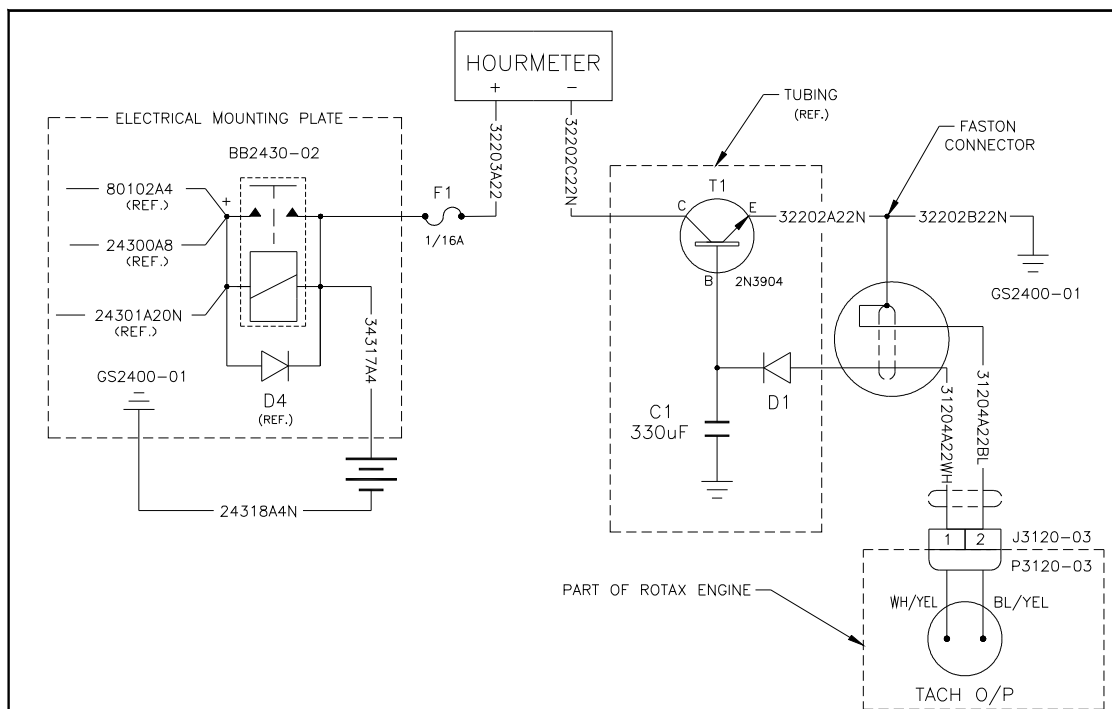
11.1.2 Remove Glare Shield.

11.1.3 Disconnect wire No. 32203A22 from Hobbs Meter and Fuel Pump C/B and discard.

- 11.1.4 Disconnect wire No.32202A22N from Hobbs and plug into wire No.32202B22N and wire No.31204A22sh Faston.
- 11.1.5 Ty-Rap assembly behind gauges.
- 11.1.6 Attach wire No. 32203C22N to the Hobbs (-) Terminal and the new 32203A22 to Hobbs (+) Terminal.
- 11.1.7 Route wire No.31204A22 and wire No.32203A22 through Grommet in Firewall ty-rap as required, route through center of larger gauge wires.
- 11.1.8 Solder the fuse holder cap to the end of wire No.32203A22. Insert the fuse and close the holder.
- 11.1.9 Connect Fuse Holder Ring Terminal To the Battery Terminal on the Battery Relay.
- 11.1.10 Cut wire No.31204A22 to length, label and install connector P/N 1-480319-0 and pins P/N60617-1.
- 11.1.11 Route existing Tach wires from back of engine, label, terminate with 1-480318-0 connector and P/N 60618-1 Sockets and attach to wire No.31204A22.
- 11.1.12 Ty-rap securely, install glare shield and attach Battery Terminal.

FIGURE 1

WIRE DIAGRAM



SERVICE BULLETIN



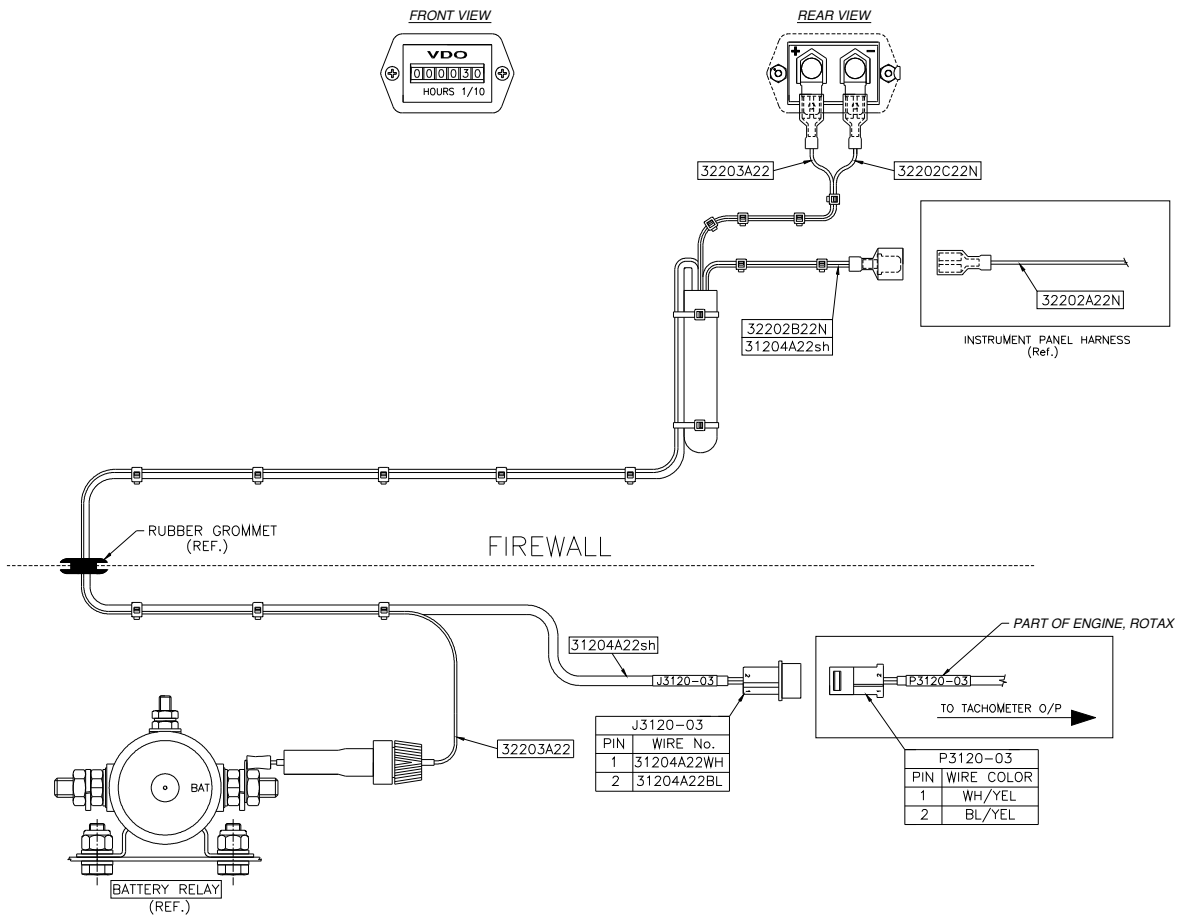
Service Bulletin No.: DA20-31-02 Rev 1

Date Issued: 2 May, 2006

Title: Hourmeter, Engine Activated Installation

Page: 3 of 3

FIGURE 2



12. Weight and Balance: Not Applicable.

13. Electrical Load Data: Not Affected.

14. Credit: None.

To obtain satisfactory results, procedures specified in this service bulletin must be accomplished in accordance with accepted methods and current government regulations. Diamond Aircraft Industries Inc. cannot be responsible for the quality of work performed in accomplishing the requirements of this service bulletin. Diamond Aircraft reserves the right to void continued warranty coverage in the area affected by this Service Bulletin if it is not incorporated.

Diamond Aircraft Industries Inc. 1560 Crumlin Sideroad, London, Ontario, Canada N5V 1S2
Phone: (519) 457-4041 Fax: (519) 457-4045

COPYRIGHT 2006