

# ALERT SERVICE BULLETIN



Service Bulletin No.: DA20-27-08A Rev 1

Date Issued: January 19, 2001

Title: Control Surface Hinge Inspection

Page: 1 of 3

## DIAMOND AIRCRAFT HIGHLY RECOMMENDS COMPLIANCE

1. **ATA Code:** 2700
2. **Effectivity:** DA20-A1 aircraft serial numbers 10002 through 100331 inclusive.
3. **General:**

Information gathered from in-service reports has highlighted the necessity for a special detailed inspection of the control surface hinges. Specifically the hinge brackets located on the aileron, flap and elevator control surfaces. It would be advantageous also to comply with Alert Service Bulletin DA20-27-06A during the compliance of this service bulletin if not already accomplished.

This ASB provides specific inspection instructions, which will be incorporated as a repetitive inspection into the maintenance manual for the DA20-A1 aircraft.
4. **Compliance:** Within 50 flight hours or at the next scheduled inspection which ever occurs first.
5. **Approval:** Engineering data referenced or contained in this Service Bulletin is approved as part of the type design.
6. **Labour:** Approximately 0.5 hours will be required to accomplish this service bulletin.

*This estimate is for direct labor performed by a technician and it does not include setup, planning, familiarization, cure time, part fabrication or tool acquisition.*
7. **Material:** No special materials will be required.
8. **Special Tools:** 10 x magnifying glass (or greater)
9. **References:** DA20 Maintenance Manual, Document Number DA201  
Alert Service Bulletin DA20-27-06A
10. **Accomplishment Instructions:**
  - 10.1 Refer to figure 1. Using a suitable flashlight and 10x magnifying glass, inspect all hinge components on the flap, aileron and elevator for cracks or visible signs of corrosion.

# ALERT SERVICE BULLETIN



Service Bulletin No.: DA20-27-08A Rev 1

Date Issued: January 19, 2001

Title: Control Surface Hinge Inspection

Page: 2 of 3

## Accomplishment Instructions continued:

### NOTE

If damaged components are found, replace parts prior to next flight.

**10.2** If no corrosion or cracks are found it is recommended that the hinge surface be protected. Use a small paintbrush and apply a polyurethane based paint to the hinge surfaces.

**10.3** Ensure the appropriate log book entry is made.

**11. Weight and Balance:** This Service Bulletin does not affect the weight and balance.

**12. Credit:**       **Labour Credit:** Not applicable.

**Replacement Part Credit:** Credit for the replacement parts will be issued upon return of the defective part with a completed warranty credit application, within 60 days from the issue date of this bulletin.

*To obtain satisfactory results, procedures specified in this service bulletin must be accomplished in accordance with accepted methods and current government regulations. Diamond Aircraft Industries Inc. cannot be responsible for the quality of work performed in accomplishing the requirements of this service bulletin. Diamond Aircraft reserves the right to void continued warranty coverage in the area affected by this Service Bulletin if it is not incorporated. If you no longer own the aircraft to which this service bulletin applies, please forward it to the current owner and send the name of the current owner to Diamond Aircraft Industries, Inc., at the address below*

Diamond Aircraft Industries Inc. 1560 Crumlin Sideroad, London, Ontario, Canada N5V 1S2  
Phone: (519) 457-4041 Fax: (519) 457-4045

COPYRIGHT 2000

# ALERT SERVICE BULLETIN



Service Bulletin No.: DA20-27-08A Rev 1

Date Issued: January 19, 2001

Title: Control Surface Hinge Inspection

Page: 3 of 3

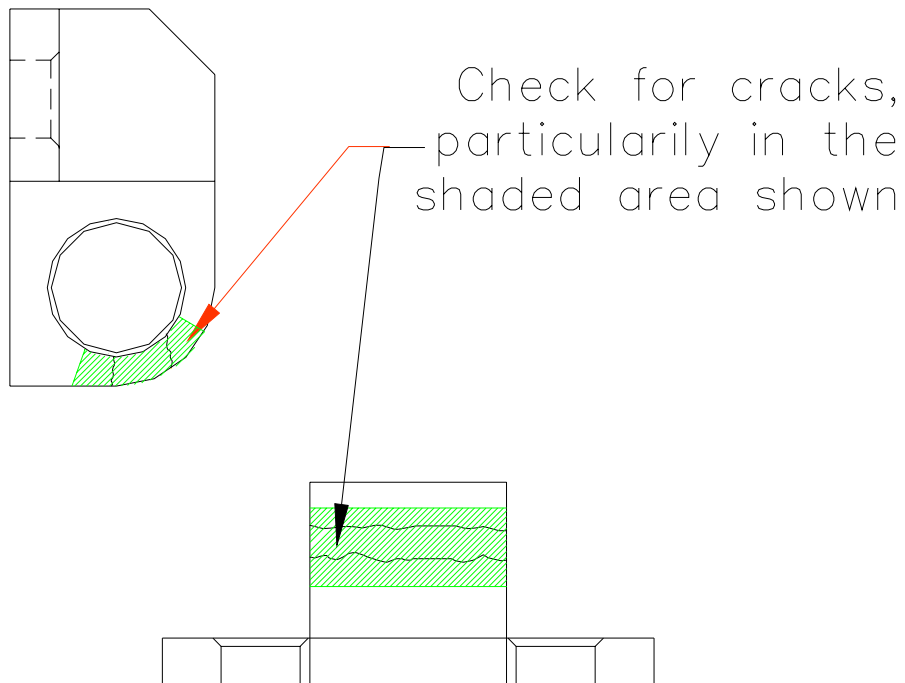
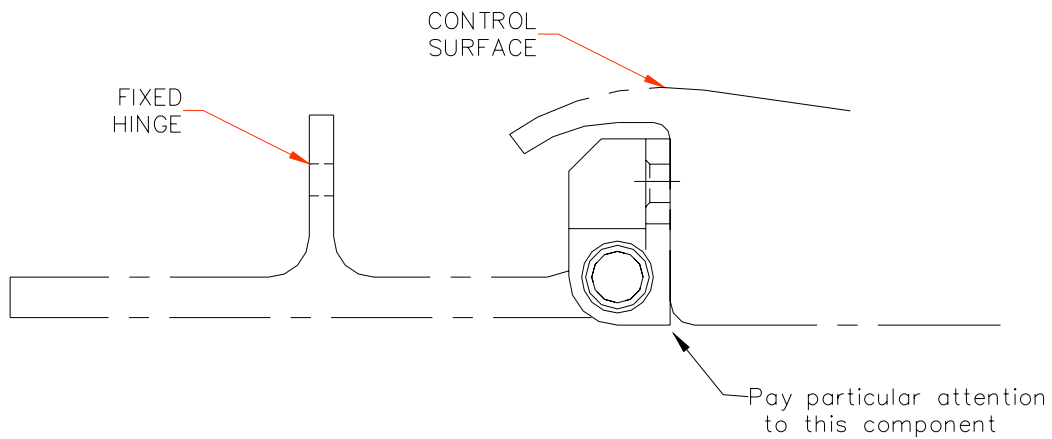


Figure 1